

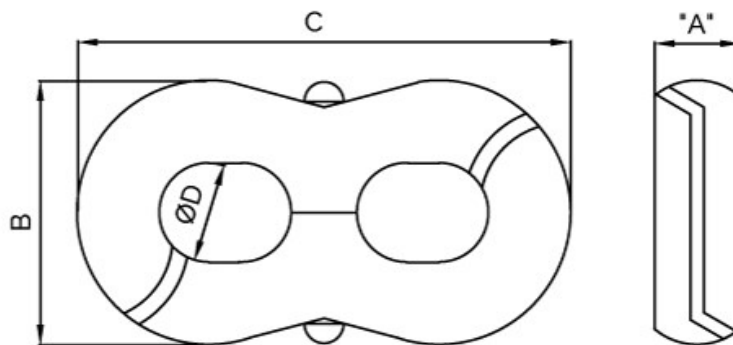
FIGURE OF 8 'SWING LINK' CONNECTOR



KEY FEATURES

- ✓ Easy to apply
- ✓ Strong Connection

The Figure of 8 Swing Link Connector is an easy-to-use high strength connector used to join together two cable socks.



Slingco Part No.	A (mm)	A (in)	B (mm)	B (in)	C (mm)	C (in)	Ø D (mm)	Ø D (in)	Approx. Break Load (kg)	Approx. Break Load (lb)
SWI4281	13	0.50	41	1.62	83	3.25	16	0.62	4,537	10,000
SWI4282	19	0.75	62	2.43	127	5.00	24	0.93	8,167	18,000

This information is for marketing purposes only. The details contained herein is presented as general information and no representation or warranty is expressly or impliedly given as to its accuracy, completeness or correctness. It does not constitute part of a legal offer or contract. For technical specifications, please contact Slingco Australia Pty. Ltd

Dimensions

The figures shown are indicative only. Fully dimensioned data-sheets are available on request. Nominal figures/actuals are as per data-sheet with tolerances of +/-10%. Please contact us if you have any questions.

Range dimension overlaps If the cable, rope or hose you have lies where ranges overlap, e.g. 1" when sizing is 0.5-1.00 and 1.00-1.5 we recommend that you select your cable grip to achieve break load first. If tensile strengths are equal or both adequate, choose the smaller of the two. Please contact us if you have any questions.



L9, 1 York Street, Sydney, NSW 2000, Australia Sales: +61 3 8840 6556

GET IN TOUCH

+61 3 8840 6556

sales@slingcoaustralia.com.au