

LINE PULLING SWIVEL - GALVANIZED

⚠ WARNING

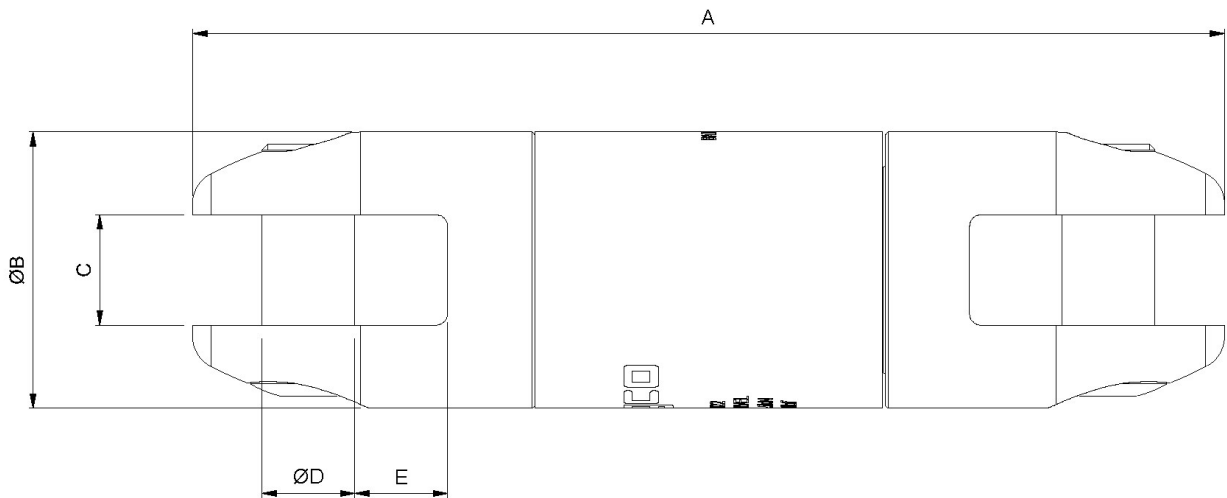
Cancer and Reproductive Harm: www.P65Warnings.ca.gov



KEY FEATURES

- ✓ releases torsion
- ✓ Prevents damage to cable or grip
- ✓ suitable for underground or overhead applications
- ✓ straight line pulling only

Slingco Line Swivels are designed to the highest specifications for underground and overhead pulling applications. All swivels are stringently quality tested and inspected to ensure optimum reliability and performance.



Slingco Part No.	Safe Working Load - 3:1 (lb)	Safe Working Load - 5:1 (lb)	A Length (in)	Ø B (in)	C (in)	Ø D Pin (in)	E Recess (in)	Weight (lb)
ZSW2649	4,000	2400	4.74	1.26	0.61	0.37	0.37	1.01
ZSW2929	8,000	4,800	5.38	1.5	0.63	0.61	0.43	1.75
ZSW6122	10,000	6,000	7	1.87	0.75	0.63	0.63	3.72
ZSW6123	16,000	9,600	10.2	2.44	1	1.12	0.87	9.19
ZSW2857	30,000	18,000	11.13	2.5	1	1.13	0.87	10.44



L9, 1 York Street, Sydney, NSW 2000, Australia Sales: +61 3 8840 6556

GET IN TOUCH

+61 3 8840 6556

sales@slingcoaustralia.com.au

LINE PULLING SWIVEL - GALVANIZED

Note

3:1 factor of safety and 5:1 factor of safety provided for reference only

Slingco Part No.	Safe Working Load - 3:1 (kN)	Safe Working Load - 5:1 (kN)	A Length (mm)	Ø B (mm)	C (mm)	Ø D Pin (mm)	E Recess (mm)	Weight (kg)
ZSW2649	17.8	10.6	120.5	32	15.5	13.3	9.5	0.46
ZSW2929	35.5	21.3	136.6	38	16	15.5	11	0.80
ZSW6122	44.5	26.7	178	47.6	19.05	16	16	1.69
ZSW6123	71.2	42.7	259	62	25.4	28.5	22	4.17
ZSW2857	134	80	282.6	63.5	25.4	28.62	22	4.74

Note

3:1 factor of safety and 5:1 factor of safety provided for reference only

Flexible Eye MU	Revolving Eye	Approx. breaking strength of cable sock (lb)	Approx. breaking strength of cable sock (kN)	Cable sock colour code	Size range O.D. (in)	Size range O.D. (mm)	Recommended swivel	Safe working load of swivel at 3:1 (lb)	Safe working load of swivel at 3:1 (kN)
ZCS1710	ZCS2177	7,000	31.1	Dark green	0.25 - 0.50	06-Dec	ZSW2649	4,000	17.8
ZCS1711	ZCS2178	10,500	46.7	Brown	0.50 - 0.75	Dec-19	ZSW2929	5,000	22.2
ZCS1712	ZCS2179	14,100	62.7	Light blue	0.75 - 1.00	19 - 25	ZSW2929	5,000	22.2
ZCS1713	ZCS2180	25,000	111.2	Gold	1.00 - 1.25	25 - 32	ZSW6122	10,000	44.5
ZCS1714	ZCS2181	31,000	137.9	Black	1.25 - 1.50	32 - 38	ZSW6122	10,000	44.5
ZCS1715	ZCS2182	31,000	137.9	Red	1.50 - 1.75	38 - 44	ZSW6122	10,000	44.5
ZCS1716†	ZCS2183*	43,000*-49,000†	191.3 - 218	Dark blue	1.75 - 2.25	44 - 57	ZSW6123	16,000	71.2

Note

The above is intended as a rough guide. The recommended working load should be determined by the competent person(s) using the cable grip and/or Slingco swivel.

This information is for marketing purposes only. The details contained herein is presented as general information and no representation or warranty is expressly or impliedly given as to its accuracy, completeness or correctness. It does not constitute part of a legal offer or contract. For technical specifications, please contact Slingco Australia Pty. Ltd

Dimensions

The figures shown are indicative only. Fully dimensioned data-sheets are available on request. Nominal figures/actuals are as per data-sheet with tolerances of +/- 10%. Please contact us if you have any questions.

Range dimension overlaps If the cable, rope or hose you have lies where ranges overlap, e.g. 1" when sizing is 0.5-1.00 and 1.00-1.5 we recommend that you select your cable grip to achieve break load first. If tensile strengths are equal or both adequate, choose the smaller of the two. Please contact us if you have any questions.



L9, 1 York Street, Sydney, NSW 2000, Australia Sales: +61 3 8840 6556

GET IN TOUCH



+61 3 8840 6556



sales@slingcoaustralia.com.au