

LINE PULLING SWIVEL - BRIGHT ZINC PLATED STEEL

⚠ WARNING

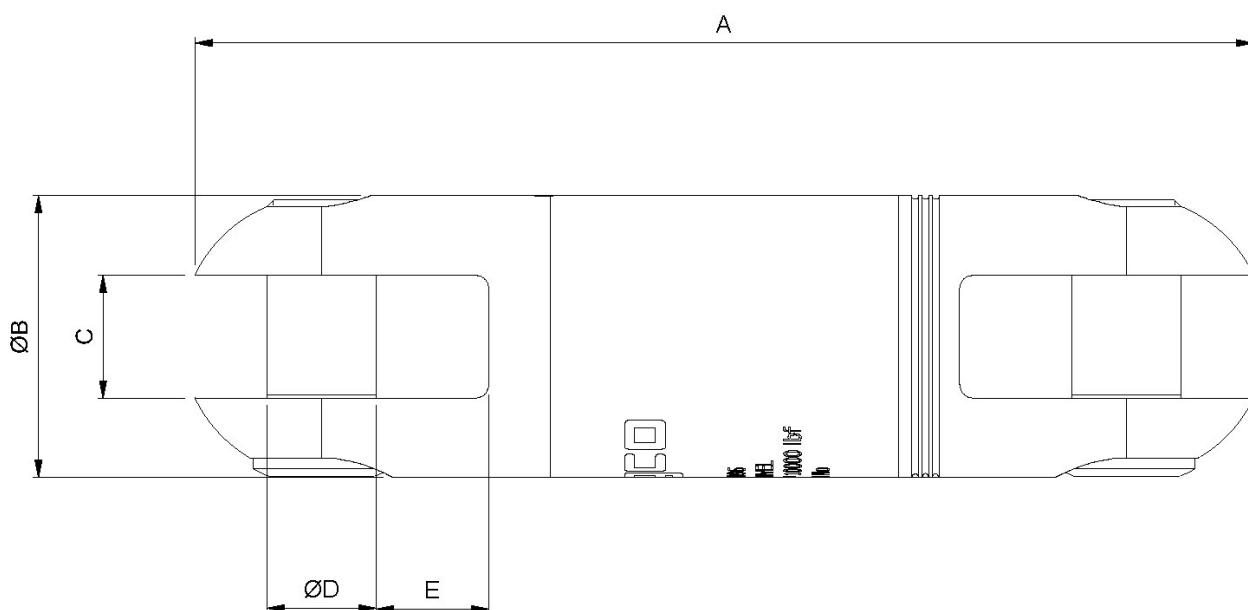
Cancer and Reproductive Harm: www.P65Warnings.ca.gov



KEY FEATURES

- ✓ Releases torsion
- ✓ Prevents damage to cable or grip
- ✓ Suitable for underground or overhead applications
- ✓ Straight line pulling only

Swivels designed for use in stringing high tension wires for electrical transmission and distribution. Swivels are important in pulling when the lines develop torsion during installation. Swivels will release torque and prevent it from reaching dangerous levels, which can cause damage to the cable. All swivels are stringently quality tested and inspected to ensure optimum performance and reliability.



L9, 1 York Street, Sydney, NSW 2000, Australia Sales: +61 3 8840 6556

GET IN TOUCH

+61 3 8840 6556

sales@slingcoaustralia.com.au

LINE PULLING SWIVEL - BRIGHT ZINC PLATED STEEL

Slingco Part No.	Safe Working Load - 3:1 FOS (lb)	Safe Working Load - 5:1 FOS (lb)	A Length (in)	Ø B (in)	C (in)	Ø D Pin (in)	E Recess (in)	Weight (lb)
ZSW2091	2,250	1,350	3.39	0.87	0.39	0.31	0.39	0.43
ZSW2092	3,500	2,100	3.98	0.98	0.43	0.39	0.43	0.56
ZSW2093	5,000	3,000	4.96	1.26	0.55	0.39	0.55	1.13
ZSW2094	7,000	4,200	5.22	1.38	0.55	0.5	0.54	1.44
ZSW2096	10,000	6,000	6.1	1.62	0.71	0.63	0.65	2.35
ZSW2097	15,000	9,000	7.34	2.09	0.79	0.71	0.83	4.59

Note

3:1 factor of safety and 5:1 factor of safety provided for reference only

Slingco Part No.	Safe Working Load - 3:1 (kN)	Safe Working Load - 5:1 (kN)	A Length (mm)	Ø B (mm)	C (mm)	Ø D Pin (mm)	E Recess (mm)	Weight (kg)
ZSW2091	10	6	85.6	22	10	8	10	0.19
ZSW2092	15.5	9.3	101.1	25	11	10	11	0.25
ZSW2093	22	13.2	126	32	14	10	14	0.51
ZSW2094	31.1	18.7	132.7	35	14	12.5	13.8	0.65
ZSW2096	44.5	26.7	155.1	41.25	18	16	16.5	1.07
ZSW2097	66	39.6	186.4	53	20	18	21	2.08

Note

3:1 factor of safety used, based on the ultimate load for underground use

5:1 factor of safety used, based on the ultimate load for overhead use

Flexible Eye MU	Revolving Eye	Approx. breaking strength of cable sock (lb)	Approx. breaking strength of cable sock (kN)	Cable sock colour code	Size range O.D. (in)	Size range O.D. (mm)	Recommended swivel	Safe working load of swivel at 3:1 (lb)	Safe working load of swivel at 3:1 (kN)
ZCS1710	ZCS2177	7,000	31.1	Dark green	0.25 - 0.50	6 - 12	ZSW2092	3,500	15.6
ZCS1711	ZCS2178	10,500	46.7	Brown	0.50 - 0.75	12 - 19	ZSW2093	5,000	22.2
ZCS1712	ZCS2179	14,100	62.7	Light blue	0.75 - 1.00	19 - 25	ZSW2093	5,000	22.2
ZCS1713	ZCS2180	25,000	111.2	Gold	1.00 - 1.25	25 - 32	ZSW2096	10,000	44.5
ZCS1714	ZCS2181	31,000	137.9	Black	1.25 - 1.50	32 - 38	ZSW2096	10,000	44.5
ZCS1715	ZCS2182	31,000	137.9	Red	1.50 - 1.75	38 - 44	ZSW2096	10,000	44.5
ZCS1716†	ZCS2183*	43,000-49,000	191.3 - 218	Dark blue	1.75 - 2.25	44 - 57	ZSW2097	15,000	66.7

This information is for marketing purposes only. The details contained herein is presented as general information and no representation or warranty is expressly or impliedly given as to its accuracy, completeness or correctness. It does not constitute part of a legal offer or contract. For technical specifications, please contact Slingco Australia Pty. Ltd

Dimensions

The figures shown are indicative only. Fully dimensioned data-sheets are available on request. Nominal figures/actuals are as per data-sheet with tolerances of +/- 10%. Please contact us if you have any questions.

Range dimension overlaps If the cable, rope or hose you have lies where ranges overlap, e.g. 1" when sizing is 0.5-1.00 and 1.00-1.5 we recommend that you select your cable grip to achieve break load first. If tensile strengths are equal or both adequate, choose the smaller of the two. Please contact us if you have any questions.



L9, 1 York Street, Sydney, NSW 2000, Australia Sales: +61 3 8840 6556

GET IN TOUCH



+61 3 8840 6556



sales@slingcoaustralia.com.au