

DIRECTIONAL DRILLING SWIVEL

⚠ WARNING

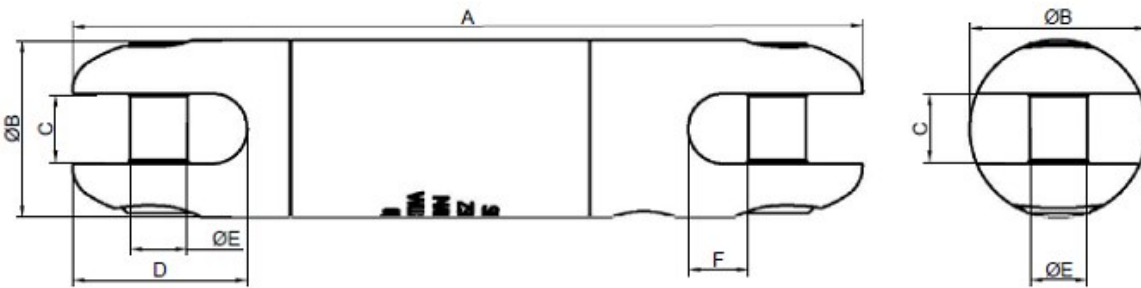
Cancer and Reproductive Harm: www.P65Warnings.ca.gov



KEY FEATURES

- ✓ Use to counter rotational forces caused by boring
- ✓ Designed for horizontal directional drilling
- ✓ Able to grease between uses to remove dirt and contaminants
- ✓ Made of carbon steel and zinc passivated for durability

Slingco Directional Drilling Swivels are designed for horizontal directional drilling or underground cable installation only. Use to counter rotational forces caused by boring. They are able to be greased for removal of dirt and contaminants.



Safe Working Load 3:1 (lb)	Safe Working Load 3:1 (kN)	A (in)	A (mm)	Ø B (in)	Ø B (mm)	C (in)	C (mm)	D (in)	D (mm)	Ø E (in)	Ø E (mm)	F (in)	F (mm)	Slingco Part No.
8,500	37.8	7.24	183.8	1.62	41.2	0.63	16.0	1.60	40.6	0.53	13.4	0.55	13.9	ZSW11133
10,000	44.4	8.32	211.3	2.00	50.8	0.75	19.0	1.79	45.0	0.59	14.9	0.75	19.0	ZSW11134

This information is for marketing purposes only. The details contained herein is presented as general information and no representation or warranty is expressly or impliedly given as to its accuracy, completeness or correctness. It does not constitute part of a legal offer or contract. For technical specifications, please contact Slingco Australia Pty. Ltd

Dimensions

The figures shown are indicative only. Fully dimensioned data-sheets are available on request. Nominal figures/actuals are as per data-sheet with tolerances of +/- 10%. Please contact us if you have any questions.

Range dimension overlaps If the cable, rope or hose you have lies where ranges overlap, e.g. 1" when sizing is 0.5-1.00 and 1.00-1.5 we recommend that you select your cable grip to achieve break load first. If tensile strengths are equal or both adequate, choose the smaller of the two. Please contact us if you have any questions.



L9, 1 York Street, Sydney, NSW 2000, Australia Sales: +61 3 8840 6556

GET IN TOUCH

+61 3 8840 6556

sales@slingcoaustralia.com.au