

POLE BAND SYSTEM

⚠ WARNING

Cancer and Reproductive Harm: www.P65Warnings.ca.gov



KEY FEATURES

- ✓ Aluminum hardware is high strength and high resistance to corrosion
- ✓ Mounting plates with 2" or 3" carriage bolt
- ✓ 3/4" or 1-1/4" Stainless Steel Pre-Cut Banding
- ✓ Rolls of banding available for field cuts to length

The Slingco Pole Band System includes bolt clamps and mounting plates and 3/4" or 1-1/4" banding. Packages with different band lengths make this system flexible for varying pole sizes.

Measure the circumference of the pole and add a minimum of 6" and select the next size up. Securely mount hardware to cylindrical or square wooden, metal or concrete poles.

The system includes aluminum hardware extrusions, bolt hardware and pre-cut lengths of stainless steel banding. The system is easy to attach and tighten onto poles. A banding tool like the Slingco CPC8748 or CPC8780 may be used to tighten straps. The optional mounting plates allow quick attachment of hardware.

Extrusions and mounting plates available separately for use with rolls of banding cut to length in the field.



L9, 1 York Street, Sydney, NSW 2000, Australia Sales: +61 3 8840 6556

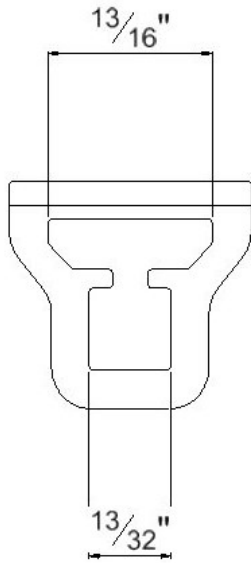
GET IN TOUCH

+61 3 8840 6556

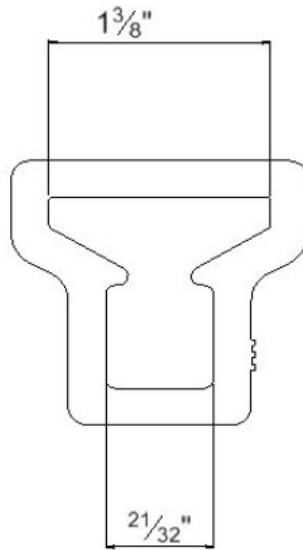
sales@slingcoaustralia.com.au

POLE BAND SYSTEM

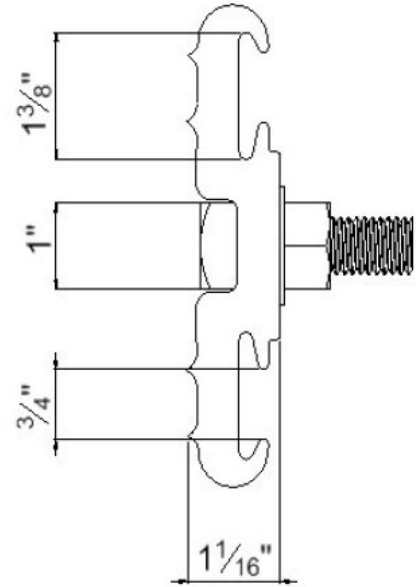
ZPC10646



ZPC 10647



ZPC 10648



Pre-Assembled Extrusions and Banding

Slingco Part No.	Description	Pack Quantity	Pre-Cut Band Length (in)	Band Width (in)
ZPC10646-48	Two extrusions and pre-cut band	12	48	3/4
ZPC10646-72	Two extrusions and pre-cut band	12	72	3/4
ZPC10647-48	Two extrusions and pre-cut band	12	48	1-1/4
ZPC10647-72	Two extrusions and pre-cut band	12	72	1-1/4

Bolt clamps and Mounting Plates

Slingco Part No.	Description	Pack Quantity	Pre-Cut Band Length (in)	Band Width (in)
ZPC10646	3/4" Bolt Clamp	12	N/A	3/4
ZPC10647	1-1/4" Bolt Clamp	12	N/A	1-1/4
ZPC10648	Mounting Plate with 2" Bolt	12	N/A	3/4 or 1-1/4
ZPC10910	Mounting Plate with 3" Bolt	12	N/A	3/4 or 1-1/4

Banding (100 ft rolls)

Slingco Part No.	Description	Pack Quantity	Pre-Cut Band Length (in)	Band Width (in)
CPC8743	201 SS banding	100 Ft in BOX		3/4"
CPC8744	201 SS banding	100 Ft in PLASTIC TOTE		3/4"
CPC8745	201 SS banding	100 Ft in BOX		1 1/4"

Slingco Part No.	Description	Pack Quantity	Pre-Cut Band Length (mm)	Band Width (mm)
ZPC10646-48	Two extrusions, bolt and pre-cut band	12	1,219	19
ZPC10646-72	Two extrusions, bolt and pre-cut band	12	1,829	19
ZPC10647-48	Two extrusions, bolt and pre-cut band	12	1,219	31.75
ZPC10647-72	Two extrusions, bolt and pre-cut band	12	1,829	31.75

This information is for marketing purposes only. The details contained herein is presented as general information and no representation or warranty is expressly or impliedly given as to its accuracy, completeness or correctness. It does not constitute part of a legal offer or contract. For technical specifications, please contact Slingco Australia Pty. Ltd



L9, 1 York Street, Sydney, NSW 2000, Australia Sales: +61 3 8840 6556

GET IN TOUCH



+61 3 8840 6556



sales@slingcoaustralia.com.au

POLE BAND SYSTEM

Dimensions

The figures shown are indicative only. Fully dimensioned data-sheets are available on request. Nominal figures/actuals are as per data-sheet with tolerances of +/-10%. Please contact us if you have any questions.

Range dimension overlaps If the cable, rope or hose you have lies where ranges overlap, e.g. 1" when sizing is 0.5-1.00 and 1.00-1.5 we recommend that you select your cable grip to achieve break load first. If tensile strengths are equal or both adequate, choose the smaller of the two. Please contact us if you have any questions.



L9, 1 York Street, Sydney, NSW 2000, Australia Sales: +61 3 8840 6556

GET IN TOUCH



+61 3 8840 6556



sales@slingcoaustralia.com.au