

slingco®



MECHANICAL CRIMPING TOOLS SAFE OPERATION AND MAINTENANCE INSTRUCTIONS

SLINGCO PART NOS. TCR7002, TCR7004 & TCR8735

⚠ ATTENTION

READ and **UNDERSTAND** all of the instructions and safety information in this manual before operating or servicing this tool.

Failure to read and understand these warnings and safe handling instructions could result in severe personal injury or death.

KEEP THIS MANUAL WITH TOOL.

Thank you for using Slingco® products. This manual must be read and understood prior to operating this product. Special attention should be paid to the section '**Safety Information**'.

This manual should be kept available to all operating and maintenance personnel.

Additional or replacement manuals may be obtained at no charge by contacting your local Slingco office.

CONTENTS

SPECIFICATIONS & OPERATION	4
INSPECTION & ADJUSTMENT	5
SAFETY INFORMATION	6
PARTS GUIDE	7

AVAILABLE TOOL TYPES

#TCR7002 - O & D

#TCR7004 - BG & D

#TCR08735 - 5/8 Kearney

SPECIFICATIONS & OPERATION

SPECIFICATIONS

- Crimp Force Developed: 9,000 lb
- Length: 25 3/4"
- Weight: 7 lb

FOR USE ON:

- Copper taps from #10 solid to #2/0 stranded.
- Aluminum/ACSR taps from #14 solid to #4/0 ACSR.
- Stirrups from #6 AWG to #4/0 ACSR.
- Copper and aluminum code conductor connectors from #6 AWG to #4/0 stranded.
- Overhead full tension deadend, full and non-tension splices, and terminals from #10 stranded to #4/0 ACSR.

OPERATION

1. This tool may be used without dies. However, if dies are needed, select the proper dies for the connector to be crimped.
2. Install dies in jaws making certain that they are properly secured by the springloaded, positive lock, die buttons (Parts Ref. 3, 4, and 5 on page 7 of this manual).

IMPORTANT

To help minimize hand and arm fatigue, and perceived handle force during use, hold the crimping tool with your hands at the end of the handles..

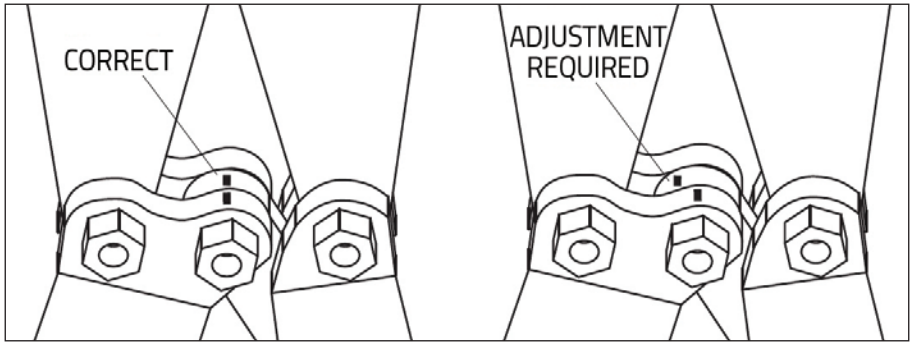
3. Insert conductor into the connector and align the tool and die on the connector. Start in the center for splices and 'H' frames, and on the end, nearest the pad, for terminals.
4. Operate the tool by closing. Normally a 'pop' will be heard as the tool goes over center after the crimp is made.
5. Continue crimping the connector until the correct number of crimps have been completed. Work from the center to the outer edges for splices and 'H' frame connectors, alternating sides if possible, for the best compression connection.
6. Reposition tool for next crimp. Unless non-bowing dies are used, it is recommended that the tool be rotated 90° for each adjacent crimp of large splice connections.

INSPECTION & ADJUSTMENT

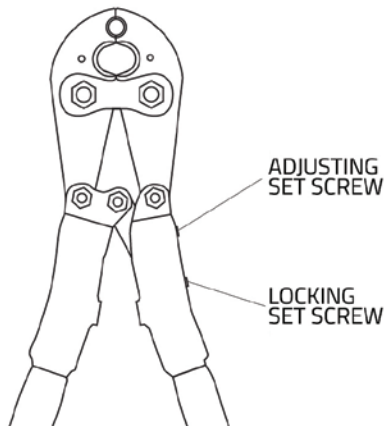
INSPECTION & ADJUSTMENT

Check tools regularly for correct adjustment. As with any tool, a slight amount of wear may occur over time. Wear may be corrected by readjusting the tool as follows:

1. Remove any die inserts from the tool and make sure the jaw tips are free of dirt and debris.
2. Open tool and close handles until the jaw tips just touch.
DO NOT CLOSE HANDLES COMPLETELY!
3. Check that the index marks on the toggle link and frame line up.



4. If the marks line up, the tool is in proper adjustment.
5. If the marks do not line up, loosen the locking set screw using a 1/4" (6.4 mm) hex key, and then turn the adjustment screw clockwise or counterclockwise until the marks line up.
6. Tighten the locking set screw securely; the tool is now properly adjusted and ready for use.



SAFETY INFORMATION

ATTENTION



DO NOT perform any service or maintenance on this tool other than described in this manual.

Read and follow the operator's manual before using tool.

WARNING



This tool is intended for two-handed operation. Maintain a firm grip at the base of both handles when using this tool.

Use proper connector and cable combinations. Improper combinations can result in an incomplete crimp.



Only crimp terminals and sleeves that fit the tool specifications. **DO NOT** attempt to crimp oversized fittings.

Inspect tool before use. If any parts are worn or damaged, send the tool to an authorized Slingco Service center.

DO NOT exceed the rated capacity of this tool.

Failure to observe these precautions may result in injury or property damage.

WARNING PINCH POINT HAZARD



- Keep hands away from closing dies.
- Serious injury may occur.

WARNING ELECTRICAL SHOCK HAZARD



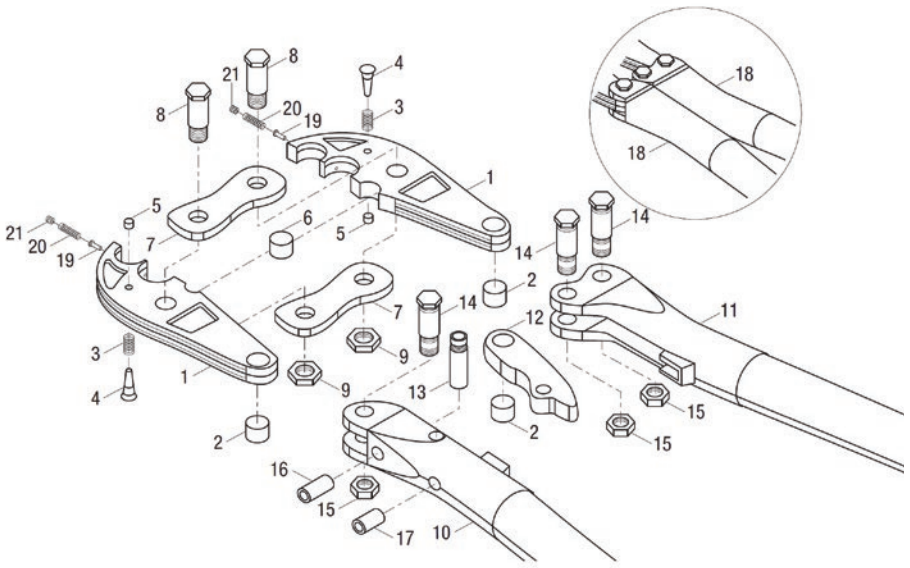
- This tool is **NOT** insulated. **DO NOT USE** on live circuits.
- Failure to observe this warning could result in severe injury or death.

WARNING FLYING OBJECTS HAZARD



- Do not operate without eye protection
- Failure to wear eye protection could result in serious eye injury from flying debris.

PARTS GUIDE



Part reference	Description	Quantity
1	Jaw	2
2	Bushing, oil free	3
3	Spring	2
4	Pin, push	2
5	Nut	2
6	Spindle	1
7	Link	2
8	Bolt, shoulder	2
9	Nut	2
10	Head, handle (A)	1
11	Head, handle (B)	1
12	Toggle	1
13	Pin, drive	1
14	Bolt, shoulder	3
15	Nut	3
16	Screw 1	1
17	Screw 2	1
18	Tube, shrinkage	2
19	Pin, die retaining	2
20	Spring	2
21	Screw, set	2

ATTENTION

READ and **UNDERSTAND** all of the instructions and safety information in this manual before operating or servicing this tool.

Failure to read and understand these warnings and safe handling instructions could result in severe personal injury or death.

KEEP THIS MANUAL WITH TOOL.

WARNING

Cancer and Reproductive Harm www.P65Warnings.ca.gov



Slingco America, Inc.
3100 Jonquil Drive SE, Smyrna,
Georgia, 30080, USA
TOLL FREE: 888 685 9478
sales@slingcoamerica.com

888-685-9478

Slingco Limited
Gateway Business Park,
New Hall Hey Road,
Rawtenstall, BB4 6JG, England
Tel: +44 [0]1706 855558
sales@slingco.com

+44 [0]1706 855558

Slingco Australia Pty. Ltd.
L9, 1 York Street, Sydney,
NSW 2000, Australia
Tel: +61 3 8840 6556
sales@slingcoaustralia.com.au

+61 3 8840 6556

slingco.com

Mechanical Crimper Operation and Safety Guide: MAN13555 - Rve 003 Date July 2025

Slingco makes no warranty, express or implied, with respect to this product nor with respect to its specifications. In no event shall Slingco be liable for any direct, indirect, punitive, incidental, special consequential damages to property or life, whatsoever, arising out of or connected with the use or misuse of this product. This product is intended for use by qualified professionals having adequate knowledge of its proper use. July 2025 - v1.6