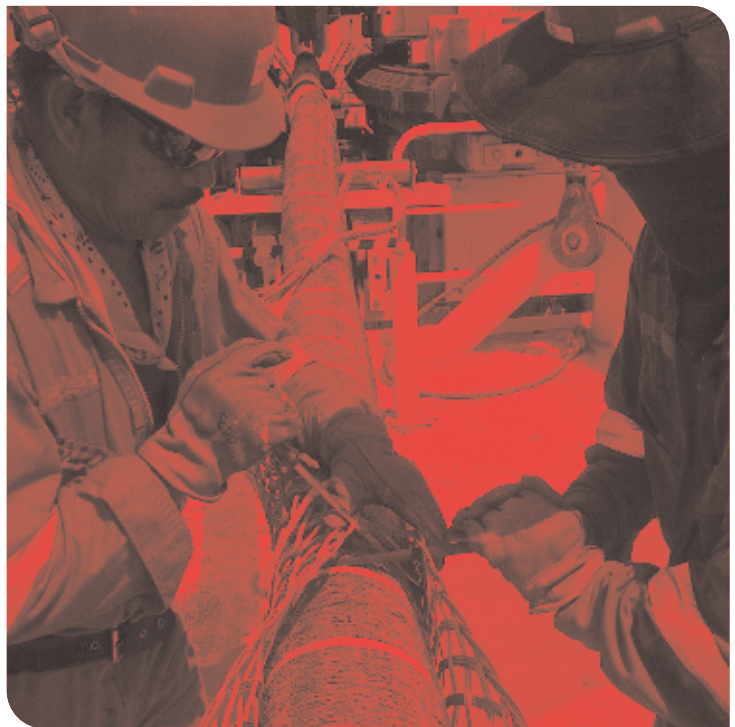




**CABLE INSTALLATION
AND SUPPORT
MADE A WHOLE
LOT EASIER**



CABLE PULLING · CABLE SUPPORT · CABLE CONTROL & GUIDANCE · TOOLS & ACCESSORIES

A GLOBAL BUSINESS BUILT ON
QUALITY, INNOVATION, SERVICE
...AND REAL FAMILY TIES



Welcome to Slingco, a world-leading supplier of cable grips and wire rope. Founded by our father, Chris Dykins, more than 40 years ago, Slingco remains a family-owned business but has evolved into an expert design and manufacturing operation, producing high quality cable grips, wire rope assemblies and more - products that are renowned for high performance in quality-critical applications.

Slingco operates out of regional bases in the UK and USA, but you'll find our products around the world, making heavy-duty cable and conductor installation and support a whole lot easier for people working in industries as varied as oil and gas, marine and offshore, public utilities, civil engineering, aerospace, transport, the military, performing arts, vehicle building, construction and more.

You can't make mistakes when you're dealing with products like ours. Too much depends on them. That's why we're obsessive about quality and innovation in design and manufacturing, and why nothing leaves our hands that isn't 100% dependable.

Because we understand exactly what your operation needs, we also know cost is a factor. We keep our prices realistic and hold a vast range of stock for fast - even same day - delivery.

We're brothers, partners and the driving force behind Slingco, but we're only a small part of the whole picture. We've got a fantastic team of skilled people who share our obsession with quality and great service. We're proud of every one of them.

Together, we're going to carry on developing outstanding products. We're going to carry on getting them out to you in record time. And we're going to carry on being the sort of company it's a pleasure to deal with.

NICK DYKINS
CEO, SLINGCO LIMITED

MATT DYKINS
PRESIDENT, SLINGCO AMERICA

 **WARNING**

Cancer and Reproductive Harm
www.P65Warnings.ca.gov

CABLE PULLING

A Type - High Strength Cable Grip	4
Feed Tube	4
MU Type - High Strength Cable Grip	4
HD Type - Heavy Duty Pulling Grips (colour coded)	5
HD Type - Heavy Duty Pulling Grips (non colour coded)	5
MD Type - Medium Duty Pulling Grip	5
LD Type - Light Duty Pulling Grip	5
DE Type - Double Eye Grip	6
OS Type - Offset Eye Grip	6
LU Type - Lace Up Grip	7
ST Type - Single Eye Double Weave Grip	7
Flexible & Thimble Eye Grip - Single Eye	8
Flexible & Thimble Eye Grip - Double Eye	8
Junior Type Cable Grip (Light Duty)	8
SE Type - Single Eye Grip	9
Single Eye Double Weave Pulling Grip	9
R Type - Rotating Multi-Weave Grip	10
RT Type - Rotating Eye Double Weave Grip	10
Reinforced Eye Underground Grips	11
Splicing Grip - Rotating Swivel Link	12
Splicing Grip - Rotating Barrel	12
Tri & Quad Pulling Sling	12
Open Ended Grip	13
Fibre Optic Cable Grip	13
NS Type - Single Eye Aramid Cable Grip	14
ND Type - Double Eye Aramid Cable Grip	15
NO Type - Offset Eye Aramid Cable Grip	15
Sub-Sea and Marine Grips	16

CABLE SUPPORT

Wind Turbine Cable Grip - Heavy Duty Thimble Offset Eye	17
Extended Thimble Eye Heavy Duty Stainless Steel Cable Grip	17
Single Eye Closed Mesh Cable Support Grip	18
Single Eye Split Mesh Lace Closing Support Grip	18
Single Eye Split Mesh Rod Closing Cable Support Grip	18
Double Eye Closed Mesh Cable Support Grip	19
Double Eye Split Mesh Lace Closing Support Grip	19
Double Eye Split Mesh Rod Closing Cable Support Grip	19
Offset Eye Closed Mesh Cable Support Grip	20
Offset Eye Split Mesh Lace Closing Support Grip	20
Offset Eye Split Mesh Rod Closing Cable Support Grip	20
Universal Eye Closed Mesh Cable Support Grip	21
Universal Eye Split Mesh Lace Closing Support Grip	21
Universal Eye Split Mesh Rod Closing Cable Support Grip	21
Bus Drop Grips	22
Service Drop Grips	22
Springs	22
Heavy Duty Support Grips - Single Eye	23
Heavy Duty Support Grips - Double Eye	23
Heavy Duty Support Grips - Single Eye Lace-Up	23
Heavy Duty Support Grips - Double Eye Lace-Up	23
Heavy Duty Support Grips - Single Eye Rod Closing	23
Heavy Duty Support Grips - Double Eye Rod Closing	23
Deluxe Cord Grips	24-25

CABLE SUPPORT (continued)

Dust-Tight Cord Grips	25
I-Grips	25
Conduit Riser Cable Grip - Stainless Steel	26
Heavy Duty Hose Restraint Grips / Whipsnocks	27
Hose Whip Restraint	27

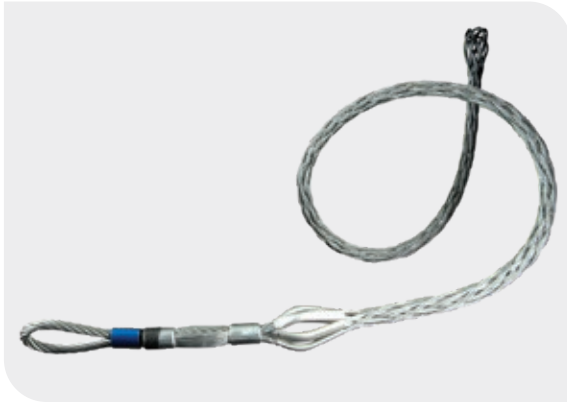
TOOLS & ACCESSORIES

Anti Rotational Device	28
Line Pulling Swivels	29
Directional Drilling Swivels	30
Bridge Type Cable Laying Roller	30
Edge Mount Manhole Lead-In Cable Roller (Heavy Duty)	30
Edge Mount Manhole Lead-In Cable Roller (Light Duty)	31
Heavy Duty 214mm Straight Line Cable Roller	31
Heavy Duty Triple Corner Cable Roller	31
Cable Drum Rotator	32
C Connectors	32
Connectors: 90°, Rope To Rope, Rope To Swivel	32
Pole Band System	33
Pole Staples	33
Banding Tools, Buckles And Bands	34-35
60 Ton Hydraulic Crimping Tool	36
100 Ton Hydraulic Crimping Tool	37
12 Ton Wh2/Wh3 Kearney Type Dies	38
Mechanical Crimping Tools	38
Reel Lifter	39
Hand Line Tools	39
Rubber Blanket Clamp Pin	40
35Kv Jumper Clamp	40
Pole Stand	40
Pole Puller	41
Dirt Tarps	41
Ratchet Cutters (ACSR)	42
Stay Wire Dispenser	42
Triplex Dispenser	42
Pole Line Suspension Clamps	43
10K Drive Wrench Assembly	44-45
Hex Kelly Bar Adapters	45
Drive Wrench Lock Assembly	45
Drive Wrenches	45
Catchblock OHL Catenary Roller	46
Conductor Replacement Roller	46
Green Pin Standard Bow Shackles G-4161	47
Green Pin Standard Bow Shackles G-4163	47
Green Pin Standard Dee Shackles G-4151	48
Green Pin Standard Dee Shackles G-4153	48

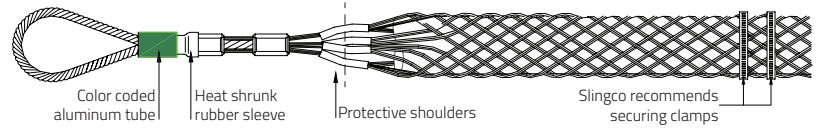
IMPORTANT TECHNICAL INFORMATION

Cable Pulling Grips and Cable Support Grips	49
Single and Double Eye Cable Grip Instructions	50
Lace Up Cable Grip Instructions	51

A TYPE - HIGH STRENGTH CABLE GRIP



The strongest grip we produce; can be used for metal wire and synthetic rope pulls. Perfect for overhead transmission and distribution line pulling or any applications with heavy load ratings, e.g. gas, electric railroad, rigging lines and construction pulls. When pulling synthetic rope use a Slingco Feed Tube (see below) to make rope insertion a breeze. To avoid the effects of torsion a line pulling swivel that rotates under load should be used. Galvanised Steel and colour coded for ease of identification.



Slingco Part No.	Colour Code	Rope Diameter		Conductor Diameter		Overall Length		Lattice Length		Approx. Break Load	
		in	mm	in	mm	in	mm	in	mm	lb	kg
ZCS1799	Black	0.25 - 0.65	6 - 16	0.19 - 0.40	5 - 10	38	965	28	710	7,000	3,180
ZCS3020	Purple	0.30 - 0.40	7.5 - 10	0.25 - 0.40	6 - 10	42	1,067	30	760	10,000	4,530
ZCS1800	Dark Green	0.50 - 0.90	13 - 23	0.38 - 0.63	9.7 - 16	51	1,300	37	940	14,000	6,360
ZCS3522	Grey	0.44 - 0.90	11 - 23	0.44 - 0.63	11 - 16	110	2,800	97	2,470	20,000	9,072
ZCS1801	Red	0.75 - 1.10	19 - 28	0.63 - 0.88	16 - 22	74	1,880	58	1,473	20,000	9,072
ZCS5543	Brown			0.75 - 1.10	19 - 28	81	2,060	62	1,579	30,700	13,925
ZCS1802	Blue	1.00 - 1.50	25 - 38	0.88 - 1.13	22 - 29	80	2,032	61	1,549	30,700	13,955
ZCS1803	Yellow	1.25 - 1.70	32 - 43	1.13 - 1.38	29 - 35	112	2,845	90	2,299	47,000	21,360
ZCS1804	Aluminium	1.50 - 2.10	38 - 53	1.38 - 1.90	35 - 50	119	3,020	92	2,336	67,000	30,455
ZCS6712	-			2.00 - 2.60	50.8 - 66	109.25	2,775	100	2,557	70,528	32,000
ZCS7852	-			2.50 - 3.00	63.5 - 76	109.25	2,775	100	2,557	70,528	32,000

FEED TUBE

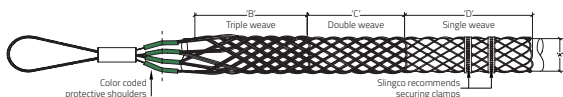
Due to the tight construction of the A Type cable grip, we recommend using the Slingco Feed Tube when inserting cable or rope into the grips. For ease of use, our feed tubes are colour-coded to match the A Type Cable grip.



Slingco Part No.	Tube to fit rope diameter		Feed tube length		Matches Slingco cable grip part no.	Cable grip colour
	in	mm	in	mm		
FTU1890	0.25 - 0.65	6 - 16	28	713	ZCS1799	Black
FTU1891	0.50 - 0.90	13 - 23	40	1,018	ZCS1800	Dark Green
FTU1892	0.75 - 1.10	19 - 28	52	1,324	ZCS1801	Red
FTU1893	1.00 - 1.50	25 - 38	67	1,706	ZCS1802	Dark Blue
FTU1894	1.25 - 1.70	32 - 43	83	2,113	ZCS1803	Yellow
FTU1895	1.50 - 2.10	38 - 53	96	2,444	ZCS1804	Aluminium

MU TYPE - HIGH STRENGTH CABLE GRIP

This grip's triple weave construction is ideal for heavy loads. MU cable grips are colour coded for ease of identification. Perfect for stringing overhead transmission and distribution lines and heavy-load pulls of any kind. Use with bare or insulated cable, conductor or wire. The flexible eye connects with Slingco line pulling swivels for trouble free pulling applications. Made of Galvanised Steel.



Slingco Part No.	Colour Code	Range		Lattice Length		Approx. Break Load	
		in	mm	in	mm	lb	kg
ZCS1710	Dark Green	0.25 - 0.50	6-12	31	787	7,000	3,170
ZCS1711	Brown	0.50 - 0.75	12-19	45	1,143	10,500	4,760
ZCS1712	Light Blue	0.75 - 1.00	19-25	43	1,092	14,100	6,395
ZCS1713	Gold	1.00 - 1.25	25-32	65	1,651	25,000	11,340
ZCS1714	Black	1.25 - 1.50	32-38	59	1,499	31,000	14,065
ZCS1715	Red	1.50 - 1.75	38-44	82	2,083	31,000	14,065
ZCS1716	Dark Blue	1.75 - 2.25	44-57	82	2,083	49,000	22,230
ZCS1750	Yellow	2.00 - 2.50	51-63	72	1,829	49,000	22,230
ZCS1751	Orange	2.50 - 3.00	63-76	72	1,829	49,000	22,230
ZCS1752	Aluminium	3.00 - 3.50	76-89	74	1,880	49,000	22,230
ZCS1753	Light Green	3.50 - 4.00	89-102	76	1,930	49,000	22,230

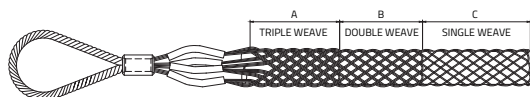
The HD, MD and LD type form a range of conductor grips that are quick and easy to attach and remove, in sizes from 8mm to 48mm, with MBL up to 24,000kgs and WLL 8,000kg. They are suitable for all common conductors, e.g Horse, Lynx, Upas, Zebra and Araucaria plus earth wires OPGW. The flexible eye connects with Slingco line pulling swivels for trouble-free pulling applications. Made of galvanised steel.

HD TYPE - HEAVY DUTY PULLING GRIPS (COLOUR CODED)



HD
275kV - 400kV

Slingco Part No.	Colour Code	Range		Lattice Length		Min. Break Load		WLL 3:1	
		in	mm	in	mm	lb	kg	lb	kg
ZCS7042	Green	0.47 - 0.75	12 - 19	54	1,372	18,739	8,500	6,246	2,833
ZCS6580	Red	0.75 - 0.98	19 - 25	54.36	1,379	29,762	13,500	9,921	4,500
ZCS6413	Blue	0.98 - 1.26	25 - 32	70.70	1,795	33,069	15,000	11,023	5,000
ZCS6414	Gold	1.26 - 1.50	32 - 38	71.10	1,807	39,683	18,000	13,228	6,000
ZCS10164	Black	1.50 - 1.89	38 - 48	73.80	1,838	48,501	24,000	16,167	8,000

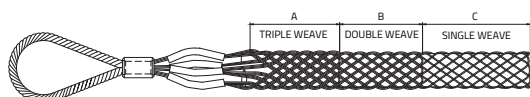


HD TYPE - HEAVY DUTY PULLING GRIPS (NON COLOUR CODED)



HD
275kV - 400kV

Slingco Part No.	Range		Lattice Length		Min. Break Load		WLL 3:1	
	in	mm	in	mm	lb	kg	lb	kg
ZCS10368	0.47 - 0.75	12 - 19	54	1372	18,739	8,500	6,246	2,833
ZCS10369	0.75 - 0.98	19 - 25	54.36	1379	29,762	13,500	9,921	4,500
ZCS10370	0.98 - 1.26	25 - 32	70.7	1795	33,069	15,000	11,023	5,000
ZCS10371	1.26 - 1.50	32 - 38	71.1	1807	39,683	18,000	13,228	6,000
ZCS10372	1.50 - 1.89	38 - 48	73.8	1838	48,501	24,000	16,167	8,000

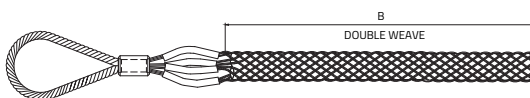


MD TYPE - MEDIUM DUTY PULLING GRIP

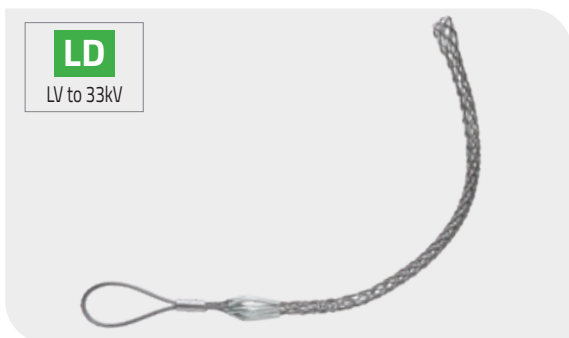


MD
132kV

Slingco Part No.	Colour Code	Range		Lattice Length		Min. Break Load		WLL 3:1	
		in	mm	in	mm	lb	kg	lb	kg
ZCS7229	Green	0.31 - 0.51	8 - 13	24	610	4,960	2,250	1,653	750
ZCS7230	Brown	0.47 - 0.75	12 - 19	24	610	7,452	3,380	2,484	1,127
ZCS7231	Light Blue	0.75 - 0.98	19 - 25	24	610	12,214	5,540	4,071	1,847
ZCS7232	Gold	0.98 - 1.26	25 - 32	24	610	21,054	9,550	7,018	3,183

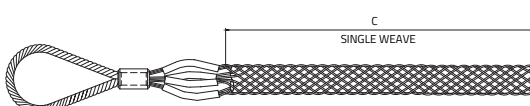


LD TYPE - LIGHT DUTY PULLING GRIP



LD
LV to 33kV

Slingco Part No.	Colour Code	Range		Lattice Length		Min. Break Load		WLL 3:1	
		in	mm	in	mm	lb	kg	lb	kg
ZCS7233	Green	0.40 - 0.51	10 - 13	24	610	2,469	1,120	823	373
ZCS7234	Brown	0.51 - 0.75	13 - 19	24	610	3,704	1,680	1,235	560
ZCS7235	Light Blue	0.75 - 0.98	19 - 25	24	610	4,938	2,240	1,646	747
ZCS7236	Gold	0.98 - 1.50	25 - 38	24	610	9,877	4,480	3,292	1,493



DE TYPE - DOUBLE EYE GRIP



Ideal for pulling light to medium loads; the main advantage over the single eye cable grip is the cable being pulled can be passed through the grip, several cable grips can be used to support over a calculated distance.

Slingco Part No.	Range		Lattice Weave	Lattice Length		Overall Length		Approx. Break Load	
	in	mm		in	mm	in	mm	lb	kg
DOUBLE EYE STANDARD GRIP - GALVANISED									
ZCS0305	0.25 - 0.50	6 - 13	Single	9	230	12	305	1,680	760
ZCS0306	0.50 - 0.75	13 - 19	Single	14	355	17	430	2,240	1,015
ZCS0307	0.75 - 1.00	19 - 25	Single	16	405	20	510	5,600	2,540
ZCS0308	1.00 - 1.50	25 - 38	Single	18	455	24	610	7,840	3,555
ZCS0309	1.50 - 2.00	38 - 50	Double	21	535	29	735	11,200	5,080
ZCS0310	2.00 - 2.50	50 - 63	Double	24	610	34	865	11,200	5,080
ZCS0311	2.50 - 3.50	63 - 89	Double	27	685	39	990	13,440	6,095
ZCS0312	3.50 - 4.50	89 - 115	Double	27	685	39	990	15,680	7,110
ZCS0878	4.50 - 5.50	115 - 140	Double	27	685	39	990	15,680	7,110
ZCS3579	5.31 - 6.30	135 - 160	Double	39.37	1,000	63	1,600	44,800	20,000
ZCS3580	6.33 - 7.48	161 - 190	Double	59.05	1,500	82.67	2,100	60,480	27,000
ZCS3581	7.51 - 8.66	191 - 220	Double	59.05	1,500	82.67	2,100	60,480	27,000
ZCS3582	8.70 - 9.84	221 - 250	Double	59.05	1,500	82.67	2,100	60,480	27,000
DOUBLE EYE STANDARD GRIP - 316 STAINLESS STEEL									
ZCS0823	0.25 - 0.50	6 - 13	Single	9	230	12	305	1,344	610
ZCS1007	0.50 - 0.75	13 - 19	Single	14	355	17	430	1,792	810
ZCS0931	0.75 - 1.00	19 - 25	Single	16	405	20	510	4,480	2,030
ZCS1265	1.00 - 1.50	25 - 38	Single	18	455	24	610	6,272	2,845
ZCS3995	1.14 - 1.57	29 - 40	Double	50	1,270	62	1,575	35,000	15,625
ZCS1252	1.50 - 2.00	38 - 50	Double	21	535	29	735	8,960	4,065
ZCS0319	2.00 - 2.50	50 - 63	Double	24	610	34	865	8,960	4,065
ZCS0213	2.50 - 3.50	63 - 89	Double	27	685	39	990	10,752	4,875
ZCS4873	2.50 - 3.50	63 - 89	Double	70	1,778	80	2,032	13,500	6,027
ZCS4596	2.50 - 3.50	63 - 89	Triple	56	1,422	152	3,860	16,138	7,204
ZCS0332	3.50 - 4.50	89 - 115	Double	27	685	39	990	12,544	5,690
ZCS1982	4.50 - 5.50	115 - 140	Double	27	685	39	990	12,544	5,690
ZCS4869	4.50 - 5.50	115 - 140	Double	70	1,778	80	2,032	13,500	6,027

OS TYPE - OFFSET EYE GRIP



Similar to the SE Type single eye cable grip, but for when offset positioning is required. Excellent for pulling slack out of lines that have been pulled. May also be used for removing underground cables when end of cable is available.

Slingco Part No.	Range		Lattice Weave	Lattice Length		Overall Length		Approx. Break Load	
	in	mm		in	mm	in	mm	lb	kg
OFFSET EYE STANDARD GRIP - GALVANISED									
ZCS1860	0.25 - 0.50	6 - 13	Single	9	230	12	305	1,680	760
ZCS1861	0.50 - 0.75	13 - 19	Single	14	355	17	430	2,240	1015
ZCS1862	0.75 - 1.00	19 - 25	Single	16	405	20	510	5,600	2540
ZCS1863	1.00 - 1.50	25 - 38	Single	18	455	24	610	7,837	3555
ZCS1864	1.50 - 2.00	38 - 50	Double	21	535	29	735	11,200	5080
ZCS1865	2.00 - 2.50	50 - 63	Double	24	610	34	865	11,200	5080
ZCS1866	2.50 - 3.50	63 - 89	Double	27	685	39	990	13,440	6095
ZCS1867	3.50 - 4.50	89 - 115	Double	27	685	39	990	15,680	7110
ZCS1974	4.50 - 5.50	115 - 140	Double	27	685	39	990	15,680	7110
OFFSET EYE STANDARD GRIP - 316 STAINLESS STEEL									
ZCS1986	0.25 - 0.50	6 - 13	Single	9	230	12	305	1,344	610
ZCS1987	0.50 - 0.75	13 - 19	Single	14	355	17	430	1,792	810
ZCS1988	0.75 - 1.00	19 - 25	Single	16	405	20	510	4,480	2,030
ZCS1989	1.00 - 1.50	25 - 38	Single	18	455	24	610	6,272	2,845
ZCS1990	1.50 - 2.00	38 - 50	Double	21	535	29	735	8,960	4065
ZCS1991	2.00 - 2.50	50 - 63	Double	24	610	34	865	8,960	4,065
ZCS1992	2.50 - 3.50	63 - 89	Double	27	685	39	990	10,752	4,875
ZCS1993	3.50 - 4.50	89 - 115	Double	27	685	39	990	12,544	5,690
ZCS1994	4.50 - 5.50	115 - 140	Double	27	685	39	990	12,544	5,690
ZCS3994	5.50 - 7.0	140 - 180	Double	23.5	596	38.4	976	4,500	2,041
ZCS4069	8.0 - 9.0	203 - 229	Double	59	1,500	74	1,880	20,000	8,928

LU TYPE - LACE UP GRIP



Ideal for pulling light to medium loads; the LU-type is fitted to the cable being pulled by stitching it together, like a football. Mainly used where a 'typical' cable grip can't be fitted over a connector at the end of a cable. For use in pulling when the end is not accessible. The LU Type is wrapped around the cable, then closed with the wire lace provided. See Lace Up instructions on page 51.

Slingco Part No.	Range		Lattice Weave	Lattice Length		Overall Length		Approx. Break Load	
	in	mm		in	mm	in	mm	lb	kg
LACE UP STANDARD GRIP - GALVANISED									
ZCS1157	0.25 - 0.50	6 - 13	Single	8	230	17	305	1,680	760
ZCS0872	0.50 - 0.75	13 - 19	Single	17	355	22	430	2,240	1,015
ZCS0871	0.75 - 1.00	19 - 25	Single	14.5	405	19	510	5,600	2,540
ZCS0328	1.00 - 1.50	25 - 38	Single	15	455	22	610	6,000	2,722
ZCS0329	1.50 - 2.00	38 - 50	Double	27	535	36	735	11,200	5,080
ZCS0330	2.00 - 2.50	50 - 63	Double	26	610	36	865	11,200	5,080
ZCS0331	2.50 - 3.50	63 - 89	Double	22	685	31	990	13,440	6,095
ZCS0853	3.50 - 4.50	89 - 115	Double	27	685	39	990	15,680	7,110
ZCS1109	4.50 - 5.50	115 - 140	Double	27	685	39	990	15,680	7,110
ZCS4463	4.72 - 5.90	120 - 150	Triple	59	1,500	102	2600	32,928	14,700
ZCS3584	5.31 - 6.30	135 - 160	Double	39	1,000	63	1,600	38,080	17,000
ZCS3585	6.33 - 7.48	161 - 190	Double	59	1,500	83	2,100	38,080	17,000
ZCS3586	7.51 - 8.66	191 - 220	Double	59	1,500	83	2,100	38,080	17,000
ZCS3270	7.90 - 8.66	200 - 250	Triple	78.75	2,280	102	2,732	70,548	32,000
ZCS3587	8.70 - 9.84	221 - 250	Double	59	1,500	83	2,100	38,080	17,000
ZCS3588	9.88 - 11.81	251 - 300	Double	79	2,000	106	2,700	38,080	17,000
LACE UP STANDARD GRIP - 316 STAINLESS STEEL									
ZCS1983	0.25 - 0.50	6 - 13	Single	9	230	12	305	1,344	610
ZCS1796	0.50 - 0.75	13 - 19	Single	14	355	17	430	1,792	810
ZCS1789	0.75 - 1.00	19 - 25	Single	16	405	20	510	4,480	2,030
ZCS1797	1.00 - 1.50	25 - 38	Single	18	455	24	610	6,272	2,845
ZCS1984	1.50 - 2.00	38 - 50	Double	21	535	29	735	8,960	4,065
ZCS2466	2.00 - 2.50	50 - 63	Double	24	610	34	865	8,960	4,065
ZCS0816	2.50 - 3.50	63 - 89	Double	27	685	39	990	10,752	4,875
ZCS5094	2.75 - 3.44	69 - 87	Multiple	55	1,390	81	2,063	40,000	17,857
ZCS1356	3.50 - 4.50	89 - 115	Double	27	685	39	990	12,544	5,690
ZCS2832	3.50 - 4.50	89 - 115	Triple	27	685	39	990	14,012	6,300
ZCS1355	4.50 - 5.50	115 - 140	Double	27	685	39	990	12,544	5,690
ZCS2833	4.50 - 5.50	115 - 140	Triple	27	685	39	990	16,128	7,315

ST TYPE - SINGLE EYE DOUBLE WEAVE GRIP



This Slingco grip features a double weave construction for medium to heavy pulling applications in underground installations.

Slingco Part No.	Range		Lattice Length		Approx. Break Load	
	in	mm	in	mm	lb	kg
SHORT LENGTH - GALVANISED STEEL						
ZCS2511	0.50 - 0.62	13 - 16	21	534	4,500	2,040
ZCS2512	0.62 - 0.75	16 - 19	24	610	5,600	2,540
ZCS2513	0.75 - 1.00	19 - 25	24	610	6,800	3,085
ZCS2514	1.00 - 1.50	25 - 38	24	610	9,600	4,355
ZCS2515	1.50 - 2.00	38 - 50	24	610	16,400	7,441
ZCS2516	2.00 - 2.50	50 - 63	24	610	18,500	8,390
ZCS2517	2.50 - 3.00	63 - 76	24	610	24,500	11,115
ZCS2518	3.00 - 3.50	76 - 89	24	610	24,500	11,115
ZCS2519	3.50 - 4.00	89 - 102	26	660	31,000	14,065
LONGER LENGTH - GALVANISED STEEL						
ZCS2520	0.75 - 1.00	19 - 25	36	914	6,800	3,085
ZCS2521	1.00 - 1.50	25 - 38	36	914	9,600	4,355
ZCS2522	1.50 - 2.00	38 - 50	36	914	16,400	7,440
ZCS2523	2.00 - 2.50	50 - 63	36	914	18,500	8,390
ZCS2524	2.50 - 3.00	63 - 76	36	914	24,500	11,115
ZCS2777	3.00 - 3.50	76 - 89	36	914	24,500	11,115
ZCS2778	3.50 - 4.00	89 - 102	40	1,010	31,000	14,065

FLEXIBLE & THIMBLE EYE GRIP - SINGLE EYE



Designed to fit the typical European range of cables, and with a longer lattice length, these grips are ideal for pulling medium to heavy loads. Made of galvanised steel, this grip has a flexible eye construction – and is also available with a reinforced thimble eye.



Flexible Eye	Thimble Eye	Type	Range		Lattice Length		Overall Length		Approx. Break Load	
			in	mm	in	mm	in	mm	lb	kg
ZCS0824	ZCS3133	Single	0.59 - 0.79	15 - 20	48	1,220	53.5	1,358	2,730	1,240
ZCS0825	ZCS3134	Single	0.79 - 1.18	20 - 30	49	1,250	53.5	1,358	3,370	1,530
ZCS0826	ZCS3135	Double	0.79 - 1.18	20 - 30	49	1,250	55	1,393	4,380	1,990
ZCS0827	ZCS3136	Single	1.18 - 1.57	30 - 40	49	1,250	55	1,393	5,620	2,550
ZCS0828	ZCS3137	Double	1.18 - 1.57	30 - 40	49	1,250	65	1,652	6,740	3,060
ZCS0829	ZCS3138	Double	1.57 - 1.97	40 - 50	59	1,500	65.5	1,661	13,060	5,930
ZCS0830	ZCS3139	Double	1.97 - 2.36	50 - 60	59	1,500	69	1,750	14,610	6,630
ZCS0831	ZCS3140	Double	2.36 - 2.75	60 - 70	59	1,500	69	1,750	17,160	7,790
ZCS0832	ZCS3141	Double	2.75 - 3.54	70 - 90	59	1,500	69	1,750	17,870	8,110
ZCS0833	ZCS3142	Double	3.54 - 4.33	90 - 110	59	1,500	69	1,750	26,070	11,830
ZCS0834	ZCS3143	Double	4.33 - 5.12	110 - 130	59	1,500	69	1,750	26,070	11,830
ZCS0835	ZCS3144	Double	4.72 - 5.90	120 - 150	59	1,500	69	1,750	28,100	12,750
ZCS0836	ZCS3145	Double	5.51 - 7.09	140 - 180	59	1,500	69	1,750	28,100	12,750

Slingco Part No.	Range		Lattice Length		Approx. Break Load	
	in	mm	in	mm	lb	kg
SHORTER LENGTH						
ZCS4783	2.36 - 2.75	60 - 70	43	1,096	17,450	7,790
ZCS4784	2.75 - 3.54	70 - 90	43	1,096	18,166	8,110
ZCS4785	3.54 - 4.33	90 - 110	43	1,096	26,500	11,830
ZCS4786	4.33 - 5.11	110 - 130	43	1,096	26,500	11,830
ZCS4787	4.72 - 5.90	120 - 150	43	1,096	28,560	12,750

FLEXIBLE & THIMBLE EYE GRIP - DOUBLE EYE



This grip has a double eye construction allowing the cables being pulled to pass through the grip. Available with flexible eye or reinforced thimble eye.

Flexible Eye	Thimble Eye	Type	Range		Lattice Length		Overall Length		Approx. Break Load	
			in	mm	in	mm	in	mm	lb	kg
ZCS0837	ZCS3146	Single	0.59 - 0.79	15 - 20	49	1,250	59	1,500	2,730	1,240
ZCS0838	ZCS3147	Single	0.79 - 1.18	20 - 30	49	1,250	59	1,500	3,370	1,530
ZCS0839	ZCS3148	Double	0.79 - 1.18	20 - 30	49	1,250	59	1,500	4,380	1,990
ZCS0840	ZCS3149	Single	1.18 - 1.57	30 - 40	49	1,250	59	1,500	5,620	2,550
ZCS0841	ZCS3150	Double	1.18 - 1.57	30 - 40	49	1,250	59	1,500	6,740	3,060
ZCS0842	ZCS3151	Double	1.57 - 1.97	40 - 50	59	1,500	69	1,750	13,060	5,930
ZCS0843	ZCS3152	Double	1.97 - 2.36	50 - 60	59	1,500	69	1,750	14,610	6,630
ZCS0844	ZCS3153	Double	2.36 - 2.76	60 - 70	59	1,500	69	1,750	17,160	7,790
ZCS0845	ZCS3154	Double	2.76 - 3.54	70 - 90	59	1,500	69	1,750	17,870	8,110
ZCS0847	ZCS3155	Double	3.54 - 4.33	90 - 110	59	1,500	69	1,750	26,070	11,830
ZCS0848	ZCS3156	Double	4.33 - 5.12	110 - 130	59	1,500	69	1,750	26,070	11,830
ZCS0849	ZCS3157	Double	4.72 - 5.91	120 - 150	59	1,500	69	1,750	28,100	12,750
ZCS0850	ZCS3158	Double	5.51 - 7.09	140 - 180	59	1,500	69	1,750	28,100	12,750

JUNIOR TYPE CABLE GRIP

LIGHT DUTY



Slingco Part No	Range		Lattice Length		Eye Length		Approx. Break Load	
	in	mm	in	mm	in	mm	lb	kg
ZCS8562	0.25 - 0.36	6.4 - 9.1	7.5	190.5	2.5	63.5	450	204
ZCS8563	0.37 - 0.49	9.4 - 12.4	11	279.4	3	76.2	900	408
ZCS8564	0.50 - 0.61	12.7 - 15.5	12.5	317.5	3	76.2	1,300	589
ZCS8643	0.50 - 0.75	15.7 - 19.0	16.5	419.1	4.5	114.3	2,240	884
ZCS8565	0.62 - 0.74	12.7 - 19.0	16.5	419.1	4.5	114.3	1,950	1,016
ZCS8566	0.75 - 0.99	19.1 - 25.1	17	431.8	4	101.6	2,800	1,270
ZCS8567	1.0 - 1.25	25.1 - 31.5	17.5	444.5	4.5	114.3	3,900	1,769

SE TYPE - SINGLE EYE GRIP



Slingco Part No.	Range		Lattice Weave	Lattice length		Overall Length		Approx. Break Load	
	in	mm		in	mm	in	mm	lb	kg
SINGLE EYE STANDARD GRIP - GALVANISED									
ZCS0320	0.25 - 0.50	6 - 13	Single	9	230	12	305	1,680	760
ZCS0321	0.50 - 0.75	13 - 19	Single	14	355	17	430	2,240	1,015
ZCS0322	0.75 - 1.00	19 - 25	Single	16	405	20	510	5,600	2,540
ZCS0323	1.00 - 1.50	25 - 38	Single	18	455	24	610	7,840	3,555
ZCS0324	1.50 - 2.00	38 - 50	Double	21	535	29	735	11,200	5,080
ZCS0325	2.00 - 2.50	50 - 63	Double	24	610	34	865	11,200	5,080
ZCS0326	2.50 - 3.50	63 - 89	Double	27	685	39	990	13,440	6,095
ZCS0327	3.50 - 4.50	89 - 115	Double	27	685	39	990	15,680	7,110
ZCS0821	4.50 - 5.50	115 - 140	Double	27	685	39	990	15,680	7,110
ZCS3574	5.31 - 6.30	135 - 160	Double	36.9	900	49.8	1,380	44,000	20,000
ZCS3575	6.3 - 7.48	160 - 190	Double	57.2	1,500	78.7	2,000	44,000	20,000
ZCS3576	7.48 - 8.66	190 - 220	Double	61.9	1,500	81.6	2,000	44,000	20,000
ZCS3577	8.66 - 9.84	220 - 250	Double	59.7	1,500	72.7	2,000	44,000	20,000
ZCS3578	9.84 - 11.81	250 - 300	Single	80.0	2,000	93.3	2,600	44,000	20,000

Ideal for pulling light to medium loads; typical application - 'standard pull' of single or group of cables, where additional support is unnecessary, or if used in conjunction with other cable grips.

SINGLE EYE STANDARD GRIP - 316 STAINLESS STEEL									
Slingco Part No.	Range		Lattice Weave	Lattice Length		Overall Length		Approx. Break Load	
	in	mm		in	mm	in	mm	lb	kg
ZCS1380	0.25 - 0.50	6 - 13	Single	9	230	12	305	1,344	610
ZCS1523	0.50 - 0.75	13 - 19	Single	14	355	17	430	1,792	810
ZCS1373	0.75 - 1.00	19 - 25	Single	16	405	20	510	4,480	2,030
ZCS1952	1.00 - 1.50	25 - 38	Single	18	455	24	610	6,272	2,845
ZCS1381	1.50 - 2.00	38 - 50	Double	21	535	29	735	8,960	4,065
ZCS1977	2.00 - 2.50	50 - 63	Double	24	610	34	865	8,960	4,065
ZCS1979	2.50 - 3.50	63 - 89	Double	27	685	39	990	10,752	4,875
ZCS1980	3.50 - 4.50	89 - 115	Double	27	685	39	990	12,544	5,690
ZCS1981	4.50 - 5.50	115 - 140	Double	27	685	39	990	12,544	5,690

SINGLE EYE DOUBLE WEAVE PULLING GRIP



Flex eye general duty pulling grips. Made of galvanised wire these grips in 600 mm and 900 mm lengths are perfect for general light to medium duty pulling applications.

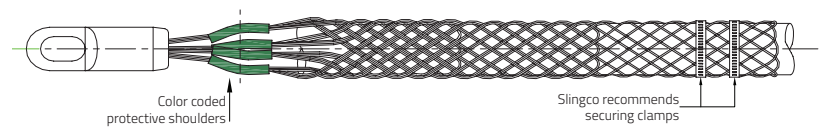
Slingco Part No.	Range		Lattice Weave	Lattice Length		Overall Length		Approx. Break Load	
	in	mm		in	mm	in	mm	lb	kg
600 mm SERIES									
ZCS12627	0.25-0.38	6 - 10	Double	23.6	600	34.9	886	3,316	1,504
ZCS12628	0.38-0.79	10 - 20	Double	23.6	600	34.9	886	4,101	1,860
ZCS12629	0.79-1.18	20 - 30	Double	23.6	600	34.9	886	4,974	2,256
ZCS12630	1.18-1.57	30 - 40	Double	23.6	600	34.9	886	8,148	3,696
ZCS12631	1.57-1.97	40 - 50	Double	23.6	600	35.2	895	12,103	5,490
ZCS12632	1.97-2.5	50 - 65	Double	23.6	600	35.2	895	12,103	5,490
ZCS12633	2.5-3.15	65 - 80	Double	23.6	600	35.2	895	16,138	7,320
ZCS12634	3.15-3.75	80 - 95	Double	23.6	600	35.2	895	16,138	7,320
ZCS12635	3.75-4.33	95 - 110	Double	23.6	600	35.2	895	23,398	10,613
ZCS12636	4.33-5.12	110 - 130	Double	23.6	600	35.2	895	23,398	10,613
ZCS12637	5.12-5.91	130 - 150	Double	23.6	600	35.2	904	23,398	10,613
900 mm SERIES									
ZCS12638	0.25-0.38	6 - 10	Double	35.4	900	46.7	1,186	3,316	1,504
ZCS12639	0.38-0.79	10 - 20	Double	35.4	900	46.7	1,186	4,101	1,860
ZCS12640	0.79-1.18	20 - 30	Double	35.4	900	46.7	1,186	4,974	2,256
ZCS12641	1.18-1.57	30 - 40	Double	35.4	900	46.7	1,186	8,148	3,696
ZCS12642	1.57-1.97	40 - 50	Double	35.4	900	47.04	1,195	12,103	5,490
ZCS12643	1.97-2.5	50 - 65	Double	35.4	900	47.04	1,195	12,103	5,490
ZCS12644	2.5-3.15	65 - 80	Double	35.4	900	47.04	1,195	16,138	7,320
ZCS12645	3.15-3.75	80 - 95	Double	35.4	900	47.04	1,195	16,138	7,320
ZCS12646	3.75-4.33	95 - 110	Double	35.4	900	47.04	1,195	23,398	10,613
ZCS12647	4.33-5.12	110 - 130	Double	35.4	900	47.04	1,195	23,398	10,613
ZCS12648	5.12-5.91	130 - 150	Double	35.4	900	47.04	1,204	23,398	10,613
ZCS12649	5.91-7.0	150 - 180	Double	35.4	900	48.1	1,223	28,078	12,736

R TYPE - ROTATING MULTI-WEAVE GRIP

Like the MU type, the rotating eye grip has a triple weave construction and is colour coded for ease of identification. The steel forged revolving head is ideal for connecting to Slingco swivels. Warning: The Slingco rotating eye does not revolve under load and does not replace the use of a line swivel. Please see page 29 for swivel and grip match-up and safety and technical information. Made of galvanised steel.



Slingco Part No.	Range		Lattice Length		Approx. Break Load		Colour Code
	in	mm	in	mm	lb	kg	
ZCS2177	0.25 - 0.50	6 - 12	28	720	7,000	3,175	Dark Green
ZCS2178	0.50 - 0.75	12 - 19	39	978	10,500	4,760	Brown
ZCS2179	0.75 - 1.00	19 - 25	47	1,199	14,100	6,395	Light Blue
ZCS2180	1.00 - 1.25	25 - 32	60	1,529	25,000	11,340	Gold
ZCS2181	1.25 - 1.50	32 - 38	51	1,289	31,000	14,061	Black
ZCS2182	1.50 - 1.75	38 - 44	73	1,860	31,000	14,061	Red
ZCS2183	1.75 - 2.25	44 - 57	69	1,747	43,000	19,505	Dark blue
ZCS2779	2.00 - 2.50	51 - 63	54	1,370	43,000	19,505	Yellow
ZCS2780	2.50 - 3.00	63 - 76	52	1,311	43,000	19,505	Orange
ZCS2781	3.00 - 3.50	76 - 89	53	1,342	43,000	19,505	Aluminium
ZCS2782	3.50 - 4.00	89 - 102	54	1,351	43,000	19,505	Light Green



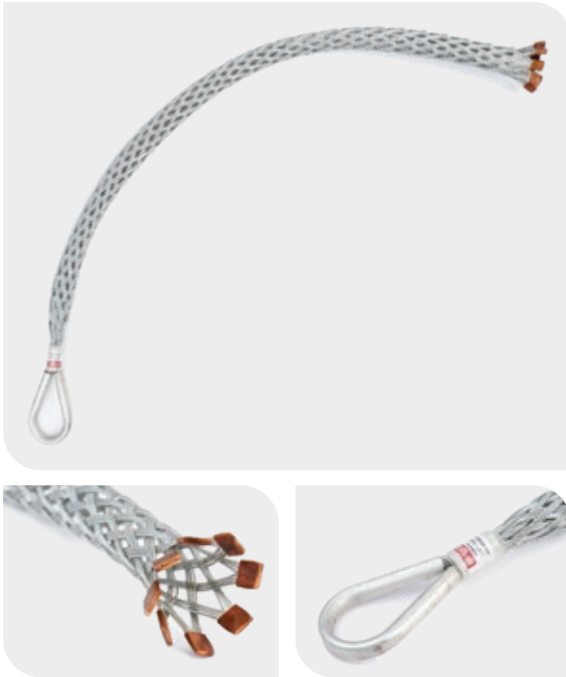
RT TYPE - ROTATING EYE DOUBLE WEAVE GRIP



Double weave construction for medium to heavy pulling applications in underground installations. Additionally its steel forged revolving head is ideal for connecting to Slingco swivels. Warning: The Slingco RT Type Rotating Eye Grip does not revolve under load. The rotating eye does not replace the need for a swivel. Please see page 29 for swivel and grip match-up and safety and technical information.

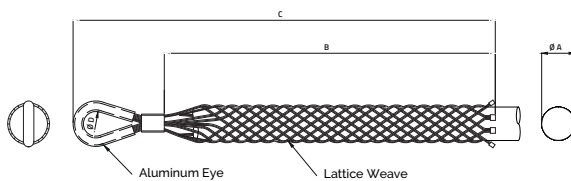
Slingco Part No.	Range		Lattice Length		Approx. Break Load	
	in	mm	in	mm	lb	kg
SHORT LENGTH - GALVANISED STEEL						
ZCS2734	0.50 - 0.62	13 - 16	14	347	5,600	2,540
ZCS2735	0.62 - 0.75	16 - 19	13	327	6,800	3,084
ZCS2736	0.75 - 1.00	19 - 25	19	475	6,800	3,084
ZCS2738	1.00 - 1.50	25 - 38	20.5	519	12,800	5,806
ZCS2739	1.50 - 2.00	38 - 50	22	552	16,400	7,440
ZCS2740	2.00 - 2.50	50 - 63	23	587	27,200	12,338
ZCS2741	2.50 - 3.00	63 - 76	25	642	33,000	14,969
ZCS2742	3.00 - 3.50	76 - 89	29	731	41,000	19,504
ZCS2743	3.50 - 4.00	89 - 102	32	804	43,000	19,504
ZCS2744	4.00 - 4.50	102 - 115	33	826	43,000	19,504
STANDARD - LONGER LENGTH - GALVANISED STEEL						
ZCS2745	0.50 - 0.62	13 - 16	18	467	5,600	2,540
ZCS2746	0.62 - 0.75	16 - 19	17	436	6,800	3,084
ZCS2747	0.75 - 1.00	19 - 25	30	765	6,800	3,084
ZCS2748	1.00 - 1.50	25 - 38	34	869	12,800	5,806
ZCS2749	1.50 - 2.00	38 - 50	30	747	16,400	7,439
ZCS2750	2.00 - 2.50	50 - 63	30	740	27,200	12,338
ZCS2751	2.50 - 3.00	63 - 76	35	893	33,000	14,969
ZCS2752	3.00 - 3.50	76 - 89	35	866	41,000	18,597
ZCS2753	3.50 - 4.00	89 - 102	42	1,058	43,000	19,504
ZCS2754	4.00 - 4.50	102 - 115	42	1,048	43,000	19,504
ZCS2755	4.50 - 5.00	115 - 127	53	1,350	43,000	19,504
ZCS2756	5.00 - 6.00	127 - 153	54	1,361	43,000	19,504
ZCS2757	6.00 - 7.00	153 - 178	62	1,563	43,000	19,504

REINFORCED EYE UNDERGROUND GRIPS



This line of grips are specially designed for underground applications. The eye is enclosed in an aluminium tube which provides added support when running within conduit and trenches. Plus these underground pulling grips are made from coated airline wire for added strength and flexibility.

Now with expanded range capacity use one grip for a wider range of diameters. Plus the expanded range allows for easier installation on conductor or any cylindrical object. As with all pulling applications Slingco strongly recommends banding. See grip installation instructions on page 50.



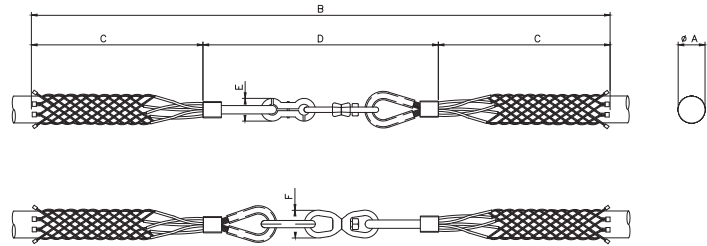
Slingco part no.	Ø A nominal in (mm)	Range	Lattice Weave	B in (mm)	C in (mm)	Ø D Eye in (mm)	Approx. Break Load lb (kg)
SINGLE EYE SINGLE / DOUBLE WEAVE PVC COATED GALVANISED - 0.25 - 0.50" (6 - 13mm)							
ZCS6355	0.37 (9.5)	0.25-0.5 (6-13)	Single	18 (457)	21.75 (552)	0.70 (18)	1,500 (680)
ZCS6356	0.37 (9.5)	0.25-0.5 (6-13)	Single	24 (610)	27.75 (705)	0.70 (18)	1,500 (680)
ZCS6357	0.37 (9.5)	0.25-0.5 (6-13)	Double (uncoated)	18 (457)	21.75 (552)	0.70 (18)	3,500 (1,588)
ZCS6358	0.37 (9.5)	0.25-0.5 (6-13)	Double (uncoated)	24 (610)	27.75 (705)	0.70 (18)	3,500 (1,588)
SINGLE EYE SINGLE / DOUBLE / TRIPLE WEAVE PVC COATED GALVANISED - 0.50 - 0.75" (13 - 19MM)							
ZCS6359	0.63 (16)	0.50-0.75 (13-19)	Single	18 (457)	21.75 (552)	0.70 (18)	1,500 (680)
ZCS6360	0.63 (16)	0.50-0.75 (13-19)	Single	24 (610)	27.75 (705)	0.70 (18)	1,500 (680)
ZCS6361	0.63 (16)	0.50-0.75 (13-19)	Double (uncoated)	18 (457)	21.75 (552)	0.70 (18)	4,000 (1,814)
ZCS6362	0.63 (16)	0.50-0.75 (13-19)	Double (uncoated)	24 (610)	27.75 (705)	0.70 (18)	4,000 (1,814)
ZCS6363	0.63 (16)	0.50-0.75 (13-19)	Triple	12 (305)	17 (432)	0.87 (22)	5,200 (2,359)
ZCS6364	0.63 (16)	0.50-0.75 (13-19)	Triple	18 (457)	23 (584)	0.87 (22)	5,200 (2,359)
ZCS6365	0.63 (16)	0.50-0.75 (13-19)	Triple	24 (610)	29 (737)	0.87 (22)	5,200 (2,359)
ZCS6366	0.63 (16)	0.50-0.75 (13-19)	Triple	36 (914)	41 (1,041)	0.87 (22)	5,200 (2,359)
SINGLE EYE SINGLE / DOUBLE / TRIPLE WEAVE PVC COATED GALVANISED - 0.75 - 1.25" (19-32MM)							
ZCS6367	1.0 (25)	0.75-1.25 (19-32)	Single	18 (457)	23 (584)	0.87 (22)	3,000 (1,361)
ZCS6368	1.0 (25)	0.75-1.25 (19-32)	Single	24 (610)	29 (737)	0.87 (22)	3,000 (1,361)
ZCS6369	1.0 (25)	0.75-1.25 (19-32)	Double	18 (457)	23 (584)	0.87 (22)	6,000 (2,722)
ZCS6370	1.0 (25)	0.75-1.25 (19-32)	Double	24 (610)	29 (737)	0.87 (22)	6,000 (2,722)
ZCS6371	1.0 (25)	0.75-1.25 (19-32)	Triple	18 (457)	23 (584)	0.87 (22)	7,500 (3,402)
ZCS6372	1.0 (25)	0.75-1.25 (19-32)	Triple	24 (610)	29 (737)	0.87 (22)	10,000 (4,537)
SINGLE EYE TRIPLE WEAVE PVC COATED GALVANISED - 1.25 - 4.88" (32 - 124MM)							
ZCS6373	1.61 (41)	1.25-2.0 (32-51)	Triple	26 (660)	31 (787)	1.42 (36)	7,500 (3,402)
ZCS6374	1.61 (41)	1.25-2.0 (32-51)	Triple	32 (813)	37 (940)	1.42 (36)	10,500 (4,764)
ZCS6375	2.37 (60)	2.0-2.75 (51-70)	Triple	32 (813)	37 (940)	1.91 (48.5)	10,500 (4,764)
ZCS6376	2.37 (60)	2.0-2.75 (51-70)	Triple	38 (965)	44.3 (1,125)	1.91 (48.5)	13,500 (6,125)
ZCS6377	3.12 (70)	2.75-3.5 (70-89)	Triple	38 (965)	44.3 (1,125)	1.91 (48.5)	13,500 (6,125)
ZCS6378	3.12 (70)	2.75-3.5 (70-89)	Triple	46 (1,168)	52.3 (1,328)	1.91 (48.5)	16,500 (7,486)
ZCS6379	3.87 (99)	3.5-4.25 (89-108)	Triple	46 (1,168)	52.3 (1,328)	1.91 (48.5)	16,500 (7,486)
ZCS6380	3.87 (99)	3.5-4.25 (89-108)	Triple	52 (1,321)	58.3 (1,481)	1.91 (48.5)	19,500 (8,847)
ZCS6381	4.56 (116)	4.25-4.87 (108-124)	Triple	52 (1,321)	58.3 (1,481)	1.91 (48.5)	18,000 (8,167)
ZCS6382	4.56 (116)	4.25-4.87 (108-124)	Triple	58 (1,473)	64.3 (1,633)	1.91 (48.5)	19,500 (8,847)

Lengths B and C when on nominal mandrel ØA +/- 5%

SPLICING GRIP - ROTATING SWIVEL LINK

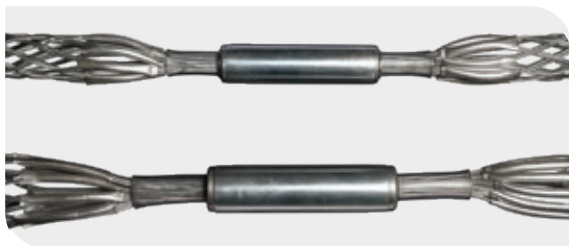


Slingco Rotating Swivel Link Grips are perfect for stringing replacement wire and cable on equipment and in drilling or rigging systems. Not recommended for use in overhead stringing applications. Use the existing cable as a pull wire to string the replacement cable. These grips are available with differently sized grips for each side. Call for assistance in selecting the proper grip. Link opens for easy installation and adjustment. Made of galvanised steel.

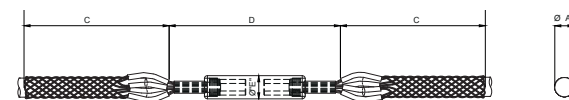


Slingco Part No.	Range		Ø A Nominal		B Length		C Length		D Length		E Length		F Length		Approx. Break Load	
	in	mm	in	mm	in	mm	in	mm	in	mm	in	mm	in	mm	lb	kg
ZCS3493	0.25 - 0.50	6 - 13	0.37	9.5	100.0	2,542	44.3	1,127	11.3	288	0.87	22	1.25	32	2,400	1,089
ZCS3494	0.50 - 1.00	13 - 25	0.75	19	103.2	2,621	45.7	1,160	11.8	301	1.38	35	1.25	32	3,526	1,599
ZCS3495	1.00 - 1.50	25 - 38	1.26	32	104.5	2,654	45.7	1,160	13.1	334	1.61	41	1.61	41	5,070	2,300
ZCS3496	1.50 - 2.00	38 - 51	1.75	44.5	105.2	2,673	45.7	1,160	13.9	353	1.61	41	2.0	51	8,000	3,629
ZCS3497	2.00 - 2.75	51 - 70	2.38	60.5	105.2	2,673	45.7	1,160	13.9	353	1.61	41	2.0	51	10,000	4,537
ZCS3498	2.75 - 3.50	70 - 90	3.15	80	105.2	2,673	45.7	1,160	13.9	353	1.61	41	2.0	51	10,000	4,537
ZCS3499	3.50 - 4.25	89 - 108	3.88	98.5	108.4	2,753	45.7	1,200	13.9	353	1.61	41	2.0	51	10,000	4,537

SPLICING GRIP - ROTATING BARREL



Slingco Rotating Barrel Swivel grips have a high capacity swivel that travels smoothly when being strung in straight line pulling.

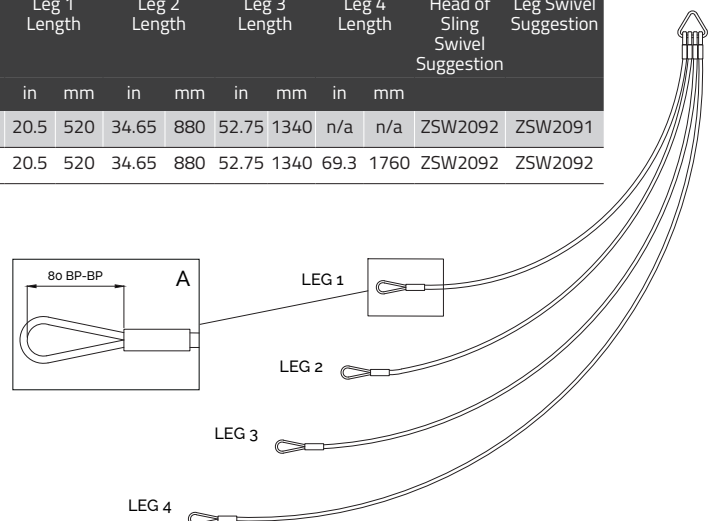


Slingco Part No.	Range		Ø A Nominal		B Length		C Length		D Length		Ø E		Approx. Break Load	
	in	mm	in	mm	in	mm	in	mm	in	mm	in	mm	lb	kg
ZCS3505	0.25-0.50	6-13	0.37	9.5	66.1	1,680	29.7	755	6.7	170	0.9	23	4,400	1,964
ZCS3506	0.50-1.00	13-25	0.75	19	87.8	2,230	40.0	1,015	7.9	200	1.0	25.4	7,400	3,304
ZCS3507	1.00-1.50	25-38	1.25	32	79.9	2,030	35.2	895	9.5	240	1.4	36	10,000	4,530
ZCS3508	1.50-2.00	38-51	1.75	44.5	72.0	1,830	31.3	795	9.5	240	1.4	36	12,000	5,357
ZCS3509	2.00-2.75	51-70	2.38	60.5	85.8	2,180	37.0	940	11.8	300	1.6	41	16,000	7,142
ZCS3510	2.75-3.50	70-90	3.15	80	107.5	2,730	47.0	1,195	13.3	340	1.9	48.5	20,000	8,928
ZCS3511	3.50-4.25	89-108	3.87	98.5	104.3	2,650	44.5	1,130	15.3	390	1.9	48.5	24,000	10,714

TRI & QUAD PULLING SLING

This staggered pulling sling is designed to allow the pulling of multiple conductors at the same time while minimizing the overall diameter of your pulling bundle. These pulling slings come in a three leg or four leg versions. One should use a swivel for each leg and at the head of the sling to release torsion and allow the conductors to rotate freely. The suggested swivels are listed with each model.

Slingco Part No.	Leg 1 Length		Leg 2 Length		Leg 3 Length		Leg 4 Length		Head of Sling Swivel Suggestion	Leg Swivel Suggestion
	in	mm	in	mm	in	mm	in	mm		
ZSH2264	20.5	520	34.65	880	52.75	1340	n/a	n/a	ZSW2092	ZSW2091
ZSH2265	20.5	520	34.65	880	52.75	1340	69.3	1760	ZSW2092	ZSW2092



OPEN ENDED GRIP



Slingco Part No.	Range		Lattice Weave	Lattice Length		Approx. Break Load	
	in	mm		in	mm	lb	kg
OPEN ENDED STANDARD GRIP - GALVANISED							
ZCS0313	0.25 - 0.50	6 - 13	Single	15	380	1,680	760
ZCS6420	0.25 - 0.50	6 - 13	Double	22	559	3,500	1,588
ZCS0314	0.50 - 0.75	13 - 19	Single	24	610	2,240	1,015
ZCS6421	0.50 - 0.75	13 - 19	Double	30	762	4,500	2,040
ZCS6425	0.50 - 0.75	13 - 19	Multi	70	1,779	7,500	3,400
ZCS0315	0.75 - 1.00	19 - 25	Single	28	710	5,600	2,540
ZCS6422	0.75 - 1.25	19 - 32	Double	30	762	8,000	3,630
ZCS6426	0.75 - 1.00	19 - 25	Multi	80	2,032	11,800	5,352
ZCS0316	1.00 - 1.50	25 - 38	Single	32	815	7,840	3,555
ZCS6423	1.00 - 1.50	25 - 38	Double	36	915	10,000	4,537
ZCS6427	1.00 - 1.50	25 - 38	Multi	90	2,285	20,000	9,070
ZCS0317	1.50 - 2.00	38 - 50	Double	36	915	11,200	5,080
ZCS0318	2.00 - 2.50	50 - 63	Double	42	1,065	11,200	5,080
ZCS1158	2.50 - 3.50	63 - 89	Double	48	1,220	13,440	6,095
ZCS1159	3.50 - 4.50	89 - 115	Double	54	1,370	15,680	7,110
ZCS6424	4.25 - 4.88	108 - 124	Triple	55	1,400	19,500	8,847
ZCS1975	4.50 - 5.50	115 - 140	Double	54	1,370	15,680	7,110
OPEN ENDED STANDARD GRIP - 316 STAINLESS STEEL							
ZCS1995	0.25 - 0.50	6 - 13	Single	15	380	1,344	610
ZCS1996	0.50 - 0.75	13 - 19	Single	24	610	1,792	810
ZCS1997	0.75 - 1.00	19 - 25	Single	28	710	4,480	2,030
ZCS1998	1.00 - 1.50	25 - 38	Single	32	815	6,272	2,845
ZCS1999	1.50 - 2.00	38 - 50	Double	36	915	8,960	4,065
ZCS2000	2.00 - 2.50	50 - 63	Double	42	1,065	8,960	4,065
ZCS2001	2.50 - 3.50	63 - 89	Double	48	1,220	10,752	4,875
ZCS2002	3.50 - 4.50	89 - 115	Double	54	1,370	12,544	5,690
ZCS2003	4.50 - 5.50	115 - 140	Double	54	1,370	12,544	5,690
ZCS11923	6.50 - 7.50	165 - 191	Double	120	3,048	12,544	5,690

Ideal for joining two cables to form a continuous loop. Typical application: replacement of lift cables, where the old cable would be attached to the new one, and the cable then fed around with ease. Also used to temporarily splice cable and conductor where torsion forces are NOT an issue. Torsion should be released prior to splicing. Where torsion is present a swivel and two grips should be used.

FIBRE OPTIC CABLE GRIP



Slingco Part No.	Range		Lattice Length		Overall Length		Approx. Break Load	
	in	mm	in	mm	in	mm	lb	kg
ZCS2008	0.11 - 0.23	2.5 - 5.6	11	265	18	455	950	431
ZCS2009	0.21 - 0.36	5.3 - 9.2	15	370	22	560	1,650	748
ZCS2010	0.32 - 0.49	8.1 - 12.5	19	470	27	690	2,200	998
ZCS2011	0.42 - 0.62	10.7 - 15.8	20	515	29	735	2,750	1,247
ZCS2012	0.53 - 0.75	13.5 - 19.1	23	595	32	815	3,700	1,678
ZCS2013	0.64 - 0.88	16.3 - 22.4	25	645	34	865	4,250	1,928
ZCS2014	0.75 - 1.00	19.1 - 25.5	27	720	37	940	4,250	1,928

Dual weave design from galvanised wire rope. Used for the installation of fibre optic cables for either overhead or underground applications. Made of galvanised steel.

SLINGCO NON-METALLIC ARAMID CABLE GRIPS

FOR PULLING CABLE IN MANY INDUSTRIAL & COMMERCIAL PROJECTS



Slingco's Non-Metallic Aramid Cable Grip Features:

- Break loads similar to steel cable grips
- Lightweight
- No more frayed grip wires
- UV Resistant and strong enough to last in salt water, pollutants, and underground
- We can create custom grips to meet your specifications

Slingco's line of Non-Metallic Aramid Cable Grips are ideal for use in fiber optic cable installation operations, offshore applications, or for a multitude of uses in the utilities industry.

These grips are made of a high-strength, non-metallic aramid fiber, with UV protective coating, and now feature an improved weight to break ratio. They are suitable for pulling both single cable and multiple cable bundles.

Thanks to the non-metallic material, these grips are easy to work with even without gloves. The woven mesh material also offers

a non-metallic, non-conductive alternative to steel grips.

We have many different styles of Non-Metallic Aramid Cable Grips for your project, such as Single Eye, Double Eye, Offset Eye, Lace Up, Mining Grips, and our new Single Eye Double Weave Grips made of ultra flex aramid material. We can also work with you to customize an Aramid Cable Grip to match any particular project specifications.

Call your Slingco Account Manager today and they will help you select the right grip for your project!

NS TYPE - SINGLE EYE ARAMID CABLE GRIP



Single Eye Single Weave Non-Metallic Cable Grip



Single Eye Double Weave Non-Metallic Cable Grip

Slingco Part No.	Range		Lattice Length		Approx. Break Load	
	in	mm	in	mm	lb	kg
SINGLE EYE SINGLE WEAVE NON-METALLIC CABLE GRIP						
ZCS1040	0.38 - 0.75	10 - 20	21	552	2,460	1,115
ZCS1022	0.75 - 1.25	20 - 30	21	523	3,580	1,620
ZCS2923	1.00 - 1.50	25 - 38	23	573	3,580	1,620
ZCS1041	1.25 - 1.50	30 - 40	25	642	4,920	2,230
ZCS1042	1.50 - 2.00	40 - 50	19	485	5,820	2,640
SINGLE EYE DOUBLE WEAVE NON-METALLIC CABLE GRIP						
ZCS1023	1.25 - 1.50	30 - 40	25	642	9,860	4,470
ZCS1024	1.50 - 2.00	40 - 50	21	523	11,880	5,390
ZCS1179	2.00 - 2.50	50 - 65	25	636	15,900	7,210
ZCS1180	2.50 - 3.00	65 - 80	36	908	15,900	7,210
ZCS1181	3.00 - 4.00	80 - 100	40	1,029	15,900	7,210
ZCS4079	3.94 - 4.92	100 - 125	125	3,168	15,900	7,212
SINGLE EYE DOUBLE WEAVE HIGH STRENGTH NON-METALLIC GRIP						
ZCS13054	4.00 - 5.00	102 - 127	118	2,992	45,500	20,638

Slingco Part No.	Range		Colour code	Approx. Break Load	
	in	mm		lb	kg
ULTRA-FLEX SINGLE EYE DOUBLE WEAVE NON-METALLIC CABLE GRIP					
ZCS09336	0.63 - 0.75	16 - 19	Yellow	5,000	2,267
ZCS09337	0.75 - 1.00	19 - 25	Red	6,000	2,721
ZCS09338	1.00 - 1.25	25 - 32	Blue	6,000	2,721
ZCS09339	1.25 - 1.50	32 - 38	White	6,000	2,721

ND TYPE - DOUBLE EYE ARAMID CABLE GRIP



Slingco Part No.	Range		Lattice Length		Approx. Break Load	
	in	mm	in	mm	lb	kg
DOUBLE EYE SINGLE WEAVE NON-METALLIC GRIP						
ZCS1148	0.38 - 0.75	10 - 20	22	552	2,460	1,115
ZCS1176	0.75 - 1.25	20 - 30	21	523	3,580	1,620
ZCS2922	1.00 - 1.50	25 - 38	23	573	3,580	1,620
ZCS1177	1.25 - 1.50	30 - 40	25	642	4,920	2,230
ZCS1178	1.50 - 2.00	40 - 50	19	487	5,820	2,640
DOUBLE EYE DOUBLE WEAVE NON-METALLIC GRIP						
ZCS1182	1.25 - 1.50	30 - 40	25	642	9,860	4,472
ZCS1183	1.50 - 2.00	40 - 50	26	667	11,880	5,389
ZCS1184	2.00 - 2.50	50 - 65	25	636	15,900	7,212
ZCS1185	2.50 - 3.00	65 - 80	30	762	15,900	7,212
ZCS1186	3.00 - 4.00	80 - 100	32	800	15,900	7,212
ZCS3813	4.00 - 5.00	102 - 127	61	1,540	15,900	7,212

NO TYPE - OFFSET EYE ARAMID CABLE GRIP



Single Offset Eye Single Weave Non-Metallic Grip

Slingco Part No.	Range		Lattice Length		Approx. Break Load	
	in	mm	in	mm	lb	kg
SINGLE OFFSET EYE SINGLE WEAVE NON-METALLIC GRIP						
ZCS2810	0.38 - 0.75	10-20	21	525	2,460	1,115
ZCS2811	0.75 - 1.25	20 - 30	21	525	3,580	1,620
ZCS2921	1.00 - 1.50	25 - 38	23	573	3,580	1,620
ZCS2812	1.25 - 1.50	30 - 40	25	642	4,920	2,230
ZCS2813	1.50 - 2.00	40 - 50	21	525	5,820	2,640
SINGLE OFFSET EYE DOUBLE WEAVE NON-METALLIC GRIP						
ZCS09342	0.5 - 1.00	13 - 25	39	990	8,093	3,671
ZCS2814	1.25 - 1.50	30 - 38	34	864	9,860	4,470
ZCS2815	1.50 - 2.00	38 - 50	25	635	11,880	5,390
ZCS2816	2.00 - 2.50	50 - 65	25	635	15,900	7,210
ZCS2817	2.50 - 3.00	65 - 80	26	660	15,900	7,210
ZCS2818	3.00 - 4.00	80 - 100	34	864	15,900	7,210
SINGLE OFFSET EYE EXTENDED EYE 12" NON-METALLIC GRIP						
ZCS7053	0.50 - 0.63	13 - 16	24	600	800	363
ZCS7054	0.63 - 0.74	16 - 19	24	600	1,000	454
ZCS7055	0.75 - 1.00	19 - 25	24	600	1,200	544
ZCS7056	1.00 - 1.25	25 - 32	24	600	1,200	544
SINGLE OFFSET EYE LACE UP NON-METALLIC CABLE GRIP						
ZCS09323	0.63 - 1.00	65 - 76	59	1,499	13,000	5,896
ZCS10476	3.00 - 3.50	76 - 102	30	762	5,000	2,268
DOUBLE OFFSET EYE NON-METALLIC CABLE GRIP						
ZCS8176	2.50 - 3.00	65 - 76	39	991	8,000	3,629
ZCS09959	2.50 - 3.00	65 - 76	36	914	9,000	4,082
ZCS6823	3.00 - 4.00	76 - 102	33	838	9,000	4,082



Single Offset Eye Lace Up Non-Metallic Cable Grip



Double Offset Eye Non-Metallic Cable Grip



SUBSEA MARINE GRIPS

These speciality grips are extremely heavy duty and suitable for large underwater pulls, plus other applications in the subsea and renewables industries. Galvanised steel construction with aluminium ferrules. Other materials in stainless steel and non-metallic Aramid are available on request.

Applications include array and export cable installation.

Available in single eye, double eye lace up and double eye with or without thimbles. Sizes range from 3.5 to over 20 inches.



Slingco Part No. FLEX Eye	Slingco Part No. THIMBLE Eye	Range		Lattice Length		Approx. Break Load		Lattice Material
		in	mm	in	mm	lb	kg	
SINGLE EYE								
ZCS12740-2M	ZCS12740-THI-2M	3.5 - 5	90 - 125	78.75	2,000	110,230	50,000	Galv.
ZCS12740-2.5M	ZCS740-THI-2.5M	3.5 - 5	90 - 125	98.5	2,500	110,230	50,000	Galv.
ZCS12740-3M	ZCS12740-THI-3M	3.5 - 5	90 - 125	118	3,000	110,230	50,000	Galv.
ZCS3525	ZCS3525-THI	4 - 5	102 - 127	78.75	2,005	110,310	45,500	Galv.
ZCS12741-2.5M	ZCS12741-THI-2.5M	4.3 - 5.7	110 - 145	98.5	2,500	121,250	55,000	Galv.
ZCS12741-3M	ZCS12741-THI-3M	4.3 - 5.7	110 - 145	118	3,000	121,250	55,000	Galv.
ZCS3526	ZCS3526-THI	5 - 6	127 - 152	71.7	1,821	104,720	47,500	Galv.
ZCS12742	ZCS12742-THI	5.1 - 6.7	130 - 172	118	3,000	143,300	65,000	Galv.
ZCS3527	ZCS3527-THI	6 - 8	152 - 203	66	1,678	110,230	50,000	Galv.
ZCS12743	ZCS12743-THI	6.1 - 8.25	155 - 210	118	3,000	154,300	70,000	Galv.
ZCS12744	ZCS12744-THI	7.67 - 9.8	195 - 250	118	3,000	187,393	85,000	Galv.
ZCS3528	ZCS3528-THI	8 - 10	203 - 255	80.5	2,047	138,900	63,000	Galv.
ZCS12745	ZCS12745-THI	9.25 - 11.22	235 - 285	118	3,000	198,400	90,000	Galv.
ZCS3529	ZCS3529-THI	10 - 12	255 - 305	76.5	1,945	138,900	63,000	Galv.
ZCS3530	ZCS3530-THI	12 - 14	305 - 355	97	2,460	138,000	62,600	Galv.
DOUBLE EYE								
ZCS12754-2M	ZCS12754-THI-2M	3.5 - 5	90 - 125	78.75	2,000	121,250	55,000	Galv.
ZCS12754-2.5M	ZCS12754-THI-2.5M	3.5 - 5	90 - 125	98.5	2,500	121,250	55,000	Galv.
ZCS12754-3M	ZCS12754-THI-3M	3.5 - 5	90 - 125	118	3,000	121,250	55,000	Galv.
ZCS3535	ZCS3535-THI	4 - 5	102 - 127	78.75	2,005	124,560	56,500	Galv.
ZCS12755-2.5M	ZCS12755-THI-2.5M	4.3 - 5.7	110 - 145	98.5	2,500	132,275	60,000	Galv.
ZCS12755-3M	ZCS12755-THI-3M	4.3 - 5.7	110 - 145	118	3,000	132,275	60,000	Galv.
ZCS3536	ZCS3536-THI	5 - 6	127 - 152	71.7	1,821	124,560	56,500	Galv.
ZCS12756	ZCS12756-THI	5.1 - 6.7	130 - 172	118	3,000	165,350	75,000	Galv.
ZCS3537	ZCS3537-THI	6 - 8	152 - 203	64.3	1,633	126,765	57,500	Galv.
ZCS12757	ZCS12757-THI	6.1 - 8.25	155 - 210	118	3,000	176,370	80,000	Galv.
ZCS12758	ZCS12758-THI	7.67 - 9.8	195 - 250	118	3,000	198,400	90,000	Galv.
ZCS3538	ZCS3538-THI	8 - 10	203 - 255	80.5	2,047	156,528	71,000	Galv.
ZCS12759	ZCS12759-THI	9.25 - 11.22	235 - 285	118	3,000	209,439	95,000	Galv.
ZCS3539	ZCS3539-THI	10 - 12	255 - 305	76.5	1,945	156,528	71,000	Galv.
ZCS3540	ZCS3540-THI	12 - 14	305 - 355	97	2,460	156,528	71,000	Galv.
ZCS3540-3M	ZCS3540-THI-3M	12 - 14	305 - 355	118	3,000	156,528	71,000	Galv.
LACE UP								
ZCS12760	ZCS12760-THI	3.5 - 5	90 - 125	78.75	2,000	110,230	50,000	Galv.
ZCS3545	ZCS3545-THI	4 - 5	102 - 127	78.75	2,005	105,822	48,000	Galv.
ZCS12761	ZCS12761-THI	4.3 - 5.7	110 - 145	98.5	2,500	110,230	50,000	Galv.
ZCS3546	ZCS3546-THI	5 - 6	127 - 152	71.7	1,821	105,822	48,000	Galv.
ZCS12762	ZCS12762-THI	5.1 - 6.7	130 - 172	118	3,000	154,300	70,000	Galv.
ZCS3547	ZCS3547-THI	6 - 8	152 - 203	66	1,678	105,822	48,000	Galv.
ZCS12763	ZCS12763-THI	6.1 - 8.25	155 - 210	118	3,000	154,300	70,000	Galv.
ZCS12764	ZCS12764-THI	7.67 - 9.8	195 - 250	118	3,000	198,000	90,000	Galv.
ZCS3548		8 - 10	203 - 255	80.5	2,047	132,277	60,000	Galv.
	ZCS3548-THI	8 - 10	203 - 255	98.5	2,500	132,277	60,000	Galv.
ZCS12765	ZCS12765-THI	9.25 - 11.22	235 - 285	118	3,000	198,000	90,000	Galv.
ZCS3549		10 - 12	255 - 305	76.5	1,945	132,277	60,000	Galv.
	ZCS3549-THI	10 - 12	255 - 305	98.5	2,500	132,277	60,000	Galv.
ZCS3550	ZCS3550-THI	12 - 14	305 - 355	118.35	3,006	132,277	60,000	Galv.

WIND TURBINE SUPPORT GRIP - HEAVY DUTY THIMBLE OFFSET EYE

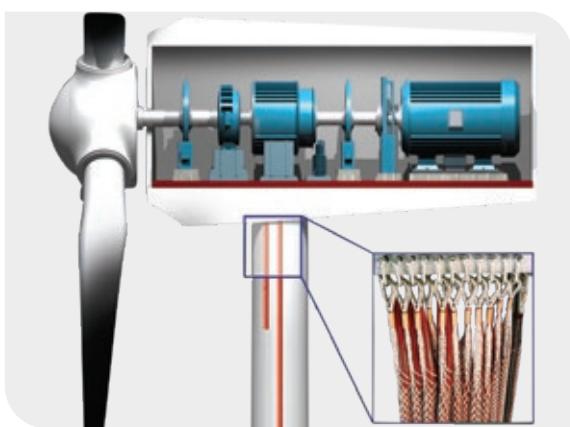


Slingco has developed a range of cable grips tailored for the renewable energy sector for use in:

- Cable installation – on-shore and off-shore
- Cable support inside wind turbines
- Cable management

For wind turbines, special features have been adapted to allow for minimal contact with the actual cable while still allowing excellent working loads and cable support.

The Slingco Wind Turbine Support Grip is manufactured from 316 Stainless Steel and provides cable support and control inside the wind turbine. It features rounded copper ferrules and offers reduced cable contact for high vibration environments. Custom grips can be adapted to meet any requirement.



Slingco Part No.	Range		Lattice Length		Approx. Break Load	
	in	mm	in	mm	lb	kg
ZCS2844	0.31 - 0.40	8 - 10	25	635	1,485	670
ZCS2845	0.40 - 0.60	10 - 15	26	660	2,295	1,040
ZCS2846	0.60 - 0.80	15 - 20	28	711	2,900	1,315
ZCS2847	0.80 - 0.99	20 - 25	29	736	4,550	2,080
ZCS2848	1.0 - 1.19	25 - 30	29	736	5,450	2,475
ZCS2849	1.20 - 1.58	30 - 40	31	787	7,800	3,575
ZCS2850	1.58 - 1.98	40 - 50	39	990	10,750	4,890
ZCS2851	1.98 - 2.37	50 - 60	39	990	10,750	4,890
ZCS2852	2.38 - 2.77	60 - 70	47	1194	14,000	6,420
ZCS2853	2.77 - 3.55	70 - 90	47	1194	14,000	6,420
ZCS2854	3.55 - 4.33	90 - 110	47	1194	18,000	8,165

EXTENDED THIMBLE EYE HEAVY DUTY DOUBLE WEAVE STAINLESS STEEL CABLE GRIP



Slingco Part No.	Range		Lattice Length		Eye Extension Length		Approx. Break Load	
	in	mm	in	mm	in	mm	lb	kg
ZCS2870	0.39 - 0.60	10 - 15	20	500	20	350	2,295	1,040
ZCS2871	0.60 - 0.80	15 - 20	20	500	20	350	2,903	1,315
ZCS2872	0.80 - 0.99	20 - 25	20	500	20	350	4,590	2,082
ZCS2873	1.0 - 1.19	25 - 30	20	500	20	350	5,468	2,480
ZCS2874	1.20 - 1.58	30 - 40	20	500	20	350	7,898	3,582

SINGLE EYE CLOSED MESH CABLE SUPPORT GRIP

Slingco closed mesh support grip in Stainless Steel. Closed mesh for when end of cable is available.



Slingco Part No.	Range		Lattice Length		Approx. Break Load	
	in	mm	in	mm	lb	kg
ZCS1893	0.50 - 0.63	12 - 16	9.7	247	567	255
ZCS1894	0.63 - 0.75	16 - 19	9.7	247	890	400
ZCS1895	0.75 - 1.00	19 - 25	13	331	1,040	470
ZCS1896	1.00 - 1.25	25 - 31	13.5	344	1,700	770
ZCS1897	1.25 - 1.50	31 - 38	15	382	1,700	770
ZCS1898	1.50 - 1.75	38 - 44	16.5	420	1,700	770
ZCS1899	1.75 - 2.00	44 - 50	20	509	2,300	1,040
ZCS1900	2.00 - 2.50	50 - 63	21	535	3,400	1,540
ZCS1901	2.50 - 3.00	63 - 76	24	611	3,400	1,540
ZCS1902	3.00 - 3.50	76 - 89	26	662	5,000	2,265
ZCS1903	3.50 - 4.00	89 - 102	29	738	5,000	2,265

SINGLE EYE SPLIT MESH LACE CLOSING CABLE SUPPORT GRIP

In Stainless Steel. Split mesh is for when end of cable is not available.



Slingco Part No.	Range		Lattice Length		Approx. Break Load	
	in	mm	in	mm	lb	kg
ZCS1904	0.50 - 0.63	12 - 16	9.7	247	567	255
ZCS1905	0.63 - 0.75	16 - 19	9.7	247	890	358
ZCS1906	0.75 - 1.00	19 - 25	13	331	1,040	470
ZCS1907	1.00 - 1.25	25 - 31	13.5	344	1,700	770
ZCS1908	1.25 - 1.50	31 - 38	15	382	1,700	770
ZCS1909	1.50 - 1.75	38 - 44	16.5	420	1,700	770
ZCS1910	1.75 - 2.00	44 - 50	20	509	2,300	1,040
ZCS1911	2.00 - 2.50	50 - 63	21	535	3,400	1,540
ZCS1912	2.50 - 3.00	63 - 76	24	611	3,400	1,540
ZCS1913	3.00 - 3.50	76 - 89	26	662	5,000	2,265
ZCS1914	3.50 - 4.00	89 - 102	29	738	5,000	2,265

SINGLE EYE SPLIT MESH ROD CLOSING CABLE SUPPORT GRIP

Similar to the lace up grip, in Stainless Steel, but in this design it is closed by inserting a metal rod down the length of the grip. For when end of cable is not available.



Slingco Part No.	Range		Lattice Length		Approx. Break Load	
	in	mm	in	mm	lb	kg
ZCS2362	0.50 - 0.63	12 - 16	9.7	247	567	255
ZCS2363	0.63 - 0.75	16 - 19	9.7	247	890	400
ZCS2162	0.75 - 1.00	19 - 25	13	331	1,040	470
ZCS2163	1.00 - 1.25	25 - 31	13.5	344	1,700	770
ZCS2164	1.25 - 1.50	31 - 38	15	382	1,700	770
ZCS2165	1.50 - 1.75	38 - 44	16.5	420	1,700	770
ZCS2166	1.75 - 2.00	44 - 50	20	509	2,300	1,040
ZCS2167	2.00 - 2.50	50 - 63	21	535	3,400	1,540
ZCS2168	2.50 - 3.00	63 - 76	24	611	3,400	1,540
ZCS2169	3.00 - 3.50	76 - 89	26	662	5,000	2,265
ZCS2372	3.50 - 4.00	89 - 102	29	738	5,000	2,265

DOUBLE EYE CLOSED MESH CABLE SUPPORT GRIP

Double eye closed mesh support grip in stainless steel. Two eyes for two connect/support points. Closed mesh for when end of cable is available.



Slingco Part No.	Range		Lattice Length		Lattice Material	Approx. Break Load	
	in	mm	in	mm		lb	kg
ZCS2038	0.50 - 0.63	12 - 16	9.7	247	304 Stainless	512	230
ZCS2039	0.63 - 0.75	16 - 19	9.7	247	304 Stainless	740	335
ZCS2040	0.75 - 1.00	19 - 25	13	331	304 Stainless	1,000	450
ZCS2041	1.00 - 1.25	25 - 31	15	344	304 Stainless	1,540	695
ZCS2042	1.25 - 1.50	31 - 38	16.5	382	304 Stainless	1,540	695
ZCS2043	1.50 - 1.75	38 - 44	15	420	304 Stainless	2,010	910
ZCS2044	1.75 - 2.00	44 - 50	21	509	304 Stainless	3,230	1,465
ZCS2045	2.00 - 2.50	50 - 63	24	535	304 Stainless	3,230	1,465
ZCS2046	2.50 - 3.00	63 - 76	26	611	304 Stainless	4,000	1,815
ZCS2047	3.00 - 3.50	76 - 89	29	662	304 Stainless	4,000	1,815
ZCS2048	3.50 - 4.00	89 - 102	29	738	304 Stainless	4,001	1,815
ZCS6404	4.00 - 4.50	102 - 114	30	762	304 Stainless	4,000	1,815
ZCS6405	4.50 - 5.00	114 - 127	30	762	304 Stainless	4,000	1,815
ZCS6406	5.00 - 5.50	127 - 140	30	762	304 Stainless	4,000	1,815

DOUBLE EYE SPLIT MESH LACE CLOSING CABLE SUPPORT GRIP

Double eye split mesh lace closing, in Stainless Steel, for secure attachment and support where the cable end is not accessible.



Slingco Part No.	Range		Lattice Length		Lattice Material	Approx. Break Load	
	in	mm	in	mm		lb	kg
ZCS2998	0.50 - 0.63	12 - 16	10	254	304 Stainless	530	240
ZCS2999	0.63 - 0.75	16 - 19	10	254	304 Stainless	790	360
ZCS3000	0.75 - 1.00	19 - 25	13	330	304 Stainless	1,020	460
ZCS3001	1.00 - 1.25	25 - 31	14	355	304 Stainless	1,610	730
ZCS3002	1.25 - 1.50	31 - 38	15	381	304 Stainless	1,610	730
ZCS3003	1.50 - 1.75	38 - 44	17	432	304 Stainless	1,610	730
ZCS3004	1.75 - 2.00	44 - 50	19	482	304 Stainless	2,150	975
ZCS3005	2.00 - 2.50	50 - 63	21	533	304 Stainless	3,260	1,480
ZCS3006	2.50 - 3.00	63 - 76	23	584	304 Stainless	3,260	1,480
ZCS3007	3.00 - 3.50	76 - 89	25	635	304 Stainless	4,900	2,222
ZCS3008	3.50 - 4.00	89 - 102	27	685	304 Stainless	4,900	2,222

DOUBLE EYE SPLIT MESH ROD CLOSING CABLE SUPPORT GRIP

Double eye split mesh rod closing, in Stainless Steel, for secure attachment and support where the cable end is not accessible.



Slingco Part No.	Range		Lattice Length		Lattice Material	Approx. Break Load	
	in	mm	in	mm		lb	kg
ZCS3009	0.50 - 0.63	12 - 16	8.5	216	304 Stainless	790	355
ZCS3010	0.63 - 0.75	16 - 19	8.5	216	304 Stainless	790	355
ZCS3011	0.75 - 1.00	19 - 25	10.5	266	304 Stainless	1,020	460
ZCS3012	1.00 - 1.25	25 - 31	12.5	317	304 Stainless	1,610	730
ZCS3013	1.25 - 1.50	31 - 38	14.5	368	304 Stainless	1,610	730
ZCS3014	1.50 - 1.75	38 - 44	15.5	394	304 Stainless	1,610	730
ZCS3015	1.75 - 2.00	44 - 50	16.5	419	304 Stainless	2,150	975
ZCS3016	2.00 - 2.50	50 - 63	19.5	495	304 Stainless	3,260	1,475
ZCS3017	2.50 - 3.00	63 - 76	21.5	546	304 Stainless	3,260	1,475
ZCS3018	3.00 - 3.50	76 - 89	23.5	597	304 Stainless	5,750	2,600
ZCS3019	3.50 - 4.00	89 - 102	25.5	648	304 Stainless	5,750	2,600

OFFSET EYE CLOSED MESH CABLE SUPPORT GRIP

The offset eye grip is designed to support the cable weight as it hangs vertically or horizontally. Closed mesh for when end of cable is available.



Slingco Part No.	Range		Lattice Length		Approx. Break Load	
	in	mm	in	mm	lb	kg
ZCS1915	0.50 - 0.63	12 - 16	9.7	247	512	230
ZCS1916	0.63 - 0.75	16 - 19	9.7	247	740	335
ZCS1917	0.75 - 1.00	19 - 25	13	331	1,000	450
ZCS1918	1.00 - 1.25	25 - 31	13.5	344	1,540	695
ZCS1919	1.25 - 1.50	31 - 38	15	382	1,540	695
ZCS1920	1.50 - 1.75	38 - 44	16.5	420	1,540	910
ZCS1921	1.75 - 2.00	44 - 50	20	509	2,010	1,465
ZCS1922	2.00 - 2.50	50 - 63	21	535	3,230	1,465
ZCS1923	2.50 - 3.00	63 - 76	24	611	3,230	1,815
ZCS1924	3.00 - 3.50	76 - 89	26	662	4,000	1,815
ZCS1925	3.50 - 4.00	89 - 102	29	738	4,000	1,815
ZCS6408	4.00 - 4.50	102 - 114	28	711	4,000	1,815
ZCS6409	4.50 - 5.00	114 - 127	28	711	4,000	1,815
ZCS6410	5.00 - 5.50	127 - 140	28	711	4,000	1,815

OFFSET EYE SPLIT MESH LACE CLOSING CABLE SUPPORT GRIP

This grip, in Stainless Steel, is ideal for several support points along the same cable when the cable ends are not accessible.



Slingco Part No.	Range		Lattice Length		Approx. Break Load	
	in	mm	in	mm	lb	kg
ZCS1926	0.50 - 0.63	12 - 16	10	254	500	225
ZCS1927	0.63 - 0.75	16 - 19	10	254	750	340
ZCS1928	0.75 - 1.00	19 - 25	13	330	950	430
ZCS1929	1.00 - 1.25	25 - 31	14	355	1,500	680
ZCS1930	1.25 - 1.50	31 - 38	15	381	1,500	680
ZCS1931	1.50 - 1.75	38 - 44	17	432	1,500	680
ZCS1932	1.75 - 2.00	44 - 50	19	482	2,000	905
ZCS1933	2.00 - 2.50	50 - 63	21	533	2,150	975
ZCS1934	2.50 - 3.00	63 - 76	23	584	2,150	975
ZCS1935	3.00 - 3.50	76 - 89	25	635	3,800	1,720
ZCS1936	3.50 - 4.00	89 - 102	27	685	3,800	1,720

OFFSET EYE SPLIT MESH ROD CLOSING CABLE SUPPORT GRIP

Ideal for several support points along the same cable when the cable ends are not accessible. Made from Stainless Steel.



Slingco Part No.	Range		Lattice Length		Approx. Break Load	
	in	mm	in	mm	lb	kg
ZCS3031	0.50 - 0.63	12 - 16	7	178	500	225
ZCS3032	0.63 - 0.75	16 - 19	9	229	750	340
ZCS3033	0.75 - 1.00	19 - 25	10	254	950	430
ZCS3034	1.00 - 1.25	25 - 31	12	305	1,500	680
ZCS3035	1.25 - 1.50	31 - 38	14	359	1,500	680
ZCS3036	1.50 - 1.75	38 - 44	15	381	1,500	680
ZCS3037	1.75 - 2.00	44 - 50	16	406	2,000	905
ZCS3038	2.00 - 2.50	50 - 63	19	483	3,100	975
ZCS3039	2.50 - 3.00	63 - 76	20	508	3,100	975
ZCS3040	3.00 - 3.50	76 - 89	21	533	4,300	1,720
ZCS3041	3.50 - 4.00	89 - 102	21	533	4,900	1,720



For swivels see page 29.

UNIVERSAL EYE CLOSED MESH CABLE SUPPORT GRIP

Fitted with an adjustable eye for easy and secure attachment, where the end of the cable can be inserted in to the support grip. Made from Stainless Steel.



Slingco Part No.	Range		Lattice Length		Approx. Break Load	
	in	mm	in	mm	lb	kg
ZCS2664	0.50 - 0.63	12 - 16	10	254	530	240
ZCS2665	0.63 - 0.75	16 - 19	10	254	790	360
ZCS2666	0.75 - 1.00	19 - 25	13	330	1,020	460
ZCS2667	1.00 - 1.25	25 - 31	14	355	1,610	730
ZCS2324	1.25 - 1.50	31 - 38	15	381	1,610	730
ZCS2668	1.50 - 1.75	38 - 44	17	432	1,610	730
ZCS2669	1.75 - 2.00	44 - 50	19	483	2,150	975
ZCS2670	2.00 - 2.50	50 - 63	21	533	3,260	1,480
ZCS2671	2.50 - 3.00	63 - 76	23	584	3,260	1,480

UNIVERSAL EYE SPLIT MESH LACE CLOSING CABLE SUPPORT GRIP

Fitted with an adjustable eye for easy and secure attachment, where the end of the cable is not accessible. Made from Stainless Steel.



Slingco Part No.	Range		Lattice Length		Approx. Break Load	
	in	mm	in	mm	lb	kg
ZCS2672	0.50 - 0.63	12 - 16	10	254	530	240
ZCS2673	0.63 - 0.75	16 - 19	10	254	790	360
ZCS2674	0.75 - 1.00	19 - 25	13	330	1,020	460
ZCS2675	1.00 - 1.25	25 - 31	14	355	1,610	730
ZCS2676	1.25 - 1.50	31 - 38	15	381	1,610	730
ZCS2677	1.50 - 1.75	38 - 44	17	432	1,610	730
ZCS2678	1.75 - 2.00	44 - 50	19	483	2,150	975
ZCS2679	2.00 - 2.50	50 - 63	21	533	3,260	1,480
ZCS2680	2.50 - 3.00	63 - 76	23	584	3,280	1,480
ZCS2681	3.00 - 3.50	76 - 89	25	635	4,900	2,222
ZCS2682	3.50 - 4.00	89 - 102	27	686	4,900	2,222

UNIVERSAL EYE SPLIT MESH ROD CLOSING CABLE SUPPORT GRIP

Fitted with an adjustable eye for easy and secure attachment, where the end of the cable is not accessible. Made from Stainless Steel.



Slingco Part No.	Range		Lattice Length		Approx. Break Load	
	in	mm	in	mm	lbs	kg
ZCS2683	0.50 - 0.63	12 - 16	8.5	216	530	240
ZCS2684	0.63 - 0.75	16 - 19	8.5	216	790	360
ZCS2685	0.75 - 1.00	19 - 25	10.5	267	1,020	460
ZCS2686	1.00 - 1.25	25 - 31	12.5	317	1,610	730
ZCS2687	1.25 - 1.50	31 - 38	14.5	368	1,610	730
ZCS2688	1.50 - 1.75	38 - 44	15.5	394	1,610	730

BUS DROP GRIPS



Lightweight easy to use Bus Drop Grips are perfect for supporting cables in such applications as Data Centers, Control Centers and other wiring to rack applications.

Slingco Part No	Range		Wire Material	Eye length		Approx. Break Load	
	in	mm		in	mm	lb	kg
ZCS6969	0.22 - 0.32	6.1 - 8.1	Galvanised	3.5	88.9	350	158
ZCS6970	0.30 - 0.43	8.1 - 10.9	Galvanised	4	101.6	450	204
ZCS6971	0.41 - 0.56	10.9 - 14.2	Galvanised	4.75	120.6	550	249
ZCS6972	0.53 - 0.73	14.2 - 18.5	Galvanised	6	152.4	1,000	453
ZCS6973	0.70 - 0.85	18.5 - 21.6	Galvanised	6.75	171.4	1,400	635
ZCS6974	0.82 - 1.00	21.6 - 25.4	Galvanised	8	203.2	1,400	635
ZCS6975	0.96 - 1.25	25.4 - 31.7	Galvanised	9.5	241.3	1,500	680
ZCS09744	0.22 - 0.32	6.1 - 8.1	304 Stainless Steel	3.5	88.9	100	45.36
ZCS09745	0.30 - 0.43	8.1 - 10.9	304 Stainless Steel	4	101.6	260	117.9
ZCS09746	0.41 - 0.56	10.9 - 14.2	304 Stainless Steel	4.75	120.6	550	249
ZCS09717	0.53 - 0.73	14.2 - 18.5	304 Stainless Steel	6	152.4	1,000	453
ZCS09747	0.70 - 0.85	18.5 - 21.6	304 Stainless Steel	6.75	171.4	1,400	635
ZCS09748	0.82 - 1.00	21.6 - 25.4	304 Stainless Steel	8.0	203.2	1,400	635
ZCS09749	0.96 - 1.25	25.4 - 31.7	304 Stainless Steel	9.5	241.3	1,400	680
ZCS09968	0.41 - 0.56	10.9 - 14.2	ALL 316 Stainless Steel	4.75	120.6	550	249
ZCS09969	0.53 - 0.73	14.2 - 18.5	ALL 316 Stainless Steel	6	152.4	1,000	453
ZCS10400	0.70 - 0.85	18.5 - 21.6	ALL 316 Stainless Steel	6.75	171.4	1,400	635
ZCS10401	0.82 - 1.00	21.6 - 25.4	ALL 316 Stainless Steel	8.0	203.2	1,400	635

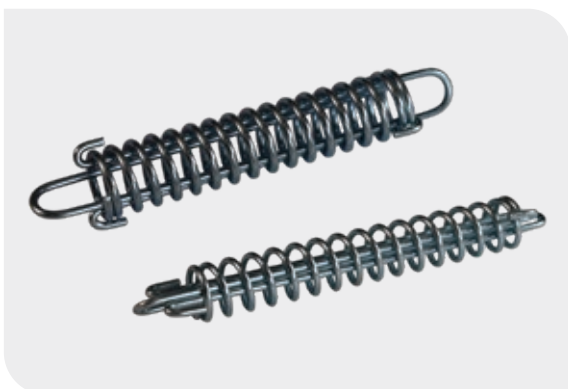
SERVICE DROP GRIPS



Use these grips to support cables in manufacturing, industrial and open space environments. The extended eye allows for easy installation and hanging from conveniently placed connection points. Also great for Control room and wire to rack applications.

Slingco Part No	Range		Wire Material	Eye length		Approx. Break Load	
	in	mm		in	mm	lb	kg
ZCS7684	0.22 - 0.32	5.6 - 8.1	Galvanised	9	229	1,100	499
ZCS7685	0.30 - 0.43	7.6 - 10.9	Galvanised	9	229	1,100	499
ZCS7686	0.41 - 0.56	10.4 - 14.2	Galvanised	9	229	1,100	499
ZCS7687	0.53 - 0.73	13.5 - 18.5	Galvanised	9	229	1,100	499
ZCS7688	0.70 - 0.85	17.8 - 21.6	Galvanised	9	229	1,900	861
ZCS7689	0.82 - 1.00	20.8 - 25.4	Galvanised	9	229	1,900	861
ZCS7690	0.96 - 1.25	24.4 - 31.7	Galvanised	7	178	1,900	861
ZCS09733	0.22 - 0.32	5.6 - 8.1	304 Stainless Steel	9	229	650	294
ZCS09734	0.30 - 0.43	7.6 - 10.9	304 Stainless Steel	9	229	1,100	499
ZCS09735	0.41 - 0.56	10.4 - 14.2	304 Stainless Steel	9	229	1,100	499
ZCS09736	0.53 - 0.73	13.5 - 18.5	304 Stainless Steel	9	229	1,100	499
ZCS09737	0.70 - 0.85	17.8 - 21.6	304 Stainless Steel	9	229	1,900	861
ZCS09738	0.82 - 1.00	20.8 - 25.4	304 Stainless Steel	9	229	1,900	861
ZCS09739	0.96 - 1.25	24.4 - 31.7	304 Stainless Steel	7	178	1,900	861

SPRINGS



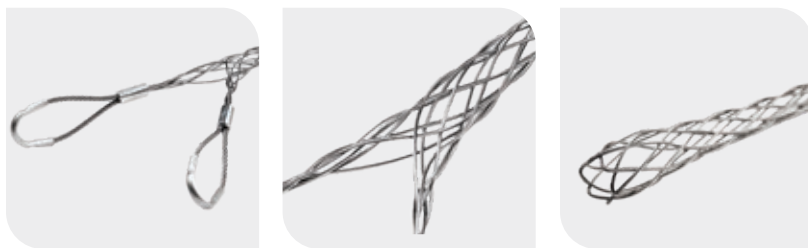
Support the dead weight of cables. Used in conjunction with support, service or bus drop grips. These safety springs relieve strain by dampening pull vibrations. Available in two working load strengths. The safety spring helps prevent pull outs. Avoid downtime and accidents from disconnected cables.

Can be used with any strain relief support grips. Attach grip eye to bottom of spring.

Slingco Part No.	Working Load (lb)		Diameter		Spring Length	
	lb	kg	in	mm	in	mm
ZCS8560	40	18.14	0.75	19.0	6.1	155
ZCS8561	80	36.28	1.00	25.4	6.1	155

HEAVY DUTY CABLE SUPPORT GRIPS

Heavy Duty support grips made from stainless steel are perfect for supporting heavier cable, conduit or any other cylindrical object. Often used by Utilities and Contractors to support cables transitioning from overhead to underground. One may support multiple cables in one grip. The overall diameter of the cable bundle should fit within the listed range.



HEAVY DUTY SUPPORT GRIPS - SINGLE EYE

Slingco Part No.	Range		Lattice Length		Lattice Material	Approx. Break Load	
	in	mm	in	mm		lb	kg
ZCS7065	0.50 - 0.63	13 - 16	10.4	265	Stainless Steel	1,370	621
ZCS7066	0.63 - 0.75	16 - 19	11.7	296	Stainless Steel	2,060	944
ZCS7067	0.75 - 1.00	19 - 25	13.6	346	Stainless Steel	2,060	944
ZCS7068	1.00 - 1.25	25 - 32	15.4	391	Stainless Steel	2,678	1,216
ZCS7069	1.25 - 1.50	32 - 38	17.4	441	Stainless Steel	4,490	2,037
ZCS7070	1.50 - 1.75	38 - 44	24.2	615	Stainless Steel	4,490	2,037
ZCS7071	1.75 - 2.00	44 - 51	23.6	600	Stainless Steel	5,000	2,269
ZCS7072	2.00 - 2.50	51 - 63	21.2	539	Stainless Steel	8,940	4,056
ZCS7073	2.50 - 3.00	63 - 76	21.2	538	Stainless Steel	8,940	4,056
ZCS7074	3.00 - 3.50	76 - 87	26.2	666	Stainless Steel	13,420	6,089
ZCS7075	3.50 - 4.00	87 - 102	31.1	790	Stainless Steel	13,420	6,089

HEAVY DUTY SUPPORT GRIPS - DOUBLE EYE

Slingco Part No.	Range		Lattice Length		Lattice Material	Approx. Break Load	
	in	mm	in	mm		lb	kg
ZCS3057	0.50 - 0.63	13 - 16	10.9	277	316 SS	1,370	621
ZCS3058	0.63 - 0.75	16 - 19	10.2	258	316 SS	2,080	944
ZCS3059	0.75 - 1.00	19 - 25	13.6	346	316 SS	2,080	944
ZCS7136	1.00 - 1.25	25 - 32	22	559	316 SS	2,670	1,211
ZCS7137	1.25 - 1.50	31 - 38	25.2	640	316 SS	4,490	2,037
ZCS7138	1.50 - 1.75	38 - 44	27	686	316 SS	4,490	2,037
ZCS7139	1.75 - 2.00	44 - 50	31	782	316 SS	5,000	2,268
ZCS7140	2.00 - 2.50	50 - 63	28	711	316 SS	8,940	4,056
ZCS7141	2.50 - 3.00	63 - 76	30	762	316 SS	8,940	4,056
ZCS7142	3.00 - 3.50	76 - 89	34	864	316 SS	12,000	5,445
ZCS7143	3.50 - 4.00	89 - 102	38	965	316 SS	12,000	5,445

HEAVY DUTY SUPPORT GRIPS - SINGLE EYE LACE-UP

Slingco Part No.	Range		Lattice Length		Lattice Material	Approx. Break Load	
	in	mm	in	mm		lb	kg
ZCS6907	0.50 - 0.63	13 - 16	11	277	Stainless Steel	1,370	621
ZCS6908	0.63 - 0.75	16 - 19	12	309	Stainless Steel	2,080	944
ZCS6909	0.75 - 1.00	19 - 25	14	345	Stainless Steel	2,080	944
ZCS6910	1.00 - 1.25	25 - 32	15	391	Stainless Steel	2,670	1,211
ZCS6911	1.25 - 1.50	32 - 38	16.5	417	Stainless Steel	4,490	2,037
ZCS6912	1.50 - 1.75	38 - 44	19.5	494	Stainless Steel	4,490	2,037
ZCS6913	1.75 - 2.00	44 - 51	21	537	Stainless Steel	5,000	2,269
ZCS6914	2.00 - 2.50	51 - 63	25	639	Stainless Steel	8,940	4,056
ZCS6915	2.50 - 3.00	63 - 76	25	623	Stainless Steel	8,940	4,056
ZCS6916	3.00 - 3.50	76 - 87	28	705	Stainless Steel	13,420	6,089
ZCS6917	3.50 - 4.00	87 - 102	36	924	Stainless Steel	13,420	6,089

HEAVY DUTY SUPPORT GRIPS - DOUBLE EYE LACE-UP

Slingco Part No.	Range		Lattice Length		Lattice Material	Approx. Break Load	
	in	mm	in	mm		lb	kg
ZCS7087	0.50 - 0.63	13 - 16	11	277	Stainless Steel	1,370	621
ZCS7088	0.63 - 0.75	16 - 19	12	309	Stainless Steel	2,080	944
ZCS7089	0.75 - 1.00	19 - 25	13	332	Stainless Steel	2,080	944
ZCS7090	1.00 - 1.25	25 - 32	15.5	391	Stainless Steel	2,670	1,211
ZCS7091	1.25 - 1.50	32 - 38	16.5	417	Stainless Steel	4,490	2,037
ZCS7092	1.50 - 1.75	38 - 44	23	589	Stainless Steel	4,490	2,037
ZCS7093	1.75 - 2.00	44 - 51	22	569	Stainless Steel	5,000	2,269
ZCS7094	2.00 - 2.50	51 - 63	26	654	Stainless Steel	8,940	4,056
ZCS7095	2.50 - 3.00	63 - 76	24.5	623	Stainless Steel	8,940	4,056
ZCS7096	3.00 - 3.50	76 - 87	29.5	749	Stainless Steel	13,420	6,089
ZCS7097	3.50 - 4.00	87 - 102	37.5	950	Stainless Steel	13,420	6,089

HEAVY DUTY SUPPORT GRIPS - SINGLE EYE ROD CLOSING

Slingco Part No.	Range		Lattice Length		Lattice Material	Approx. Break Load	
	in	mm	in	mm		lb	kg
ZCS7076	0.50 - 0.63	13 - 16	11	277	Stainless Steel	1,370	621
ZCS7077	0.63 - 0.75	16 - 19	12	309	Stainless Steel	2,080	944
ZCS7078	0.75 - 1.00	19 - 25	14	345	Stainless Steel	2,080	944
ZCS7079	1.00 - 1.25	25 - 32	15	391	Stainless Steel	2,670	1,211
ZCS7080	1.25 - 1.50	32 - 38	16.5	417	Stainless Steel	4,490	2,037
ZCS7081	1.50 - 1.75	38 - 44	19.5	494	Stainless Steel	4,490	2,037
ZCS7082	1.75 - 2.00	44 - 51	21	537	Stainless Steel	5,000	2,269
ZCS7083	2.00 - 2.50	51 - 63	27	654	Stainless Steel	8,940	4,056
ZCS7084	2.50 - 3.00	63 - 76	24.5	623	Stainless Steel	8,940	4,056
ZCS7085	3.00 - 3.50	76 - 87	27	693	Stainless Steel	13,420	6,089
ZCS7086	3.50 - 4.00	87 - 102	36	914	Stainless Steel	13,420	6,089

HEAVY DUTY SUPPORT GRIPS - DOUBLE EYE ROD CLOSING

Slingco Part No.	Range		Lattice Length		Lattice Material	Approx. Break Load	
	in	mm	in	mm		lb	kg
ZCS7098	0.50 - 0.63	13 - 16	11	277	Stainless Steel	1,370	621
ZCS7099	0.63 - 0.75	16 - 19	12	309	Stainless Steel	2,080	944
ZCS7100	0.75 - 1.00	19 - 25	14	351	Stainless Steel	2,080	944
ZCS7101	1.00 - 1.25	25 - 32	15	391	Stainless Steel	2,670	1,211
ZCS7102	1.25 - 1.50	32 - 38	16	417	Stainless Steel	4,490	2,037
ZCS7103	1.50 - 1.75	38 - 44	16.5	494	Stainless Steel	4,490	2,037
ZCS7104	1.75 - 2.00	44 - 51	17.5	537	Stainless Steel	5,000	2,269
ZCS7105	2.00 - 2.50	51 - 63	26	654	Stainless Steel	8,940	4,056
ZCS7106	2.50 - 3.00	63 - 76	25	623	Stainless Steel	8,940	4,056
ZCS7107	3.00 - 3.50	76 - 87	27	693	Stainless Steel	13,420	6,089
ZCS7108	3.50 - 4.00	87 - 102	36	914	Stainless Steel	13,420	6,089

DELUXE CORD GRIPS

Deluxe Cord Grips provide strain relief and bend support for cables running into machinery and connection boxes. Select the deluxe grip that fits the NPT size being connected to. Available with Straight Male, 90 degree Male, 45 degree Male and Straight Female connections. The wire mesh grip is sized to provide bend support and pull out resistance for the cable range listed.



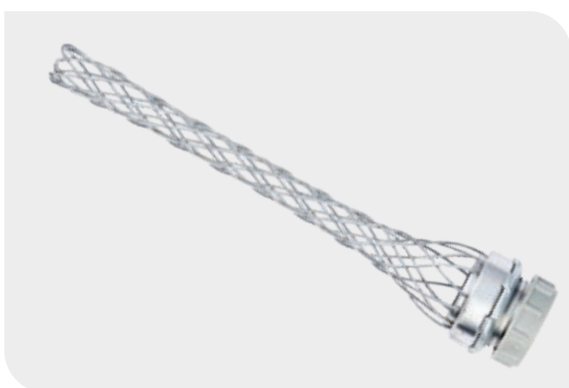
Range		Straight Male	90° Male	45° Male	Straight Female
in	mm	Slingco Part No.	Slingco Part No.	Slingco Part No.	Slingco Part No.
3/8" NPT					
0.19 - 0.25	4.8 - 6.4	ZCS7713	ZCS7717		
0.25 - 0.31	6.4 - 7.9	ZCS7714	ZCS7718		
0.31 - 0.38	7.9 - 10	ZCS7715	ZCS7719		
0.38 - 0.44	10 - 11.1	ZCS7716	ZCS7720		
1/2" NPT					
0.19 - 0.25	4.8 - 6.4	ZCS7721	ZCS7727	ZCS7731	ZCS7735
0.25 - 0.38	6.4 - 10	ZCS7722	ZCS7728	ZCS7732	ZCS7736
0.38 - 0.50	10 - 12.7	ZCS7723	ZCS7729	ZCS7733	ZCS7737
0.50 - 0.63	12.7 - 16	ZCS7724	ZCS7730	ZCS7734	ZCS7738
0.63 - 0.75	16 - 19	ZCS7725			
0.75 - 0.88	19 - 22.4	ZCS7726			
3/4" NPT					
0.25 - 0.38	6.4 - 10	ZCS7739	ZCS7744	ZCS7748	ZCS7752
0.38 - 0.50	10 - 12.7	ZCS7740	ZCS7745	ZCS7749	ZCS7753
0.50 - 0.63	12.7 - 16	ZCS7741	ZCS7746	ZCS7750	ZCS7754
0.63 - 0.75	16 - 19	ZCS7742	ZCS7747	ZCS7751	ZCS7755
0.75 - 0.88	19 - 22.4	ZCS7743			
1" NPT					
0.44 - 0.56	11.2 - 14	ZCS7887	ZCS7894	ZCS7899	ZCS7904
0.56 - 0.69	14 - 17.5	ZCS7888	ZCS7895	ZCS7900	ZCS7905
0.63 - 0.75	16 - 19	ZCS7889	ZCS7896	ZCS7901	ZCS7906
0.75 - 0.88	19 - 22.4	ZCS7890	ZCS7897	ZCS7902	ZCS7907
0.88 - 1.00	22.4 - 25.4	ZCS7891	ZCS7898	ZCS7903	ZCS7908
1.00 - 1.13	25.4 - 28.7	ZCS7892			
1.13 - 1.25	28.7 - 31.8	ZCS7893			
1.25" NPT					
0.75 - 0.88	19 - 22.4	ZCS7909	ZCS7914		
0.88 - 1.00	22.4 - 25.4	ZCS7910	ZCS7915		
1.00 - 1.13	25.4 - 28.7	ZCS7911	ZCS7916		
1.13 - 1.25	28.7 - 31.8	ZCS7912	ZCS7917		
1.25 - 1.38	31.8 - 35.1	ZCS7913	ZCS7918		
1.5" NPT					
0.75 - 0.88	19 - 22.4	ZCS7919	ZCS7929		
0.88 - 1.00	22.4 - 25.4	ZCS7920	ZCS7930		
1.00 - 1.13	25.4 - 28.7	ZCS7921	ZCS7931		
1.13 - 1.25	28.7 - 31.8	ZCS7922	ZCS7932		
1.25 - 1.38	31.8 - 35.1	ZCS7923	ZCS7933		
1.31 - 1.44	33.3 - 36.6	ZCS7924			
1.44 - 1.56	36.6 - 39.6	ZCS7925			
1.56 - 1.69	39.6 - 43	ZCS7926			
1.69 - 1.81	43 - 46	ZCS7927			
1.75 - 1.88	44.5 - 47.8	ZCS7928			
2" NPT					
1.25 - 1.38	31.8 - 35.1	ZCS7934	ZCS7945		
1.31 - 1.44	33.3 - 36.6	ZCS7935	ZCS7946		
1.44 - 1.56	36.6 - 39.6	ZCS7936	ZCS7947		
1.56 - 1.69	39.6 - 43	ZCS7937	ZCS7948		
1.69 - 1.81	43 - 46	ZCS7938	ZCS7949		
1.75 - 1.88	44.5 - 47.8	ZCS7939	ZCS7950		
1.81 - 1.94	46 - 49.3	ZCS7940			
1.94 - 2.06	49.3 - 52.3	ZCS7941			
2.06 - 2.19	52.3 - 55.5	ZCS7942			
2.19 - 2.31	55.5 - 58.7	ZCS7943			
2.31 - 2.44	58.7 - 61.9	ZCS7944			
2.5" NPT					
1.69 - 1.81	43 - 46	ZCS7951			
1.81 - 1.94	46 - 49.3	ZCS7952			
1.94 - 2.06	49.3 - 52.3	ZCS7953			
2.06 - 2.19	52.3 - 55.5	ZCS7954			
2.19 - 2.31	55.5 - 58.7	ZCS7955			
2.31 - 2.44	58.7 - 62	ZCS7956			

DELUXE CORD GRIPS (CONTINUED)



Range		Straight Male	90° Male	45° Male	Straight Female
in	mm	Slingco Part No.	Slingco Part No.	Slingco Part No.	Slingco Part No.
3.0" NPT					
1.69 - 1.81	43 - 46	ZCS7957			
1.81 - 1.94	46 - 49.3	ZCS7958			
1.94 - 2.06	49.3 - 52.3	ZCS7959			
2.06 - 2.19	52.3 - 55.5	ZCS7960			
2.19 - 2.31	55.5 - 58.7	ZCS7961			
2.31 - 2.44	58.7 - 62	ZCS7962			
2.44 - 2.63	62 - 66.5	ZCS7963			
2.63 - 2.81	66.5 - 71.4	ZCS7964			
2.81 - 3.00	71.4 - 76.2	ZCS7965			
3.00 - 3.25	76.2 - 82.6	ZCS7966			

DUST-TIGHT CORD GRIPS



Dust-Tight Cord Grips provide strain relief and bend support for cables running into machinery and connection boxes. Select the deluxe grip that fits the NPT size being connected to. Available with Straight Male, 90 degree Male, 45 degree Male and Straight Female connections. The wire mesh grip is sized to provide bend support and pull out resistance for the cable range listed.

Slingco Part No. (Insulated)	Slingco Part No. (Non-insulated)	Range		NPT Size
		in	mm	in
ZCS7674	ZCS7756	0.22 - 0.32	5.6 - 8.1	0.5
ZCS7675	ZCS7757	0.30 - 0.43	7.6 - 10.9	0.5
ZCS7676	ZCS7758	0.40 - 0.54	10.1 - 13.7	0.5
ZCS7677	ZCS7759	0.52 - 0.73	13.2 - 18.5	0.75
ZCS7678	ZCS7760	0.70 - 0.97	17.8 - 24.6	1
ZCS7679	ZCS7761	0.94 - 1.25	23.8 - 31.8	1.25
ZCS7680		1.20 - 1.50	30.5 - 38.1	1.5
ZCS7681		1.40 - 1.75	38.1 - 44.5	2
ZCS7682		1.62 - 2.00	41.1 - 50.8	2.5
ZCS7683		2.00 - 2.45	50.8 - 62.2	2.5



I-GRIPS



Strain Relief mesh grip with crimped eye connectors for easy attachment to cord clamps. Eye connectors allow for attachment with screws for secure placement and hold. Made of galvanised wire these grips come in a variety of cable ranges. When installed relieves strain from bend angle and secures cord from pull out potential. Connectors made of aluminium.

Slingco Part No.	Size Range		Mesh Length		Eye Opening		Approx. Break Load	
	in	mm	in	mm	in	mm	lb	kg
ZCS8527	0.22 - 0.32	5.6 - 8.1	4.5	114.3	0.32	8.1	100	45.36
ZCS8513	0.30 - 0.43	7.62 - 11	4.5	114.3	0.32	8.1	180	81.64
ZCS8514	0.40 - 0.56	10 - 14	5	127	0.32	8.1	180	81.64
ZCS8515	0.52 - 0.73	13.2 - 19	6.5	157.5	0.32	8.1	450	204
ZCS8516	0.70 - 0.85	18 - 22	8.5	216	0.32	8.1	600	272
ZCS8517	0.82 - 1.00	21 - 25	8.5	216	0.32	8.1	600	272
ZCS8518	0.94 - 1.25	24 - 32	11.75	298.5	0.32	8.1	600	272
ZCS11560	1.75 - 2.0	44.45 - 50.8	11.75	298.5	0.25	6.3	600	272

CONDUIT RISER CABLE GRIP - STAINLESS STEEL



A single weave grip, with a support ring, designed for the support of electrical cabling in standard rigid conduit.



Slingco comparison reference numbers and Approximate breaking strengths (lbs)

Conduit size inches	Cable sizes diameter inches																
	0.50-0.63	0.63-0.75	0.75-1.00	1.00-1.25	1.25-1.50	1.50-1.75	1.75-2.00	2.0-2.5	2.0-3.0	2.5-3.0	3.5-4.0	3.0-3.5	3.5-4.5	3.5-4.0	4.0-4.5	4.5-5.0	4.5-5.0
	Length inches																
	8	9	11	12	12	14	15	17	17	18	18	20	20	21	21	27	27
0.75	ZCS2690 530																
1	ZCS2691 490	ZCS2694 790															
1.25	ZCS2692 450	ZCS2695 740	ZCS2698 1,030														
1.5		ZCS2696 690	ZCS2699 970	ZCS2701 1,610													
2	ZCS2693 370	ZCS2697 640	ZCS2700 920	ZCS2702 1,520	ZCS2704 1,610												
2.5					ZCS2705 1,510	ZCS2707 1,610	ZCS2708 2,150										
3				ZCS2703 1,340	ZCS2706 1,400	ZCS2709 1,490	ZCS2710 1,990	ZCS2711 3,260									
3.5								ZCS2714 2,970		ZCS2716 3,260							
4							ZCS2712 1,670	ZCS2713 2,680		ZCS2715 2,890		ZCS2717 4,080					
5									ZCS5645* 2,150	ZCS2719 2,150	ZCS5646* 3,130	ZCS2721 2,860		ZCS2723 3,130			
6												ZCS2722 2,240	ZCS5647 2,240	ZCS2724 2,240	ZCS4755 2,240	ZCS3259 4,995	ZCS4284 4,995

HEAVY DUTY HOSE RESTRAINT GRIPS / WHIPSOCKS



Safety restraining system designed to prevent whipping in the event of a pressurised hose becoming detached from its fitting.

Slingco Part No.	Eye Type	Range		Lattice Length		Lattice Weave	Approx. Break Load	
		in	mm	in	mm		lb	kg
DOUBLE THIMBLE EYE - GALVANISED STEEL								
ZCS5363	Thimble eye	1.0 - 1.5	25 - 38	26	660	Double	11,000	4,911
ZCS5364	Thimble eye	1.5 - 2.5	38 - 63	40	1,016	Double	20,000	8,928
ZCS5365	Thimble eye	2.5 - 3.5	63 - 89	42	1,067	Double	22,000	9,821
ZCS5366	Thimble eye	3.5 - 4.5	89 - 114	44	1,118	Double	27,000	12,053
ZCS5367	Thimble eye	4.5 - 5.5	114 - 140	48	1,219	Double	31,000	13,839
ZCS6012	Thimble eye	5.5 - 7.0	140 - 180	60	1,524	Double	50,000	22,685
DOUBLE THIMBLE EYE - 316 STAINLESS STEEL								
ZCS5650	Thimble eye	1.0 - 1.5	25 - 38	26	660	Double	7,700	3,437
ZCS5651	Thimble eye	1.5 - 2.5	38 - 63	40	1,016	Double	14,000	6,250
ZCS5652	Thimble eye	2.5 - 3.5	63 - 89	42	1,067	Double	15,400	6,874
ZCS5653	Thimble eye	3.5 - 4.5	89 - 114	44	1,118	Double	18,900	8,437
ZCS5654	Thimble eye	4.5 - 5.5	114 - 140	48	1,219	Double	21,700	9,687
ZCS6000	Thimble eye	5.5 - 7.0	140 - 180	60	1,524	Double	35,000	15,880
DOUBLE EYE MULTIWEAVE - MAX STRENGTH - 316 STAINLESS STEEL								
ZCS3995	Thimble eye	1.14 - 1.57	29 - 40	50	1,270	Double	35,000	15,625
ZCS3295	Flex eye	2.75 - 3.44	70 - 87	58	1,460	Multiple	49,000	22,230
ZCS3254	Flex eye	3.00 - 3.50	76 - 89	58	1,460	Multiple	39,200	17,785
ZCS6004	Flex eye	3.50 - 4.75	89 - 120	58	1,460	Multiple	50,000	22,320



HOSE WHIP RESTRAINT



The strong steel cable prevents hose-whip accidents in the event of hose or coupling failure.

Easily fitted spring loaded loops grip the hose firmly.

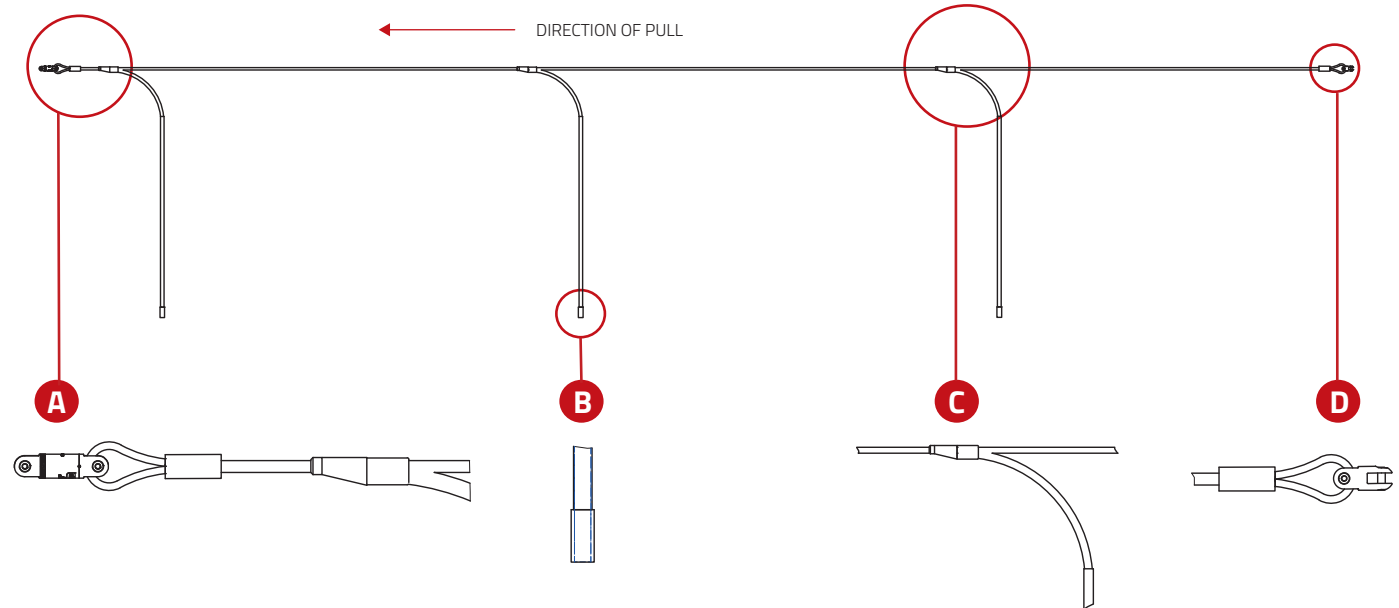
Slingco Part No.	Range		Lattice Weave	Lattice Length	
	in	mm		in	mm
ZCS0318HA	2.00 - 2.50	50 - 63	Double	42	1,065
ZCS1158HA	2.50 - 3.50	63 - 89	Double	48	1,220
ZCS1159HA	3.50 - 4.50	89 - 115	Double	54	1,370
ZCS1975HA	4.50 - 5.50	115 - 140	Double	54	1,370

ANTI ROTATIONAL DEVICE



The device prevents the cable from twisting as it travels over pulling blocks. Left uncontrolled, the optical cable's delicate glass fibres could be permanently damaged during installation.

- Stops cables from twisting as they pass over pulling blocks
- For use with fibre optic and OPGW cable
- Prevents irreparable damage to delicate fibre optics caused by cable twists during installation
- The ARD has weighted attachments that hang down while stringing, keeping the ARD vertical to stop cable rotation
- ARD attachments collapse in line, enabling them to travel easily over pulling blocks

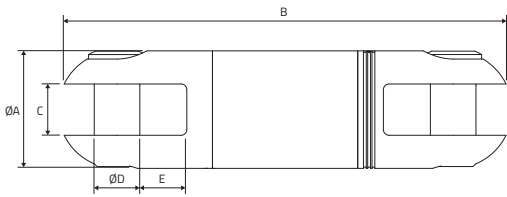


Slingco Part No.	Overall Length		Working load @3:1 Safety Factor		Length of Attachments Approx		Weight of each Attachment	
	in	mm	lb	kg	in	mm	lb	kg
ZAD3799	348	8,839	5,000	2,268	96	2,438	14	6.35

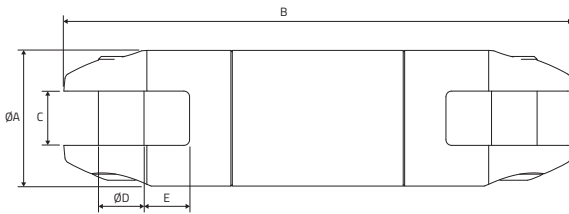
LINE PULLING SWIVELS

Swivels designed for use in stringing high tension wires for electrical transmission and distribution.

LINE PULLING SWIVEL – STANDARD ENDS



LINE PULLING SWIVEL – BULL NOSE



Swivels are important in pulling when the lines develop torsion during the installation. This torsion must be released. Use of a swivel will release torque and prevent it from reaching dangerous levels, which can cause damage to the cable or grip.

Slingco also offers a 'bull nose' style swivel designed for underground and overhead applications.

All swivels are stringently quality tested and inspected to ensure optimum performance and reliability.

LINE PULLING SWIVEL
STANDARD ENDS



LINE PULLING SWIVEL
BULL NOSE



Slingco Part No.	Safe working load lb (kN)		Ø A in (mm)	B Length in (mm)	C Slot width in (mm)	D Pin Ø in (mm)	Ø E Recess in (mm)	Weight lb (kg)
	3:1	5:1						
LINE PULLING SWIVEL – STANDARD ENDS								
ZSW2091	2,250 (10)	1,350 (6)	0.87 (22)	3.37 (85.6)	0.39 (10)	0.31 (8)	0.39 (10)	0.43 (0.19)
ZSW2092	3,500 (15.5)	2,100 (9.3)	0.98 (25)	3.98 (101.1)	0.43 (11)	0.39 (10)	0.43 (11)	0.56 (0.25)
ZSW2093	5,000 (22)	3,000 (13.2)	1.26 (32)	4.96 (126)	0.55 (14)	0.39 (10)	0.55 (14)	1.13 (0.51)
ZSW2094	7,000 (31.1)	4,200 (18.7)	1.38 (35)	5.22 (132.7)	0.55 (14)	0.49 (12.5)	0.54 (13.8)	1.44 (0.65)
ZSW2096	10,000 (44.5)	6,000 (26.7)	1.62 (41.25)	6.11 (155.1)	0.71 (18)	0.63 (16)	0.65 (16.5)	2.35 (1.07)
ZSW2097	15,000 (66)	9,000 (39.6)	2.09 (53)	7.34 (186.4)	0.79 (20)	0.71 (18)	0.83 (21)	4.59 (2.08)
LINE PULLING SWIVEL – BULL NOSE								
ZSW2649	4,000 (17.8)	2,400 (10.7)	1.26 (32)	4.74 (120.5)	0.61 (15.5)	0.37 (9.5)	0.52 (13.25)	1.01 (0.46)
ZSW2929	8,000 (35.5)	4,800 (21.4)	1.50 (38)	5.38 (136.6)	0.63 (16)	0.43 (11)	0.61 (15.5)	1.75 (0.80)
ZSW6122	10,000 (44.5)	6,000 (26.7)	1.87 (47.6)	7.02 (178.3)	0.75 (19.05)	0.63 (16)	0.63 (16)	3.72 (1.69)
ZSW6123	16,000 (71.2)	9,600 (42.7)	2.44 (62)	10.15 (257.7)	1.00 (25.4)	0.87 (22)	1.12 (28.5)	9.19 (4.17)
ZSW2857	30,000 (134)	18,000 (80)	2.50 (63.5)	11.13 (282.6)	1.00 (25.4)	0.87 (22.2)	1.13 (28.6)	10.44 (4.74)

Swivel and Cable Grip match-up

Approx. breaking strength of cable grip lb (kN)	Cable grip colour code	Size range O.D. in (mm)	Recommended swivel	Safe working load of swivel lb (kN)	Revolving Eye	Flexible Eye MU
LINE PULLING SWIVEL – STANDARD ENDS						
7,000 (31.1)	Dark green	0.25 - 0.50 (6 - 12)	ZSW2092	3,500 (15.6)	ZCS2177	ZCS1710
10,500 (46.7)	Brown	0.50 - 0.75 (12 - 19)	ZSW2093	5,000 (22.2)	ZCS2178	ZCS1711
14,100 (62.7)	Light blue	0.75 - 1.00 (19 - 25)	ZSW2093	5,000 (22.2)	ZCS2179	ZCS1712
25,000 (111.2)	Gold	1.00 - 1.25 (25 - 32)	ZSW2096	10,000 (44.5)	ZCS2180	ZCS1713
31,000 (137.9)	Black	1.25 - 1.50 (32 - 38)	ZSW2096	10,000 (44.5)	ZCS2181	ZCS1714
31,000 (137.9)	Red	1.50 - 1.75 (38 - 44)	ZSW2096	10,000 (44.5)	ZCS2182	ZCS1715
43,000-49,000 (191.3 - 218)	Dark blue	1.75 - 2.25 (44 - 57)	ZSW2097	15,000 (66.7)	ZSC2183*	ZCS1716†
LINE PULLING SWIVEL – BULL NOSE						
7,000 (31.1)	Dark green	0.25 - 0.50 (6 - 12)	ZSW2649	4,000 (17.8)	ZCS2177	ZCS1710
10,500 (46.7)	Brown	0.50 - 0.75 (12 - 19)	ZSW2929	5,000 (22.2)	ZCS2178	ZCS1711
14,100 (62.7)	Light blue	0.75 - 1.00 (19 - 25)	ZSW2929	5,000 (22.2)	ZCS2179	ZCS1712
25,000 (111.2)	Gold	1.00 - 1.25 (25 - 32)	ZSW6122	10000 (44.5)	ZCS2180	ZCS1713
31,000 (137.9)	Black	1.25 - 1.50 (32 - 38)	ZSW6122	10000 (44.5)	ZCS2181	ZCS1714
31,000 (137.9)	Red	1.50 - 1.75 (38 - 44)	ZSW6122	10000 (44.5)	ZSC2182	ZCS1715
43,000*-49,000† (191.3 - 218)	Dark blue	1.75 - 2.25 (44 - 57)	ZSW6123	16,000 (71.2)	ZSC2183*	ZCS1716†

The above is intended as a rough guide. The recommended working load should be determined by the competent person(s) using the cable grip and/or Slingco swivel.

Swivel or Connector Model	ZSW2091	ZSW2092	ZSW2093	ZSW2094	ZSW2096 ZSW6122	ZSW2097	ZSW2929	ZSW2649	ZSW2857	ZSW6123	ZSW6554	ZSW6555	ZSW6556	ZSW6557 ZSW6558 ZSW6559 ZSW6560
Replacement Pin (HEX)	SWI2858	SWI2810	SWI2340	SWI2341	SWI2343	SWI2344	SWI2801	SWI2648	SWI2748	SWI5184	SWI2859	SWI2339	SWI5309	SWI5310

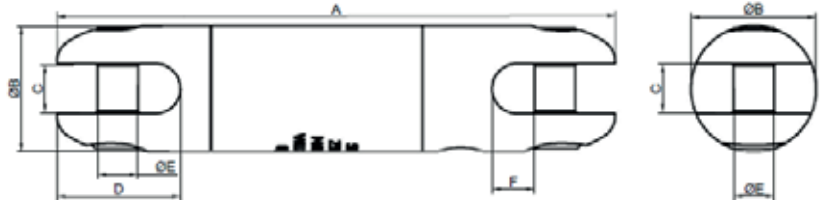
SAFETY NOTE: All Slingco Line Pulling Swivels are designed for straight line pulling and will not support side loads as would be encountered traveling over a bull wheel. Swivel selection should be based on pulling line diameter, grip size, opening dimensions, pin sizes, working load, and sheave groove diameter. Swivels are not designed for general lifting.

DIRECTIONAL DRILLING SWIVELS

Slingco Directional Drilling Swivels are designed to counter rotational forces caused by boring equipment used in underground pulling and drilling applications. Grease nipple included for removal of dirt and contaminants. Made of carbon steel and zinc passivated for durability. Hex pins. Quality tested and inspected to ensure optimum reliability and performance.



Slingco Part No	Safe Working Load (3:1)		A		Ø B		C		D		Ø E		F	
	lb	kN	in	mm	in	mm	in	mm	in	mm	in	mm	in	mm
ZSW11133	8,500	37.8	7.24	183.8	1.62	41.2	0.63	16.0	1.60	40.6	0.53	13.4	0.55	13.9
ZSW11134	10,000	44.4	8.32	211.3	2.00	50.8	0.75	19.0	1.79	45.0	0.59	14.9	0.75	19.0



BRIDGE TYPE CABLE LAYING ROLLER



Made of steel with zinc plating for general purpose cable installation work in trenches or over rough surfaces. They are suitable for power, telecoms and utility installations, and can bridge existing cables or conduit in trenches or ducts.

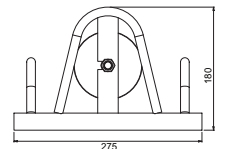
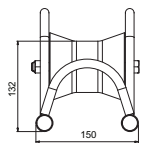
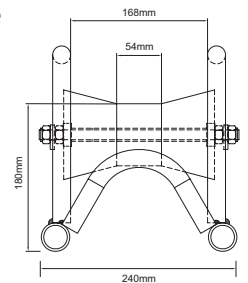
The Compact Cable Roller is for use in narrow trenches and/or in confined areas. Contact Slingco if you have custom roller needs.

Bridge Type Cable Roller

Slingco Part No.	Base Footprint in (mm)	Height to top of roller in (mm)	Handle height in (mm)
ZGP2395	12 x 9.5 (305 x 240)	7.125 (180)	10 (255)

Compact Bridge Type Cable Laying Roller

Slingco Part No.	Base Footprint in (mm)	Height in (mm)	Max Cable Diameter in (mm)	Weight lb (kg)
ZGP8270	10.83 x 5.9 (275 x 150)	7 (180)	3.54 (90)	5.5 (2.5)



* Drawing measurements in mm

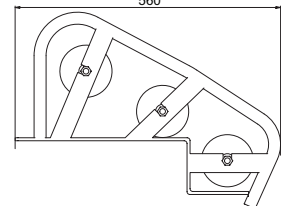
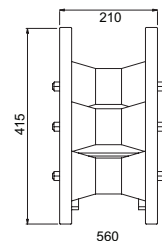
EDGE MOUNT MANHOLE LEAD-IN CABLE ROLLER (HEAVY DUTY)



The manhole cable roller leads the cable from the drum into the jointbox/manhole or the winch bond out of the manhole.

- Heavy duty tubular steel construction
- Suitable for cables up to 130mm
- 3 x 110mm diameter steel roller* fitted with sealed precision roller bearings
- Zinc plated
- Weight: 10 Kg

* The Diablo Rollers can be substituted with a heavy gauge 89mm tubular Steel Roller fitted oil impregnated maintenance free bushes for use with the heavier cables.



Slingco Part No.	Base Footprint in (mm)	Height in (mm)
ZGP8209	22 x 8.25 (560 x 210)	16.34 (415)

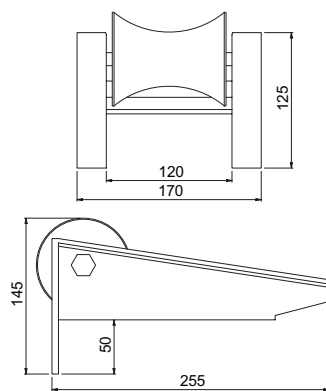
EDGE MOUNT MANHOLE LEAD-IN CABLE ROLLER (LIGHT DUTY)



The manhole cable roller leads the cable from the drum into the jointbox/manhole or the winch bond out of the manhole. The roller has 2 hooks for location on the edge of the manhole.

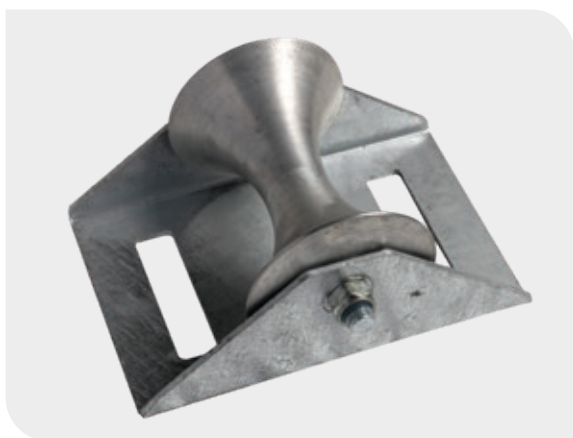
- Heavy steel section construction
- 76mm diameter aluminium roller*
- Fitted with oil-impregnated maintenance-free bushes
- Sealed precision roller bearings
- Zinc plated or powder coated finish
- Weight 3Kg

*The aluminium roller can be substituted with a solid steel roller when using wire winch bond thus preventing damage.



Slingco Part No.	Base Footprint in (mm)	Height in (mm)
ZGP8210	10 x 6.7 (255 x 170)	5.7 (145)

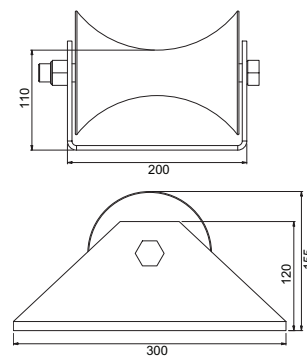
HEAVY DUTY 214MM STRAIGHT LINE CABLE ROLLER



The diablo is machined with a 107mm radius giving a maximum capacity of 214mm diameter.

- Heavy duty folded frame straight line roller
- Aluminium diablo roller with 78mm radius
- Sealed roller bearing and 20mm shaft
- Galvanised finish
- Weight : 7Kg

Slingco Part No.	Base Footprint in (mm)	Height in (mm)
ZGP8268	11.81 x 7.87 (300 x 200)	6.1 (155)



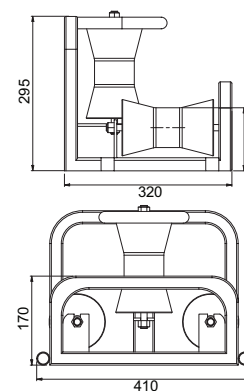
HEAVY DUTY TRIPLE CORNER CABLE ROLLER



This is a heavy duty corner cable roller for use in most cable laying applications. They can be used singularly or linked together using link pins to form a full bend. All products in the bend roller range have the same link points to facilitate various bend/roller configurations.

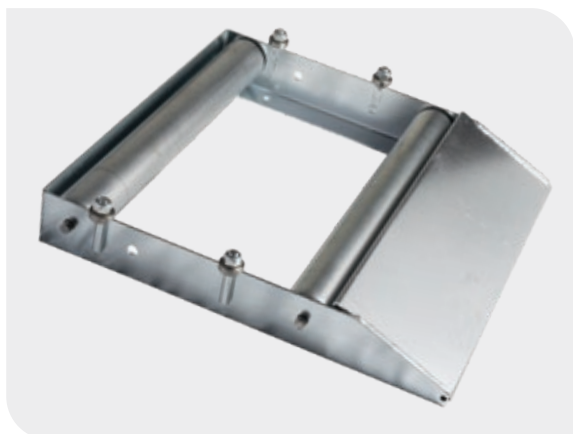
- Heavy duty corner roller made from tubular sections
- 3 x 110mm diameter large waisted steel rollers*
- Sealed roller bearing fitted
- Zinc plated finish
- Universal link pin mount positions
- Weight 8.5Kg

* The diablo rollers can be substituted with a heavy gauge 89mm tubular steel roller fitted with oil impregnated maintenance free bushes.



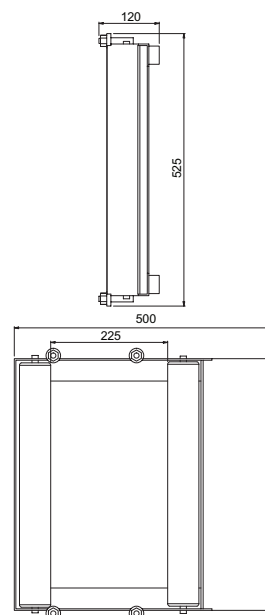
Slingco Part No.	Base Footprint in (mm)	Height in (mm)
ZGP8269	16.4 x 12.6 (410 x 320)	11.61 (295)

CABLE DRUM ROTATOR



This is a compact light weight Cable Drum Rotator. Drums are simply rolled up the ramp on to the adjustable rollers to allow it to spin freely.

- Pressed steel construction
- Ideal for where space is limited.
- 60 mm diameter zinc plated rollers
- Sealed roller bearings fitted
- Spring loaded shafts for easy replacement/ adjustment
- Capacity 200 Kg
- Max / min drum size 800 / 300 mm
- Drum Width 450 mm
- Zinc plated finish
- Weight: 10.5 Kg



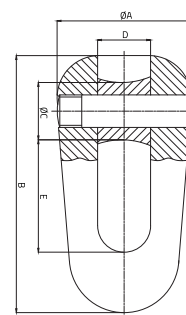
Slingco Part No.	Base Footprint in (mm)	Height in (mm)	Max Capacity lb (kg)
ZGP8267	19.68 x 20.66 (500 x 525)	4.72 (120)	440 (200)

C CONNECTORS



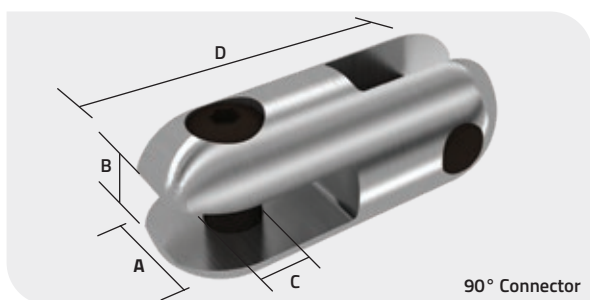
Use to connect rope, swivels and other objects.

Slingco Part No.	No.	Model	A	B	C	D	E	d Pin dia	Working load	Weight
			mm	mm	mm	mm	mm	mm	KN	kg
ZSW7314	1	SLU-1	36	68	18	14	29	10	10	0.2
ZSW7315	2	SLU-3	37	76	20	17	31	12	30	0.23
ZSW7316	3	SLU-5	50	96	23	19	42	18	50	0.6
ZSW7317	4	SLU-8	56	110	28	22	50	20	80	0.8
ZSW7318	5	SLU-10	59	126	30	26	54	22	100	1.2
ZSW7319	6	SLU-13	61	134	32	27	56	24	130	1.3
ZSW7320	7	SLU-25	80	178	44	35	72	30	250	3.0

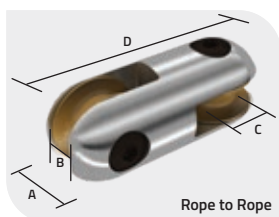


CONNECTORS: 90°, ROPE TO ROPE, ROPE TO SWIVEL

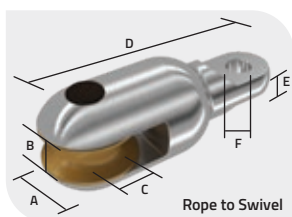
Use to connect rope, swivels and other objects. With high strength pins and smooth rollers you can safely connect rope without fear of fraying or damage. Use the convenient 90° connectors to link wire and other non-rope items. Connectors have high strength hex pins. The Rope to Rope connector has two rollers to protect rope from becoming frayed.



90° Connector



Rope to Rope



Rope to Swivel

90° Connector

Slingco Part No.	Safe working load		A		B		C		D		Weight	
	lb	kg	in	mm	in	mm	in	mm	in	mm	lb	kg
ZSW6554	2,500	1,134	0.875	22	0.375	9.6	0.313	8	2.175	54	0.17	0.08
ZSW6555	5,000	2,240	1.25	31.8	0.53	13.5	0.406	10	2.875	73	0.46	0.21
ZSW6556	9,000	4,030	1.5	38.1	0.594	15	0.5	12.5	3.375	86	0.73	0.33
ZSW6557	15,000	6,800	2	50.8	0.781	20	0.688	18	4.563	116	2	0.91

Rope to Rope Connector

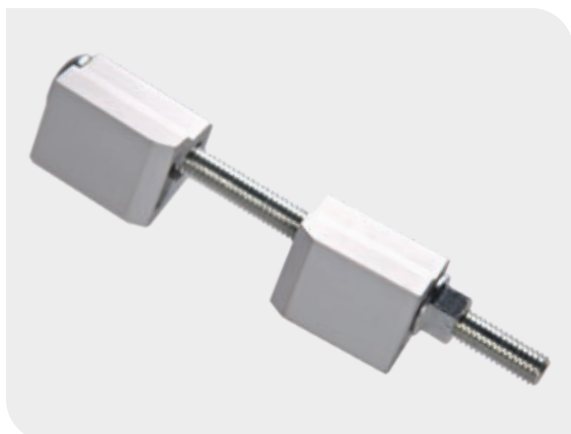
Slingco Part No.	Safe working load		Max rope dia.		A		B		C		D		Weight	
	lb	kg	in	mm	in	mm	in	mm	in	mm	in	mm	lb	kg
ZSW6558	15,000	6,800	7/8	22.2	2	50.8	15/16	24	11/16	18	5 1/2	140	2.7	1.23

Rope to Swivel Connector

Slingco Part No.	Safe working load		Max rope dia.		A		B		C		D		E		F		Weight	
	lb	kg	in	mm	in	mm	in	mm	in	mm	in	mm	in	mm	in	mm	lb	kg
ZSW6559	7,000	3,170	0.875	22.2	2	50.8	0.938	24	0.688	18	5.313	135	0.5	12.7	0.531	13.5	2.09	0.95
ZSW6560	15,000	6,800	0.875	22.2	2	50.8	0.938	24	0.688	18	5.313	137	0.656	16.7	0.75	18	2.54	1.15

Safe working load based upon 3:1 factor of safety.

POLE BAND SYSTEM



The Slingco Pole Band System includes bolt clamps and mounting plates and 19mm (0.75") or 31.75mm (1.25") banding. Packages with different band lengths make this system flexible for varying pole sizes. Just measure the circumference of the pole and add a minimum of 152.4mm (6") and select the next size up. Securely mount hardware to cylindrical or square wooden, metal or concrete poles.

The system includes aluminium hardware extrusions, bolt hardware and pre-cut lengths of stainless steel banding. The system is easy to attach and tighten onto poles. The optional mounting plates allow quick attachment of hardware.

Extrusions and mounting plates available separately for use with rolls of banding cut to length in the field.

Slingco Part No.	Description	Pack Quantity	Pre-Cut Band Length		Band Width	
			in	mm	in	mm
PRE-ASSEMBLED EXTRUSIONS AND BANDING						
ZPC10646-36	Two extrusions and pre-cut band	12	36	914	0.75	19
ZPC10646-40	Two extrusions and pre-cut band	12	40	1,016	0.75	19
ZPC10646-48	Two extrusions and pre-cut band	12	48	1,219	0.75	19
ZPC10646-60	Two extrusions and pre-cut band	12	60	1,524	0.75	19
ZPC10646-72	Two extrusions and pre-cut band	12	72	1,829	0.75	19
ZPC10646-80	Two extrusions and pre-cut band	12	80	2,032	0.75	19
ZPC10647-36	Two extrusions and pre-cut band	12	36	914	1.25	31.75
ZPC10647-40	Two extrusions and pre-cut band	12	40	1,016	1.25	31.75
ZPC10647-48	Two extrusions and pre-cut band	12	48	1,219	1.25	31.75
ZPC10647-60	Two extrusions and pre-cut band	12	60	1,524	1.25	31.75
ZPC10647-72	Two extrusions and pre-cut band	12	72	1,829	1.25	31.75
ZPC10647-80	Two extrusions and pre-cut band	12	80	2,032	1.25	31.75
BOLT CLAMPS AND MOUNTING PLATES						
ZPC10646	19mm (0.75") Bolt Clamp	12	N/A	N/A	0.75	19
ZPC10647	31.75mm (1.25") Bolt Clamp	12	N/A	N/A	1.25	31.75
ZPC10648	Mounting Plate with 50.8 mm (2") Bolt	12	N/A	N/A	0.75 or 1.25	19 or 31.75
ZPC10910	Mounting Plate with 76.2mm (3") Bolt	12	N/A	N/A	0.75 or 1.25	19 or 31.75

POLE STAPLES



Slingco Staples are used to securely hold grounding and bonding wires while insulating the wire from the staple. The insulation minimizes TV and Radio Frequency Interference by preventing sparks. The insulator ensures that current cannot flow into the staple that could cause fires on the pole. The insulator also acts as a barrier to corrosion caused by contact with ground wires.

- Securely hold grounding and bonding wires
- Insulated inserts
- Barbed and non-barbed styles

Slingco Part No.	Description	For Use With Wire
ZMI6326	30mm (1.5") x 6.35mm (0.25") x 3.75mm (0.148") Galvanised barbed wood staple with TVI insulator	#6, #8 & #10 solid CU wire
ZMI6327	50.8mm (2") x 14.3mm (9/16") x 6.35mm (0.25") Galvanised bonding wire staple with TVI insulator	#4 CU wire

TOOLS, BUCKLES AND BANDS

FOR QUICK AND EFFICIENT BANDING OF CABLE GRIPS, HOSES AND MORE

Slingco Banding Tools deliver a fast and easy way to install banding clamps. Designed for fast and efficient installation of steel bands for cable grips, hoses and many other applications, their drop-forged construction and comfortable design makes them quick and easy to use and guarantee a long and useful tool life.

We offer three different tool options, with bands and buckles available for each (order separately). See opposite for the bands and buckles suited to each tool type.

In addition to our range of steel bands available from stock we can also manufacture custom sizes if required. Please call with your requirements.

Slingco Fast Banding Tool



WITH PRE-LOOPED BANDS FOR QUICKLY SECURING GRIPS AND OTHER SIMPLE BANDING APPLICATIONS
Our Fast Banding Tool uses pre-looped punch-style bands for quick and secure banding of cable grips, hoses and other cylindrical items.

Slingco Light Duty Banding Tool



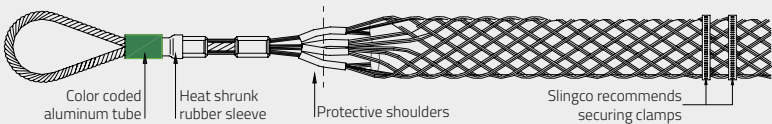
FOR UTILITY POLE AND OTHER LIGHT DUTY POLE BANDING APPLICATIONS
Featuring a built-in cutter with PVC coated handle for comfort, and a sliding block assembly with spring loaded lever. Operates on band widths 3/8" to 3/4" and thicknesses up to 0.030".

Slingco Heavy Duty Banding Tool



FOR UTILITY POLE AND OTHER HEAVY DUTY BANDING APPLICATIONS
Featuring a built-in cutter and a sliding block assembly. Operates on band widths 3/4", 1", and 1-1/4" and thickness of 0.044".

Note: Slingco recommends double banding the ends of cable grips.



FAST BANDING: PRE-LOOPED BANDS FOR QUICKLY



CPC2875

LIGHT DUTY BANDING: UTILITY POLE AND OTHER



CPC8748

HEAVY DUTY BANDING: UTILITY POLE AND OTHER



CPC8780

SECURING GRIPS AND OTHER SIMPLE BANDING APPLICATIONS

Use pre-looped punch style bands to quickly and securely band cable grips, hoses or other cylindrical items.

The bands are pre-looped through the buckle to slide over the end of the item being banded. Just tighten the band using the Slingco Punch Banding Tool then, when the band is tight, just punch the head of the tool and snip off the extra banding. Simple!

The sizes opposite refer to the inner loop diameter of the band. Select the size that will comfortably fit over the item being banded.

Open End Band – non pre-looped 201 SS 5/8" wide band with attached buckle. Includes punch style buckle. Use as single loop for larger diameter or double looped for smaller diameters and added strength. Maximum diameter for single or double loops is listed.

Banding tool					
Slingco Part No.	Description				
CPC2875	Standard punch-style banding tool.				
Bands Pre-Looped					
Slingco Part No.	Width mm (in)	Thickness mm (in)	Loop diameter mm (in)	Pack quantity	
CPC2876	9.5 (3/8)	0.64 (0.025)	20.6 (13/16)	100/box	
CPC2880	15.9 (5/8)	0.76 (0.030)	25.4 (1)	100/box	
CPC2879	15.9 (5/8)	0.76 (0.030)	38.1 (1.5)	100/box	
CPC2878	15.9 (5/8)	0.76 (0.030)	50.8 (2.0)	100/box	
CPC2877	15.9 (5/8)	0.76 (0.030)	63.5 (2.5)	50/box	
CPC8532	15.9 (5/8)	0.76 (0.030)	76.2 (3.0)	50/box	
Open End Band – 201 SS					
Slingco Part No.	Width mm (in)	Thickness mm (in)	Length mm (in)	Loop diameter	Pack quantity
CPC08596	15.9 (5/8)	0.76 (0.030)	609 (24)	152.4mm (6") Single Wrap 76.2mm (3") Double Wrap	50/box

LIGHT DUTY POLE BANDING APPLICATIONS

Use Slingco 3/4" wide 201 Stainless Steel, or the 1/2" wide 316 Stainless Steel, banding system to secure cables and other items to Utility poles, Light stands or other structures. The Light Duty Banding Tool allows you to easily tighten and secure any length band loop.

Slingco offers rolls of 3/4" and 1/2" wide banding material in 100 foot lengths. These 100 foot band rolls come in two convenient packages – standard stack-and-store cardboard packaging, or an easy to carry red plastic tote for the 3/4" and a blue plastic tote for the 1/2".

The buckles used to secure these bands are made of 201 Stainless Steel and designed for 3/4" width bands, and 316 Stainless Steel designed for 1/2" bands.



Banding tool					
Slingco Part No.	Description				
CPC8748	Operates on band widths 3/8" to 3/4" and thickness up to 0.030". Tool has a built in cutter with PVC coated handle for comfort and sliding block assembly with spring loaded lever.				
Bands					
Slingco Part No.	Width mm (in)	Thickness mm (in)	Avg break strength kg (lb)	Pack quantity	Weight kg (lb)
CPC8743	19 (3/4)	0.76 (0.030)	1,021 (2,250)	30.48m (100') roll - Cardboard Box	3.49 (7.7)
CPC8744	19 (3/4)	0.76 (0.030)	1,021 (2,250)	30.48m (100') roll - Red Plastic Tote	3.49 (7.7)
CPC08325	12.7 (1/2)	0.76 (0.030)	544 (1,200)	30.48m (100') roll - Cardboard Box	2.31 (5.1)
CPC08326	12.7 (1/2)	0.76 (0.030)	544 (1,200)	30.48m (100') roll - Blue Plastic Tote	2.68 (5.9)
Buckles					
Slingco Part No.	Width mm (in)	Pack quantity		Weight kg (lb)	
CPC8746	19 (3/4)	100/Box		1.68 (3.7)	
CPC08327	12.7 (1/2)	100/Box		1.13 (2.5)	

HEAVY DUTY BANDING APPLICATIONS

Use the Slingco 1-1/4" 201 Stainless Steel Banding system to secure cables and other items to structures and poles where extra strength hold is required. The Heavy Duty Banding Tool allows you to easily tighten and secure any length band loop.

Perfect for use with concrete utility poles. The extra width of this band provides stronger tensile strength than the 3/4" band as well as a wider holding surface. Useful in many application environments including Utility, Marine and manufacturing where securely attaching cables, hoses or tubes onto a cylindrical object is needed. 100 ft. band roll comes in easy to stack and store cardboard box.

Giant buckles are made of 201 Stainless Steel and designed for use with 1-1/4" wide bands.

Banding tool					
Slingco Part No.	Description				
CPC8780	Operates on bands widths 19mm (0.75"), 25.4mm (1"), and 3.175mm (1.25") and thickness of 0.11mm (0.044"). Featuring a built-in cutter and a sliding block assembly.				
Bands					
Slingco Part No.	Width mm (in)	Thickness mm (in)	Average break strength kg (lb)	Pack quantity	Weight kg (lb)
CPC8745	31.75 (1.25)	0.11 (0.044)	2,495 (5,500)	30.48m (100') roll in CARDBOARD BOX PACKAGING	7.8 (17.2)
Buckles					
Slingco Part No.	Width mm (in)	Pack quantity		Weight kg (lb)	
CPC8747	31.75 (1.25)	25/Box		1.45 (3.2)	

60 TON HYDRAULIC CRIMPING TOOL



Slingco's Hydraulic Crimping Tools are designed to crimp sleeves and lugs on ACSR and ACAR transmission & distribution cables using dies that meet the standards of the utility industry. Our crimping tools are ideal for use in constructing substations and transmission lines.

The Single-Acting Crimping Tool uses hydraulic pressure to advance the ram into position, and an internal spring to return the ram to the original position. The Double-Acting Crimping Tool advances and returns the ram using hydraulic pressure alone, eliminating the possibility of the ram sticking or becoming jammed.

Our Hydraulic Crimping Tools come in a steel carrying case, and are lightweight and portable. Our crimping tools accept Slingco S60 Dies, or any shell-type dies used with Alcoa or Burndy 60-ton crimping tools.

- Accepts Slingco, Burndy L and Alcoa 6000 Series dies
- Steel Carrying Case Includes Ground Stand
- Lifting eye for hoist work
- For Crimping ACSR and ACAR transmission and distribution cables

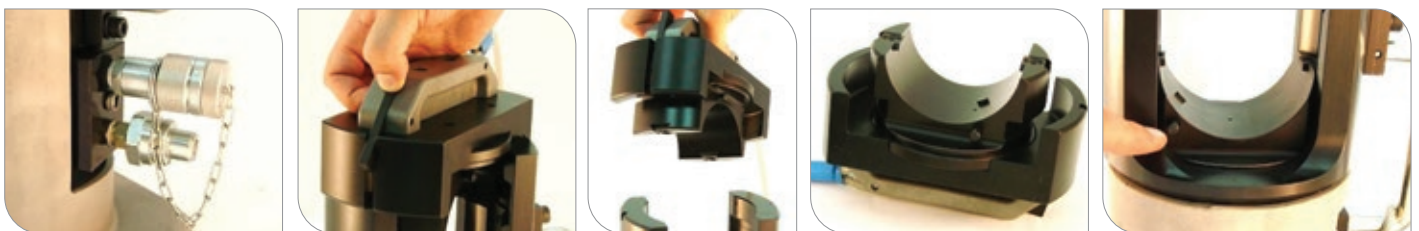
Slingco Part No.	Crimping Force	Operating Pressure	Action	Tool Weight		Oil Required
				lb	kg	
TCR7003	60 Tons	10,000 psi (700 bar)	Single-Action	47	21.32	308 cc
TCR7018	60 Tons	10,000 psi (700 bar)	Double-Action	51	23.13	314 cc

Replacement Dies for 60-Ton Hydraulic Crimping Tools



Slingco Part No.	Slingco Ref.	Alcoa Equivalent
TCR7067	S60-10SH	6010SH
TCR7068	S60-12SH	6012SH
TCR7069	S60-14SH	6014SH
TCR7070	S60-16SH	6016SH
TCR7071	S60-18SH	6018SH
TCR7072	S60-20SH	6020SH
TCR7073	S60-24SH	6024SH
TCR7074	S60-27SH	6027SH
TCR7075	S60-30SH	6030SH
TCR7076	S60-34SH	6034SH
TCR7077	S60-36SH	6036SH
TCR7078	S60-38SH	6038SH

Slingco Part No.	Slingco Ref.	Alcoa Equivalent
TCR7083	S60-40AH	6040AH
TCR7084	S60-44AH	6044AH
TCR7085	S60-48AH	6048AH
TCR7086	S60-52AH	6052AH
TCR7087	S60-56AH	6056AH
TCR7088	S60-60CD	6008CD
TCR7089	S60-64CD	6009CD
TCR7090	S60-68CD	6010CD
TCR7091	S60-72CD	6011CD
TCR7092	S60-76CD	6012CD
TCR7093	S60-80CD	6013CD
TCR7094	S60-84CD	6014CD
TCR7095	S60-88CD	6015CD
TCR7096	S60-92CD	6016CD
TCR7097	S60-96CD	6017CD



100 TON HYDRAULIC CRIMPING TOOL



Slingco's 100 Ton Hydraulic Crimping Tool is ideal for use in constructing substations and transmission lines. This tool is designed to crimp sleeves and lugs on ACSR and ACAR transmission cables using dies that meet the standards of the utility industry.

- Accepts U or shell type dies
- Steel Carrying Case
- Large handles for easy carrying
- Easy die installation

The TCR0849 comes in a single-action configuration but can be converted to double-action functionality.

Crimping Range

- Copper: Up to 2.5" OD Sleeve
- Aluminium: Up to 3" OD Sleeve
- Steel: Up to 1.25" OD Sleeve

Comes with steel carrying case.

Slingco Part No.	Crimping Force	Operating Pressure	Action	Tool Weight		Oil Required
				lb	kg	
TCR08490	100 Tons	10,000 psi (700 bar)	Single-Action	78	35.38	422 cc

Replacement Dies for 100-Ton Hydraulic Crimping Tools



Slingco Part No.	Slingco Ref.	Alcoa Equivalent
TCR08544	S100-10SH	10010SH
TCR08545	S100-12SH	10012SH
TCR08546	S100-14SH	10014SH
TCR08547	S100-16SH	10016SH
TCR08548	S100-18SH	10018SH
TCR08549	S100-20SH	10020SH
TCR08550	S100-74SH	10074SH
TCR08551	S100-75SH	10075SH
TCR08552	S100-20AH	10020AH
TCR08553	S100-24AH	10024AH
TCR08554	S100-27AH	10027AH
TCR08555	S100-30AH	10030AH
TCR08556	S100-34AH	10034AH
TCR08557	S100-36AH	10036AH
TCR08558	S100-38AH	10038AH
TCR08559	S100-40AH	10040AH
TCR08560	S100-74AH	10074AH
TCR08561	S100-75AH	10075AH
TCR08562	S100-76AH	10076AH

Slingco Part No.	Slingco Ref.	Alcoa Equivalent
TCR08563	S100-42AH	10042AH
TCR08564	S100-44AH	10044AH
TCR08565	S100-46AH	10046AH
TCR08566	S100-48AH	10048AH
TCR08567	S100-07CD	10007CD
TCR08568	S100-08CD	10008CD
TCR08569	S100-09CD	10009CD
TCR08570	S100-10CD	10010CD
TCR08571	S100-11CD	10011CD
TCR08572	S100-12CD	10012CD
TCR08573	S100-13CD	10013CD
TCR08574	S100-14CD	10014CD
TCR08575	S100-15CD	10015CD
TCR08576	S100-16CD	10016CD
TCR08577	S100-17CD	10017CD
TCR08578	S100-18CD	10018CD
TCR08579	S100-19CD	10019CD
TCR08580	S100-20CD	10020CD



12 TON WH2/WH3 KEARNEY TYPE DIES



Replacement dies for WH-2/WH-3 (10.7/12T) type crimp tools. Slingco replacement WH dies work in manual or battery powered tools. These WH-2/WH-3 dies are Kearney Seat dies.

Slingco Part No.	Slingco Ref.	Kearney Die Size
TCR09866	WH2/WH3 Die - D	D
TCR09867	WH2/WH3 Die - N	N
TCR09868	WH2/WH3 Die - O	O
TCR09870	WH2/WH3 Die - U	U
TCR09873	WH2/WH3 Die - 635	635
TCR09875	WH2/WH3 Die - 737	737
TCR09876	WH2/WH3 Die - 747	747
TCR09878	WH2/WH3 Die - 840	840
TCR09880	WH2/WH3 Die - 5/16	5/16
TCR09882	WH2/WH3 Die - 1/2	1/2
TCR09883	WH2/WH3 Die - 9/16	9/16
TCR09885	WH2/WH3 Die - 5/8	5/8
TCR09887	WH2/WH3 Die - 15/16	15/16
TCR09890	WH2/WH3 Die - 15/16H	15/16H
TCR09892	WH2/WH3 Die - 1-1/8-1	1-1/8-1
TCR09893	WH2/WH3 Die - 1-1/8-2	1-1/8-2
TCR09895	WH2/WH3 Die - 1-1/2H	1-1/2H
TCR09896	WH2/WH3 Die - 840H Wide	840H Wide

MECHANICAL CRIMPING TOOLS



Slingco's Mechanical Crimping Tools have been created to complete the variety of utility distribution service connections that need to be made on the line, pole, and home. Our crimping tools have been designed to provide reliable crimps installing full-tension or non-tension connectors.

Slingco's Mechanical Crimping Tool's 'D3' groove allows 'W' style die inserts for installing taps, splices, and terminal connectors. The 'W' die inserts lock securely and easily into place with the positive lock, spring-loaded die buttons. Slingco also offers a Mechanical Crimping Tool that accepts Kearney type dies.

Our Mechanical Crimping Tools also have ergonomic handles for comfortable use and maximum leverage when making critical connections.

Slingco Part No.	Tool Type	Crimp Force		Length		Weight	
		lb	kg	in	mm	lb	kg
TCR7002	O&D	9,000	4,082	25.75	65.4	7	3.175
TCR7004	BG&D	9,000	4,082	25.75	65.4	7	3.175
TCR08735	5/8 Nose Die & Kearney Seat (Accepts 'Kearney' type)	9,000	4,082	25.75	65.4	7	3.175

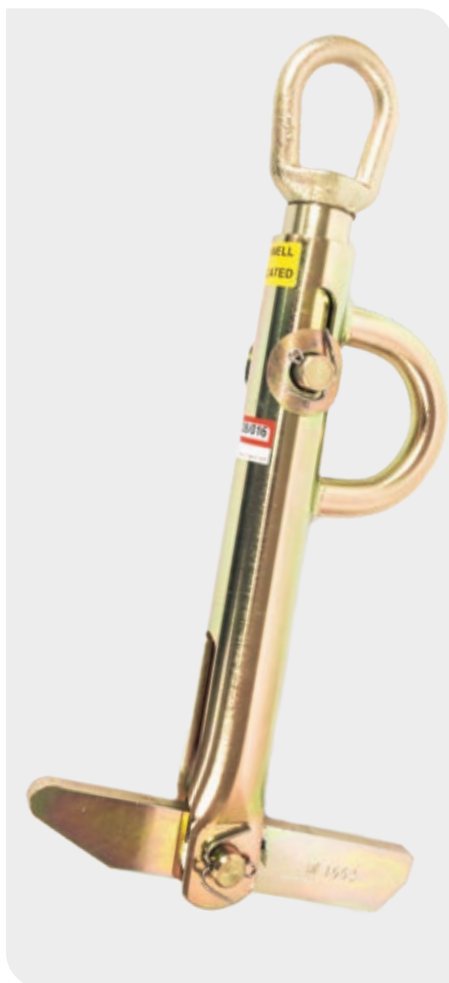
Slingco W-Die Sets (D3 Insert)

Slingco Part No.	Slingco Ref.	Burndy Equiv.
TCR7020	S6-K840	WK840
TCR7021	S6-BG	WBG
TCR7022	S6-O	WO
TCR7023	S6-247	W247
TCR7024	S6-249	W249
TCR7025	S6-161	W161
TCR7027	S6-163	W163
TCR7028	S6-164	W164
TCR7029	S6-165	W165
TCR7030	S6-166	W166
TCR7031	S6-167	W167
TCR7034	S6-237	W237
TCR7036	S6-239	W239
TCR7037	S6-241	W241
TCR7038	S6-243	W243
TCR7039	S6-245	W245
TCR7047	S6-C	WC
TCR7058	S6-25RT	W25RT
TCR7059	S6-26RT	W26RT

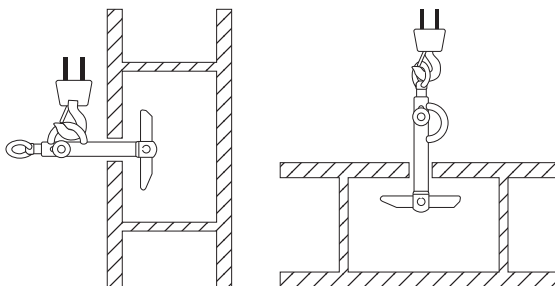
Slingco O-Die Sets (Kearney Seat)

Slingco Part No.	Slingco Ref.	Burndy Equiv.
TCR10117	O Die - 1/2	1/2
TCR10118	O Die - 1/4	1/4
TCR10119	O Die - 3/8	3/8
TCR10120	O Die - 5/8-1	5/8-1
TCR10121	O Die - 5/16	5/16
TCR10122	O Die - 9/16	9/16
TCR10123	O Die - 11/16	11/16
TCR10124	O Die - 19/32	19/32
TCR10125	O Die - 620	620
TCR10126	O Die - 635	635
TCR10127	O Die - 747	747
TCR10128	O Die - 781	781
TCR10129	O Die - 840	840
TCR10130	O Die - 845	845
TCR10131	O Die - B	B
TCR10132	O Die - 3/16	3/16
TCR10133	O Die - T	T
TCR10134	O Die - D	D
TCR10135	O Die - J	J
TCR10136	O Die - K	K
TCR10137	O Die - O	O
TCR10138	O Die - P	P
TCR10139	O Die - 737	737

REEL LIFTER



The Slingco Reel Lifter is a high capacity, compact unit that allows users in the utility construction industry to safely load, transport, and dispense wire and/or cable on-site. It is also used in many industrial applications to make moving and relocating reels in a warehouse easy. Now a task that normally used a team of three or four people can be done with just one, allowing the crew to operate more efficiently!



Makes handling large cable reels quick and easy, on-site or in warehouses.

- Rugged construction to lift and unroll reels
- Easy rotation to unroll cable
- Counterweighted bottom arm for easy insertion in reel
- Side lifting eye allows reels to be put into a rolling or non-rolling position
- Repair kits available

Reel Lifter

Slingco Part No.	Arbor Hole Min.		Arbor Hole Max.		Capacity		Weight		Length	
	in	mm	in	mm	lb	kg	lb	kg	in	mm
ZLD08729	2	50.8	4	101.6	3,000	1360.78	6.50	2.95	16.125	409.6
ZLD09186	3	76.2	6	152.4	5,000	2267.96	14.50	6.58	21.125	536.6
ZLD10807	3	76.2	6	152.4	12,000	5443.11	32.5	14.74	30.5	774.7
Reel Lifter Repair Kit										
ZLD09708	1,360.78kg (3,000lb) factory repair kit with extension springs, cable assemblies and all necessary pins for replacement of the interior cable system. Suitable for ZLD08729.									
ZLD09707	2,267.96kg (5,000lb) factory repair kit with extension springs, cable assemblies and all necessary pins for replacement of the interior cable system. Suitable for ZLD09186.									

HAND LINE TOOLS



3" Hand Line Block

Slingco's Hand Line Tools feature a 76.2mm (3") nylon fiberglass block, with a safe working load limit of 453.59 kg (1,000 lb), and a double locking snap with a safe working load limit of 2267.96 kg (5,000 lb).

Our 76.2mm (3") Hand Line Block's sheave can accommodate a 15.875 mm (0.625") diameter rope, and operates smoothly on the 12.7 mm (0.5") diameter axle and swivel bearings. The side opening feature allows quick access to remove the hand line.

The Hand Line Hook is made of manganese bronze, and is made for use with 12.7 mm (0.5") rope.

Slingco Part No.	Description	Working Load Limit	
		lb	kg
ZAB8725	3" Hand Line Block	1,000	453.59
HMI8556	Double Locking Snap	5,000	2,267.96
HMI6502	Hand Line Hook	272	123.38



Double Locking Snap Hook



Hand Line Hook

RUBBER BLANKET CLAMP PIN



Used to hold insulating blankets and other types of rubber coverups in place, the Slingco Blanket Clamp Pin is constructed of ultraviolet stabilized fiberglass reinforced polymer. Extra holes in the center of the body are used to grip conductors and prevent linehose from sliding. Holes have also been placed in the handles to enable attachment of warnings, tags, and/or flags. The handles of the pin are shaped to engage with the end ferrule of a clampstick (shotgun stick).

Slingco Part No.	Length		Jaw Opening		Weight		Note
	in	mm	in	mm	oz	g	
ZPE10962	9.5	241	5	127	5	141.5	
ZPE12136	9.5	241	5	127	5.4	153	with Hot Stick Clip

35KV JUMPER CLAMP



Slingco's Jumper Clamps are used as a part of jumper cable assemblies to bypass work areas when equipment is under repair or being upgraded. Jumper clamps are lightweight and impact resistant making them incredibly durable. We make inspection of the cable, ferrule, and clamp simple and easy via the transparent clamp body. The jaw of the Slingco Jumper Clamp and floating ring contact is made from a copper-based alloy.

Slingco Part No.	Main Line Range	Max. Continuous Amps	Threading	Length	Weight
ZSC09344	954 MCM (0.162 - 1.25)	400	5/8" - 11 threads per inch	11.5" (292mm)	2.5 lb (1.15 kg)
ZSC12110	477 MCM (0.162 - 0.9)	400	5/8" - 11 threads/inch	11.5" (292mm)	2.4 lb (1.09 kg)

NOTE: Slingco Jumper Clamps are sold individually. Slingco Jumper Clamps meet ASTM F2321 standard.

POLE STAND



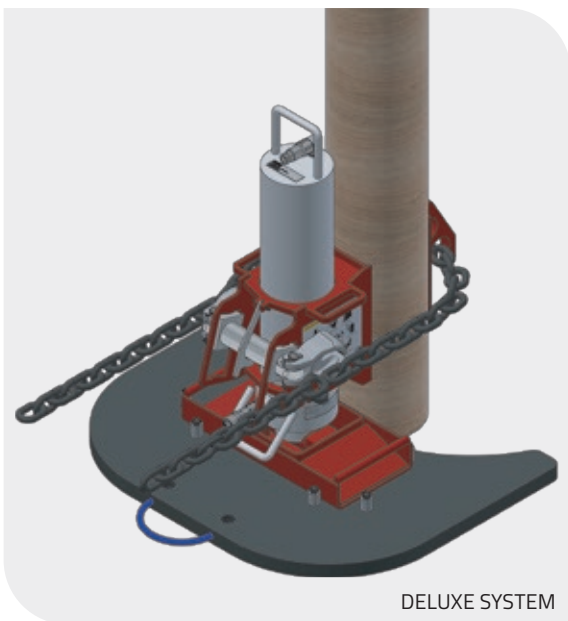
Slingco's pole stand is lightweight and compact making it easy to place, remove, and store on your truck or jobsite. The support leg's swing-and-lock design make moving and storing the Slingco pole stand a breeze. The pole stand positions the pole at an optimal height for easy and safe framing. The pole stand's capacity of 6,000 lb makes it capable of handling the majority of wood distribution poles. Its curved cradle allows for safe rotation of the pole for proper framing positioning. The pole stand's high visibility and durability make it a proven choice for any work location or environment.

Slingco Part No.	Description	Capacity		Height		Width		Weight	
		lb	kg	in	cm	in	cm	lb	kg
TPE09682	Pole Stand	6,000	2,722	23.75	60.33	30	76.2	32	14.5

- Lightweight and compact
- Quick swing-and-lock legs
- Positions poles for safe and comfortable framing

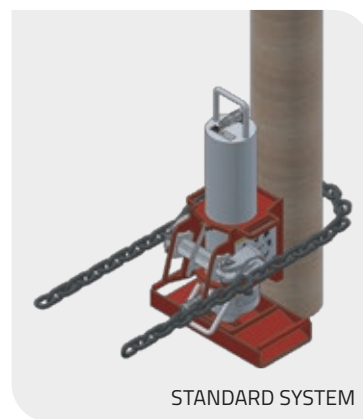


POLE PULLER



DELUXE SYSTEM

Slingco's pole puller is a must have to comply with today's safe working practices, reducing the potential for boom damage and greatly reducing the potential of personal injury. The pole puller is easily assembled and disassembled. The standard pole puller system is composed of four pieces and the deluxe system six pieces. These configurations make the Slingco pole puller easy to handle and lighter weight than typical units on the market. The Slingco Deluxe Pole Puller system includes the pole puller pad and back plate weldment. The pole puller pad has studs which keep the base plate in the optimum position when pulling poles. The back plate weldment has angled teeth to increase hold on the pole during extraction. Slingco's pole puller offers a low point of attachment making it easy to remove even broken or cut poles.



STANDARD SYSTEM

Slingco Part No.	Description	Max. Operating Pressure		Recommended Flow Rate		Lift at Max. Pressure		System Total Weight	
		PSI		GPM		lb	kg	lb	kg
TPE09386	Deluxe Pole Puller System	2,800		4 – 8		50,120	22,734	157	71.2
DELUXE Pole Puller System consists of: hydraulic cylinder*, chain, base weldment, swivel assembly PLUS back plate weldment, and pole puller pad. *hydraulic cylinder comes with flush face fittings installed.									
TPE10551	Standard Pole Puller System	2,800		4 – 8		50,120	22,734	128	58
STANDARD Pole Puller System consists of: hydraulic cylinder*, chain, base weldment, swivel assembly. *hydraulic cylinder comes with flush face fittings installed.									
TPE09378	Pole Puller Pad							23	10.43
TPE09367	Back Plate Weldment							6	2.72

DIRT TARPS



Slingco's range of heavy-duty, re-usable dirt tarps have been created with safety in mind. Keeping workers out of awkward, injury-prone positions is better for their long-term health and the company's bottom line. Dirt tarps have become a must-have product at utility construction sites. You can find Slingco Dirt Tarps being used at pole change-outs, transformer terminations, pedestals, as well as underground gas, telephone, and other underground utility applications.

In fact, with the ability to move crushed rock, sand, dirt, wet cement, dig spoils, and other contaminated soil, there are few reasons NOT to have a Slingco Dirt Tarp on the project!

Slingco Part No.	Tarp Dimensions		Maximum Capacity	
	ft	m	lb	kg
ZLD10015	10 x 10	3 x 3	5,000	2,267
ZLD10016	8 x 8	2.44 x 2.44	5,000	2,267
ZLD10793	7 x 7	2.13 x 2.13	4,000	1,814
ZLD10792	6 x 6	1.83 x 1.83	4,000	1,814

RATCHET CUTTERS (ACSR)



The Slingco ACSR Ratchet Cutter is designed to cut hard cables cleanly and smoothly. The ratchet design provides leverage, increasing cutting force with each open and close of the handles. Makes cutting cable easier compared to manual cutters.

The handles surfaces are designed to allow a firm, secure grip. The ratcheting action makes these cutters easy to operate even in limited spaces with just moderate pressure.

Do not use on energized lines.

- For cutting ACSR cable
- Smooth ratchet operation
- Cuts up to 954 ACSR and other hard cable cleanly

Slingco Part No.	Description
TCU09280	Hard Cable (ACSR) Ratchet Cutter

STAY WIRE DISPENSER



Slingco's Stay Wire Dispenser saves linemen time, effort, and keeps them safe. Efficiently dispense and take up excess stay wire from a permanently mounted source. Operation of the dispenser is kept smooth thanks to the high load sealed ball bearing. The Stay Wire Dispenser is constructed of high strength steel coated in a durable black and yellow finish to enable the unit to endure the harsh outdoor environment.

Easy to operate release knobs allow for quick and easy loading and unloading.

- Handles Stay Wire OD up to 1/2"
- Permanently mounts to truck or other surface
- Smooth pay-out operation thanks to high load sealed bearings

Slingco Part No.	Max. Wire Size		Coil Width Capacity		Coil Diameter Range		Weight	
	in	mm	in	mm	in	mm	lb	kg
ZWM09207	0.5	12.7	4.75	120	22-31	559-787	45	20.5
ZWM12496	0.5	12.7	8.75	222	32 - 36	813-914	54	24.5

Slingco Part No.	Description
ZWM09741	Stay Wire Knob Replacement Kit - contains all parts needed to replace securement knobs

TRIPLEX DISPENSER



The Slingco Triples Dispenser is designed to be permanently mounted for the efficient dispensing of triplex. Slingco's triplex dispenser is designed to keep linemen safe while saving time and effort.

Constructed of high strength steel coated in a durable black and yellow finish allows the unit to endure the harsh outdoor environments. The high load sealed ball bearing keeps operation and rotation smooth.

Easily adjust break tension with a 3/4" wrench. Simple pull knob operation for loading of triplex coils.

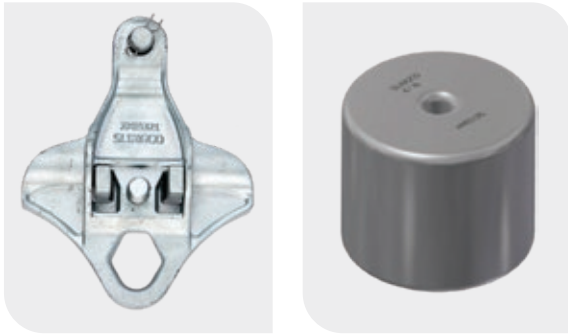
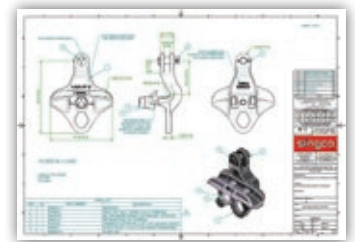
Wire guide allows easy payout and rewinding of triplex.

Slingco Part No.	Coil OUTSIDE Diameter Range		Coil INSIDE Diameter Range		Coil Width Capacity		Weight	
	in	mm	in	cm	in	cm	lb	kg
ZWM09903	26 - 32	66 - 81.3	14 - 20	35.5 - 50.8	10.25	26	54	24.5



Slingco suspension conductor clamps provide safe and quick installation and removal of the conductor when attached to the insulator. A single fastener fully opens and closes the jaw. The clamps come in a variety of sizes to accommodate conductors from 0.16 to 1.50 inch diameter, and loadings of up to 18,000 lbs. To prevent loss, all moving parts of the clamps are captive.

Depending on size, the clamps are either made from heat treated aluminium alloy 356-T6 or ductile iron 60-45-15 and hot dip galvanised for corrosion resistance.



Slingco Part No.	Range (in)		Material	A		B		C		D		Load	
	in	mm		in	mm	in	mm	in	mm	in	mm	lb	kg
ZMI6320	0.16 - 0.43	4.0-10.9	Ductile iron	5.36	136	5.51	140	1.16	29	0.63	16	10,000	4,535.9
ZMI6321	0.30 - 0.70	7.6-17.8	Ductile iron	8.03	204	6.34	161	1.38	35	0.63	16	18,000	8,164.7
ZMI6322	0.50 - 0.687	12.7-17.4	Aluminium alloy 356-T6	6.22	158	6.89	175	1.61	41	0.63	16	12,000	5,443.1
ZMI6323	0.68 - 1.00	17.4-25.4	Aluminium alloy 356-T6	8.37	212	6.89	175	1.73	44	0.63	16	12,000	5,443.1
ZMI6324	1.00 - 1.313	25.4-33.4	Aluminium alloy 356-T6	9.53	242	6.97	177	1.74	44	0.63	16	12,000	5,443.1

THE SOLUTION APPROACH

HOW WE ARE DIFFERENT

We work with Utilities and Contractors through distributors to provide a cost-saving approach to Pole Line Hardware.

Instead of simply offering a range that's similar to what's already in use, we offer an equivalent to standards-compliant products, manufactured to the exact specifications you need.

This makes transition to the Slingco brand easy, but also gives standards engineers the opportunity to

work with us on new projects and designs.

Once the Pole Line hardware is approved, we keep the product in stock for immediate shipping whenever needed.

This is a new approach, already successfully introduced into other industries by Slingco, that we're now delighted to bring to the OHL and related markets.

10K DRIVE WRENCH ASSEMBLY

FOR EFFICIENT INSTALLATION OF SCREW ANCHORS

Our complete tool system for installation of screw anchors. The system consists of:

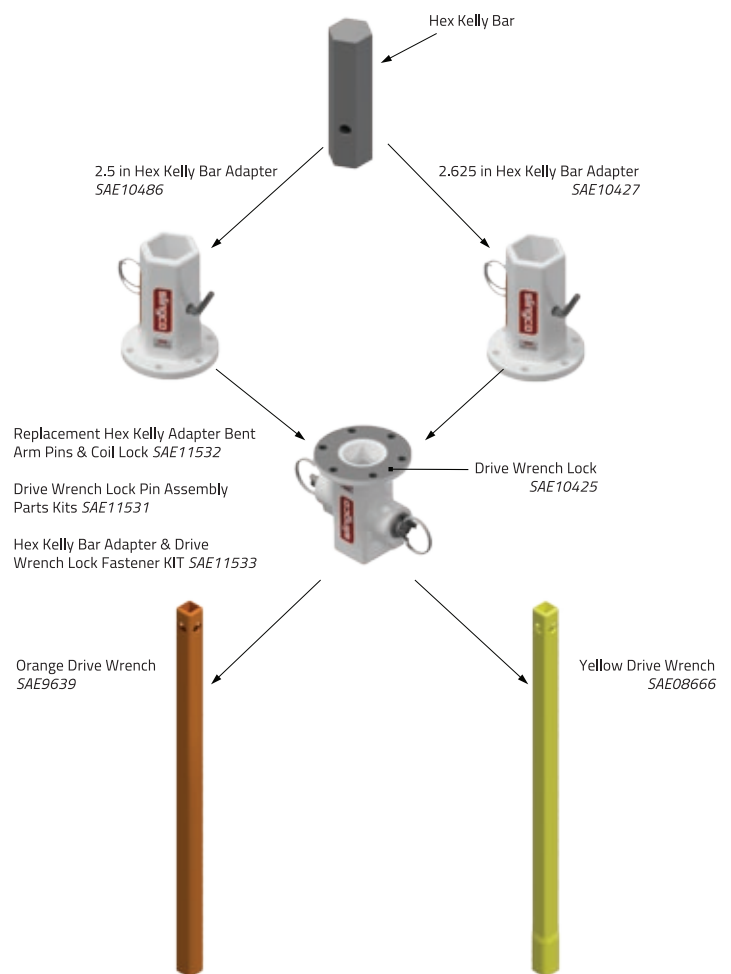
- Orange Drive Wrench (#SAE09639)
- Yellow Drive Wrench (#SAE08666)
- Drive Wrench Lock (#SAE10425)
- 2.5 in Hex Kelly Bar Adapter (#SAE10486)
- 2.625 in Hex Kelly Bar Adapter (#SAE10427)

Slingco's 10k Drive Wrench Assembly is a complete tool system for the installation of screw anchors.

Designed to connect the square anchor of a drive motor to the hexagonal Kelly Bar of a bucket truck, it comprises two Drive Wrenches to suit different sized anchor rods; a Drive Wrench lock; and two Kelly Bar Adapters to fit the most common drive bar dimensions (2.5 in and 2.625 in).

The Drive Wrench Lock attaches to the Kelly Bar Adapter and makes the installation of the Anchor Rod much easier. The three-position rings of the lock assembly ensure easy capture of the Drive Wrench and Anchor Rod, holding them securely while under torque and releasing them when needed.

The Drive Wrenches are designed to allow Anchor Rods to telescope inside, and secure to, the Drive Wrench Lock. The Drive Wrench transfers the torque from the Drive Motor to the Screw Anchor, and are rated to 10,000 ft-lbs.



HEX KELLY BAR ADAPTERS



Slingco's Hex Kelly Bar Adapters are a key component in the Drive Wrench Assembly. The adapters are used to connect the Drive Wrench Lock Assembly to the Kelly Bar of the bucket truck. There are two versions available which fit the most common drive bar dimensions.

Slingco Part No.	Kelly Bar Shape	Adapter dimensions						Weight each	
		X		Y		Z		lb	kg
SAE10486	HEX	2.5	63.5	4.25	108	8.25	210	16.3	7.39
SAE10427	HEX	2.625	66.7	4.25	108	8.25	210	16.7	7.57

DRIVE WRENCH LOCK ASSEMBLY



Slingco's Drive Wrench Lock Assembly attaches to the adapter and makes the installation of the anchor rod much easier. The three-position rings allow for easy capture of the Drive Wrench and the anchor rod, holding them securely while under torque, and releasing each when needed.

Slingco Part No.	Description	Weight	
		lb	kg
SAE10425	Drive Lock Assembly	18.4	8.35

DRIVE WRENCHES



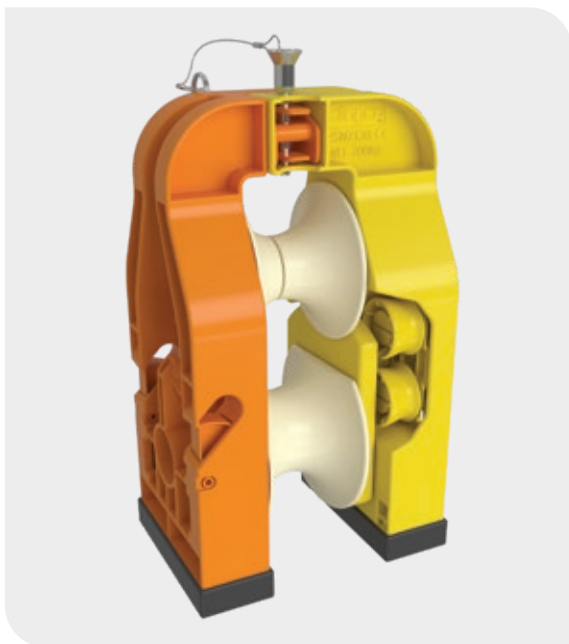
Slingco's Drive Wrenches are designed to allow anchor rods to telescope inside them, and securing to the Drive Wrench Lock Assembly. The Drive Wrench transfers the torque from the drive motor to the screw anchor.

Rated to 10,000 ft-lb of torque, Slingco's Drive Wrenches are tough and can handle anchor installs in tough environments.

Slingco Part No.	Description	Hub Size		Shaft Size	
		in	mm	in	mm
SAE09639	10,000ft-lb Orange Drive Wrench	2.25	57	1.375	35
SAE08666	10,000ft-lb Yellow Drive Wrench	2.5	63.5	1.5	38

57 lb (28.85 kg) is the weight of each Drive Wrench

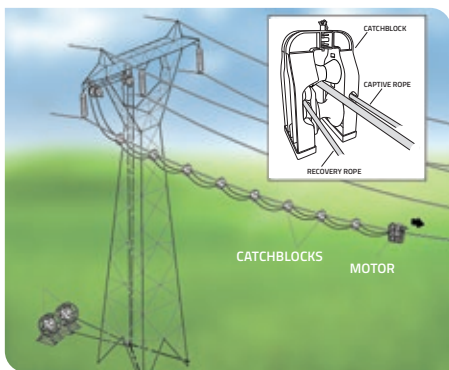
CATCHBLOCK OHL CATENARY ROLLER



The challenges faced by the OHL industry due to the growing number of infrastructure projects built beneath existing transmission and distribution networks - alongside increasingly stringent OHL regulations - can make maintenance costly, time-consuming and challenging. Lightweight, robust and easy to deploy, CatchBlock helps overcome these issues, increasing efficiency and reducing costs.

CatchBlock is an innovative overhead line (OHL) catenary roller system. Designed to deploy a two-rope system, it allows the recovery of broken conductors without the need to take possession of client/third party property or infrastructure.

Though the majority of off-the-shelf systems offer efficient single rope deployment, they frequently fail to meet the specifications required by third party clients who own property below overhead conductors. The CatchBlock system not only satisfies the most demanding requirements, but also - because it removes the need to close down essential infrastructure for conductor repairs or in the event of an emergency - its use means that estimating the costs of maintenance and refurbishment schemes is made far easier and more accurate.



KEY PRODUCT FEATURES

- Ropes are secured in position in the CatchBlock frame, avoiding the need for ferrules to be moulded or bonded to their outer surface
- Both ropes are tensioned simultaneously, hence the CatchBlock does not turn or flip
- Ropes are controlled to avoid build-up of slack in any sub-spans
- Both ropes are identical and have the same external marking to indicate where the CatchBlock is to be fitted
- One rope is contained in the main housing of the CatchBlock, the frame needs to be opened to allow the second rope to be installed

CONDUCTOR REPLACEMENT ROLLER



The Conductor Replacement Roller (CRR) provides a simple, conductor-deployed protection system using a lightweight aramid rope.

The CRR unit enables the safe exchange of conductors in three easy steps:

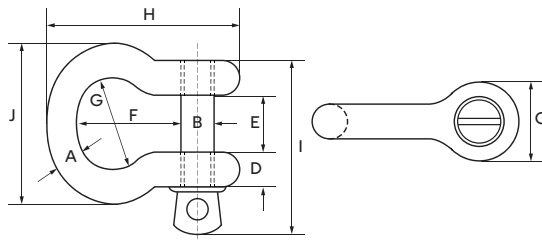
1. Laying out the pulling cable, e.g. with an electric pulling robot.
2. Tensioning the CRR Block assembly.
3. Feeding a new conductor through the cable pulleys of the CRR Block.

The CRR rollers have spring loaded gripping feature to secure the rope laterally without impinging any rotational movement as the rollers rotate around the axis of the conductor. Considerable effort has been made to reduce the complexity of the design to provide a simple mechanism to hold the rope and then connect around the conductor.

Designed for rapid deployment and secure connection the external locking mechanism can be inspected from ground level.

- 30% glass filled Nylon 6 from bespoke mould tooling
- Bespoke design incorporates aperture of 65mm to accept smooth passage of joints and connectors
- Type registered to industry standards
- Non conductive through use of insulating materials

GREEN PIN STANDARD BOW SHACKLES G-4161

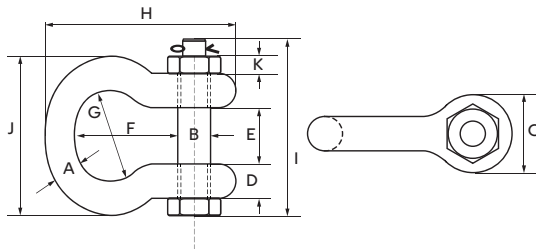


With screw collar pin.

- Material: Body and pin high tensile steel. Grade 6, quenched and tempered
- Finish: Hot dipped galvanised
- Safety factor: MBL equals 6 x WLL

Slingco Part No.	WLL (tons)	Bow dia A (mm)	Pin dia B (mm)	Eye dia C (mm)	Eye width D (mm)	Inside width E (mm)	Inside length F (mm)	Bow width G (mm)	Length H (mm)	Bow length I (mm)	Bow width J (mm)
SHD08915	0.33	5	6	12	5	9.5	22	16	36	29.5	26
SHD08916	0.5	7	8	16.5	7	12	29	20	48.5	38	34
SHD08917	0.75	9	10	20	9	13.5	32	22	56	46.5	40
SHD08918	1	10	11	22.5	10	17	36.5	26	63.5	54	46
SHD08919	1.5	11	13	26.5	11	19	43	29	74	59.5	51
SHD08920	2	13.5	16	34	13	22	51	32	89	73	58
SHD08921	3.25	16	19	40	16	27	64	43	110	89	75
SHD08922	4.75	19	22	46	19	31	76	51	129	103	89
SHD08923	6.5	22	25	52	22	36	83	58	144	119	102
SHD08924	8.5	25	28	59	25	43	95	68	164	137	118
SHD08925	9.5	28	32	66	28	47	108	75	185	153	131
SHD08926	12	32	35	72	32	51	115	83	201	170	147
SHD08927	13.5	35	38	80	35	57	133	92	227	186	162
SHD08928	17	38	42	88	38	60	146	99	249	203	175
SHD08929	25	45	50	103	45	74	178	126	300	243	216
SHD08930	35	50	57	111	50	83	197	138	331	272	238
SHD08931	42.5	57	65	130	57	95	222	160	377	310	274
SHD08932	55	65	70	145	65	105	260	185	433	344	310

GREEN PIN STANDARD BOW SHACKLES G-4163

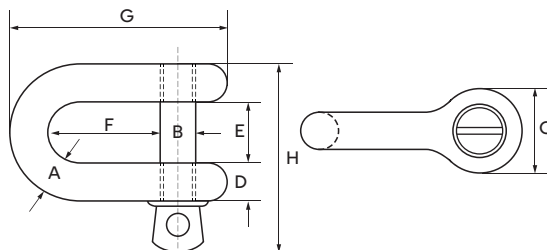


With safety bolt.

- Material: Body and pin high tensile steel. Grade 6, quenched and tempered
- Finish: Hot dipped galvanised
- Safety Factor: MBL equals 6 x WLL

Slingco Part No.	WLL (tons)	Bow dia A (mm)	Pin dia B (mm)	Eye dia C (mm)	Eye width D (mm)	Inside width E (mm)	Inside length F (mm)	Bow width G (mm)	Length H (mm)	Bow length I (mm)	Bow width J (mm)	Width K (mm)
SHD08933	0.5	7	8	16.5	7	12	29	20	48.5	42	34	4
SHD08934	0.75	9	10	20	9	13.5	32	22	56	50	40	5
SHD08935	1	10	11	22.5	10	17	36.5	26	63.5	60	46	8
SHD08936	1.5	11	13	26.5	11	19	43	29	74	67	51	11
SHD08937	2	13.5	16	34	13	22	51	32	89	82	58	13
SHD08938	3.25	16	19	40	16	27	64	43	110	98	75	17
SHD08939	4.75	19	22	46	19	31	76	51	129	114	89	19
SHD08940	6.5	22	25	52	22	36	83	58	144	130	102	22
SHD08941	8.5	25	28	59	25	43	95	68	164	150	118	25
SHD08942	9.5	28	32	66	28	47	108	75	185	166	131	27
SHD08943	12	32	35	72	32	51	115	83	201	178	147	30
SHD08944	13.5	35	38	80	35	57	133	92	227	197	162	33
SHD08945	17	38	42	88	38	60	146	99	249	202	175	19
SHD08946	25	45	50	103	45	74	178	126	300	249	216	23
SHD08947	35	50	57	111	50	83	197	138	331	269	238	26
SHD08948	42.5	57	65	130	57	95	222	160	377	301	274	29
SHD08949	55	65	70	145	65	105	260	185	433	330	310	32
SHD11266	85	75	83	162	73	127	329	190	527	380	340	39

GREEN PIN STANDARD DEE SHACKLES G-4151

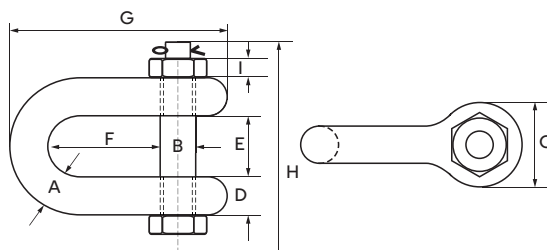


With screw collar pin.

Material: Body and pin high tensile steel. Grade 6, quenched and tempered
 Finish: Hot dipped galvanised
 Safety Factor: MBL equals 6 x WLL

Slingco Part No.	WLL (tons)	Bow dia A (mm)	Pin dia B (mm)	Eye dia C (mm)	Eye width D (mm)	Inside width E (mm)	Inside length F (mm)	Length G (mm)	Bolt length H (mm)
SHD11267	0.33	5	6	12	5	9.5	19	33	29.5
SHD08951	0.5	7	8	16.5	7	12	22	41.5	38
SHD08952	0.75	9	10	20	9	13.5	26	50	46.5
SHD08953	1	10	11	22.5	10	17	32	59	54
SHD08954	1.5	11	13	26.5	11	19	37	68	59.35
SHD08955	2	13.5	16	34	13	22	43	81	73
SHD08956	3.25	16	19	40	16	27	51	97	89
SHD08957	4.75	19	22	46	19	31	59	112	103
SHD08958	6.5	22	25	52	22	36	73	134	119
SHD08959	8.5	25	28	59	25	43	85	154	137
SHD08960	9.5	28	32	66	28	47	90	167	153
SHD08961	12	32	35	72	32	51	94	180	170
SHD08962	13.5	35	38	80	35	57	115	209	186
SHD08963	17	38	42	88	38	60	127	230	203
SHD08964	25	45	50	103	45	74	149	271	243
SHD08965	35	50	57	111	50	83	171	305	272
SHD08966	42.5	57	65	130	57	95	190	345	310
SHD11268	55	65	70	145	65	105	203	376	344

GREEN PIN STANDARD DEE SHACKLES G-4153



With safety bolt.

Material: Body and pin high tensile steel. Grade 6, quenched and tempered
 Finish: Hot dipped galvanised
 Safety Factor: MBL equals 6 x WLL

Slingco Part No.	WLL (tons)	Bow dia A (mm)	Pin dia B (mm)	Eye dia C (mm)	Eye width D (mm)	Inside width E (mm)	Inside length F (mm)	Length G (mm)	Bolt length H (mm)	Nut width I (mm)
SHD11269	2	13.5	16	34	13	22	43	81	82	13
SHD08968	3.25	16	19	40	16	27	51	97	98	17
SHD08969	4.75	19	22	46	19	31	59	112	114	19
SHD08970	6.5	22	25	52	22	36	73	134	130	22
SHD08971	8.5	25	28	59	25	43	85	154	150	25
SHD08972	9.5	28	32	66	28	47	90	167	166	27
SHD08973	12	32	35	72	32	51	94	180	178	30
SHD08974	13.5	35	38	80	35	57	115	209	197	33
SHD08975	17	38	42	88	38	60	127	230	202	19
SHD08976	25	45	50	103	45	74	149	271	249	23
SHD08977	35	50	57	111	50	83	171	305	269	26
SHD08978	42.5	57	65	130	57	95	190	345	301	29
SHD08979	55	65	70	145	65	105	203	376	330	32
SHD08980	85	75	83	162	73	127	229	427	380	39

CABLE PULLING GRIPS AND CABLE SUPPORT GRIPS

ASSESSMENT OF SUITABILITY

There are many factors that must be taken into account when assessing the suitability of a cable grip for a proposed application and trying to calculate a safe working load. These include:

- Size of cable grip in relation to size/shape of gripped object(s)
- Stability of object(s) when gripped
- Grip surface of object(s)
- Resistive force of object(s)
- Anticipated path of movement, including possible obstructions
- Approximate breaking strength of the cable grip
- Condition of cable grip
- Suitability and compatibility of any attachments used
- Environment / operating conditions
- Persons at risk

If you have any questions regarding suitability for any particular application please call the distributor who supplied the cable grip or our in-house Technical Department.

Please note: Slingco cable grips must be double steel banded securely before being pulled.

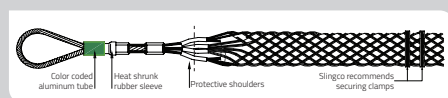
LATTICE DIMENSIONS

Lattice dimensions shown are as fitted to a nominal diameter of cable and prior 'free length' may be slightly longer than stated.

APPROXIMATE BREAK LOAD

This is the calculated average based on actual testing done by Slingco. Approximate break loads are quoted as a guide only.

TYPICAL CONFIGURATIONS



SAFE WORKING LOAD

Application load is normally calculated to be reduced by at least a factor of 5x the Approximate break load. Due to the wide variety of application parameters, the end user must apply a sensible safety factor to suit the safety requirements for the conditions of use.

The Safe Working Load (SWL) of a Slingco cable grip will depend on the Factor of Safety (FOS) applied to the Minimum Breaking Load.

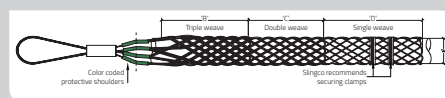
FACTOR OF SAFETY (FOS)

Where the operational risk is considered to be normal, it is recommended that a FOS of 5 be applied, for a high risk operation a FOS of at least 10 should be considered. It is impossible to catalogue or guarantee a safety factor that will apply for all applications.

Approximate Break Loads stated on any certification, the recommended Factors of Safety, and any implied or stated fitness for purpose, are all only applicable when the cable grip is as new and unused.

A 20% variance in break loads must be allowed for when selecting a cable grip; a suitable swivel must be used if there is 'twist' in the cable.

Torsional stress must be dealt with when using grips for line pulls and wire splices. When twisting forces are present use a swivel that rotates under load to release torsional stress.



Cable Grip Safety Information

- Ensure that the cable grip mesh fits conductor correctly
- Ensure that the conductor fits up to the mid-point of the protective shoulder
- Clamp the ends of the cable grip when attaching the conductor. We recommend between 1 1/4" and 2 1/4" from the end of the cable grips
SECURE CLAMPING MUST BE USED ON SLINGCO CABLE GRIPS
- Never modify or attempt to repair any grip
- Ensure proper maintenance of the cable grip. If in doubt call 01706 855558
- Check the condition of the cable grip, and that it is the correct size for the intended application - do not exceed the rated capacity
- Grips that are worn, bent or otherwise damaged should not be used
- Grips are only to be used for temporary installations
- Pulling devices should only be attached via the pulling eye
- Cable grips must only be fitted and used by trained competent person(s)



SLINGCO CABLE GRIPS MUST NOT BE USED TO THEIR APPROXIMATE BREAKING STRENGTH. A SENSIBLE SAFETY FACTOR MUST ALWAYS BE USED. IF IN DOUBT CONTACT THE MANUFACTURER OR THE DISTRIBUTOR THAT SUPPLIED THE GRIP!

If you have any questions regarding suitability for any particular application please call 01706 855558



IMPORTANT TECHNICAL INFORMATION

SINGLE AND DOUBLE EYE CABLE GRIP INSTRUCTIONS

PLEASE NOTE: The condition of the cable grip should always be checked prior to use. The correct size of grip should always be used for the intended application. The rated capacity of the grip should never be exceeded. Grips that are worn, bent or otherwise damaged should not be used.



1 Select the correct grip for the diameter of the conductor.



2 Prior to use, the lattice at the end of the grip needs to be widened. This can be easily achieved by pressing the end of the grip against a hard surface, which causes the lattice to expand.



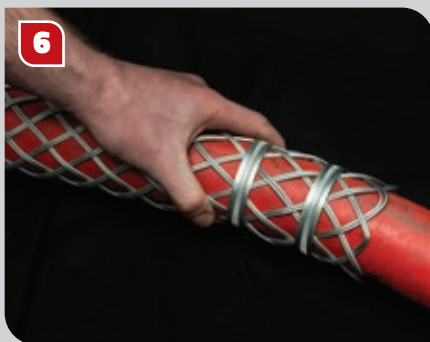
3 The grip should then be pushed over the end of the conductor...



4 ...and pushed over the conductor.



5 The grip then needs to be pushed along so that all the lattice is in contact with the conductor.



6 Once the cable grip is in place on the conductor, two clamps should be fitted to the end of the grip (as shown). We recommend between 1 ¼" (30mm) and 2 ¼" (55mm) away from the end of the cable grip.



7 Tape should then be wound around the end of the cable grip furthest away from the eye ends.



8 This will prevent the cable grip from snagging when in use.

LACE UP CABLE GRIP INSTRUCTIONS

PLEASE NOTE: The images shown here use double weave cable grips. When lacing single weave cable grips please use single wire lace; use double-laced for double weave cable grips; and use triple-laced for triple weave cable grips.



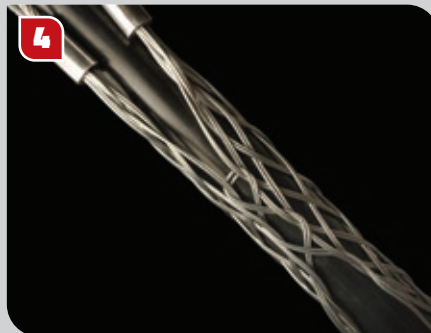
1 Start the lacing from the 'eye' end or anchoring end of the cable grip.



2 Thread the lace through the first two loops of the split and pull through until the laces are centered at this point.



3 Don't pull the lace too tight at this stage. Leave a space between adjoining loops roughly equal to the width of one diamond of the mesh.



4 Continue down the length of the cable grip. Try to maintain equal tension and equal spacing throughout as this leads to a more stable and equal grip.



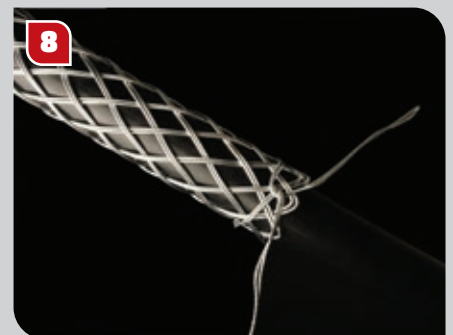
5 As you continue down the length, pull the open sides of the grip as wide apart as required.



6 Try to achieve an even and neat lace-up as this assists with the strength of the grip when pulling.



7 Finally, tie the ends of the lace once or twice round the end of the cable grip twisting the ends together securely. Excess lace can be cut off.



8 Add any additional support as required – banding is recommended. The Slingco cable grip is now ready to use.

FOR ANY ENQUIRIES CALL TODAY ON
+44 [0]1706 855558

Slingco Limited
Gateway Business Park, New Hall Hey Road, Rawtenstall, BB4 6JG, England
Tel: +44 [0]1706 855558 · sales@slingco.com



slingco.com

This document is for marketing purposes only. The information contained herein is presented as general information and no representation or warranty is expressly or impliedly given as to its accuracy, completeness or correctness. It does not constitute part of a legal offer or contract. For technical specifications, please contact Slingco Limited. *March 2026 - v3.2*