

FIGURE OF 8 'SWING LINK' CONNECTOR

⚠ WARNING

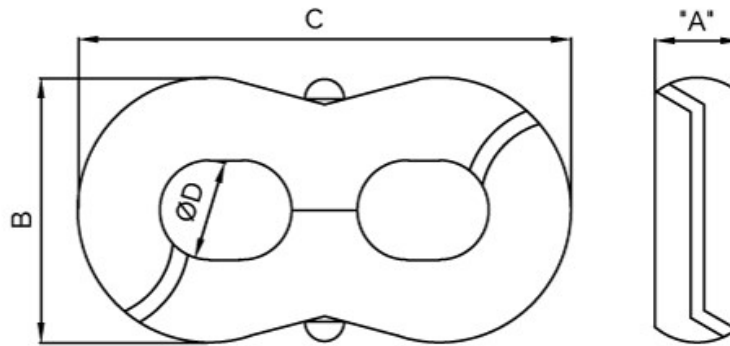
Cancer and Reproductive Harm: www.P65Warnings.ca.gov



KEY FEATURES

- ✓ Easy to apply
- ✓ Strong Connection

The Figure of 8 Swing Link Connector is an easy-to-use high strength connector used to join together two cable grips.



Slingco Part No.	A (mm)	A (in)	B (mm)	B (in)	C (mm)	C (in)	Ø D (mm)	Ø D (in)	Approx. Break Load (kg)	Approx. Break Load (lb)
SWI4281	13	0.50	41	1.62	83	3.25	16	0.62	4,537	10,000
SWI4282	19	0.75	62	2.43	127	5.00	24	0.93	8,167	18,000

This information is for marketing purposes only. The details contained herein is presented as general information and no representation or warranty is expressly or impliedly given as to its accuracy, completeness or correctness. It does not constitute part of a legal offer or contract. For technical specifications, please contact Slingco America, Inc.

Dimensions

The figures shown are indicative only. Fully dimensioned data-sheets are available on request. Nominal figures/actuals are as per data-sheet with tolerances of +/- 10%. Please contact us if you have any questions.

Range dimension overlaps If the cable, rope or hose you have lies where ranges overlap, e.g. 1" when sizing is 0.5-1.00 and 1.00-1.5 we recommend that you select your cable grip to achieve break load first. If tensile strengths are equal or both adequate, choose the smaller of the two. Please contact us if you have any questions.



GET IN TOUCH

☎ 1 888 685 9478

✉ sales@slingcoamerica.com

FIGURE OF 8 'SWING LINK' CONNECTOR



Slingco America Inc, 3100 Jonquil Drive SE, Smyrna, Georgia, 30080, USA t: 1 888 685 9478

GET IN TOUCH



1 888 685 9478



sales@slingcoamerica.com