

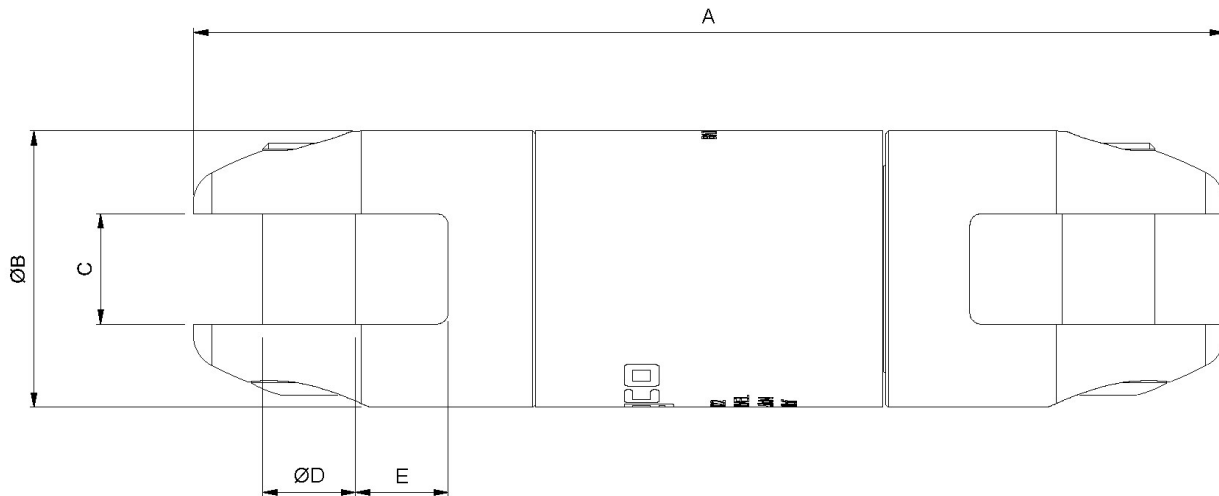
LINE PULLING SWIVEL - GALVANIZED



KEY FEATURES

- ✓ releases torsion
- ✓ Prevents damage to cable or grip
- ✓ suitable for underground or overhead applications
- ✓ straight line pulling only

Slingco Line Swivels are designed to the highest specifications for underground and overhead pulling applications. All swivels are stringently quality tested and inspected to ensure optimum reliability and performance.



| Slingco Part No. | Safe Working Load - 3:1 (lb) | Safe Working Load - 5:1 (lb) | A Length (in) | Ø B (in) | C (in) | Ø D Pin (in) | E Recess (in) | Weight (lb) |
|------------------|------------------------------|------------------------------|---------------|----------|--------|--------------|---------------|-------------|
| ZSW2649 | 4,000 | 2400 | 4.74 | 1.26 | 0.61 | 0.37 | 0.37 | 1.01 |
| ZSW2929 | 8,000 | 4,800 | 5.38 | 1.5 | 0.63 | 0.61 | 0.43 | 1.75 |
| ZSW6122 | 10,000 | 6,000 | 7 | 1.87 | 0.75 | 0.63 | 0.63 | 3.72 |
| ZSW6123 | 16,000 | 9,600 | 10.2 | 2.44 | 1 | 1.12 | 0.87 | 9.19 |
| ZSW2857 | 30,000 | 18,000 | 11.13 | 2.5 | 1 | 1.13 | 0.87 | 10.44 |

Note
3:1 factor of safety and 5:1 factor of safety provided for reference only



GET IN TOUCH

1 888 685 9478
sales@slingcoamerica.com

LINE PULLING SWIVEL - GALVANIZED

| Slingco Part No. | Safe Working Load - 3:1 (kN) | Safe Working Load - 5:1 (kN) | A Length (mm) | Ø B (mm) | C (mm) | Ø D Pin (mm) | E Recess (mm) | Weight (kg) |
|------------------|------------------------------|------------------------------|---------------|----------|--------|--------------|---------------|-------------|
| ZSW2649 | 17.8 | 10.6 | 120.5 | 32 | 15.5 | 13.3 | 9.5 | 0.46 |
| ZSW2929 | 35.5 | 21.3 | 136.6 | 38 | 16 | 15.5 | 11 | 0.80 |
| ZSW6122 | 44.5 | 26.7 | 178 | 47.6 | 19.05 | 16 | 16 | 1.69 |
| ZSW6123 | 71.2 | 42.7 | 259 | 62 | 25.4 | 28.5 | 22 | 4.17 |
| ZSW2857 | 134 | 80 | 282.6 | 63.5 | 25.4 | 28.62 | 22 | 4.74 |

Note

3:1 factor of safety and 5:1 factor of safety provided for reference only

| Flexible Eye MU | Revolving Eye | Approx. breaking strength of cable grip (lb) | Approx. breaking strength of cable grip (kN) | Cable grip color code | Size range O.D. (in) | Size range O.D. (mm) | Recommended swivel | Safe working load of swivel at 3:1 (lb) | Safe working load of swivel at 3:1 (kN) |
|-----------------|---------------|--|--|-----------------------|----------------------|----------------------|--------------------|---|---|
| ZCS1710 | ZCS2177 | 7,000 | 31.1 | Dark green | 0.25 - 0.50 | 06-Dec | ZSW2649 | 4,000 | 17.8 |
| ZCS1711 | ZCS2178 | 10,500 | 46.7 | Brown | 0.50 - 0.75 | Dec-19 | ZSW2929 | 5,000 | 22.2 |
| ZCS1712 | ZCS2179 | 14,100 | 62.7 | Light blue | 0.75 - 1.00 | 19 - 25 | ZSW2929 | 5,000 | 22.2 |
| ZCS1713 | ZCS2180 | 25,000 | 111.2 | Gold | 1.00 - 1.25 | 25 - 32 | ZSW6122 | 10,000 | 44.5 |
| ZCS1714 | ZCS2181 | 31,000 | 137.9 | Black | 1.25 - 1.50 | 32 - 38 | ZSW6122 | 10,000 | 44.5 |
| ZCS1715 | ZSC2182 | 31,000 | 137.9 | Red | 1.50 - 1.75 | 38 - 44 | ZSW6122 | 10,000 | 44.5 |
| ZCS1716† | ZSC2183* | 43,000*-49,000† | 191.3 - 218 | Dark blue | 1.75 - 2.25 | 44 - 57 | ZSW6123 | 16,000 | 71.2 |

Note

The above is intended as a rough guide. The recommended working load should be determined by the competent person(s) using the cable grip and/or Slingco swivel.

This information is for marketing purposes only. The details contained herein is presented as general information and no representation or warranty is expressly or impliedly given as to its accuracy, completeness or correctness. It does not constitute part of a legal offer or contract. For technical specifications, please contact Slingco America, Inc.

Dimensions

The figures shown are indicative only. Fully dimensioned data-sheets are available on request. Nominal figures/actuals are as per data-sheet with tolerances of +/- 10%. Please contact us if you have any questions.

Range dimension overlaps If the cable, rope or hose you have lies where ranges overlap, e.g. 1" when sizing is 0.5-1.00 and 1.00-1.5 we recommend that you select your cable grip to achieve break load first. If tensile strengths are equal or both adequate, choose the smaller of the two. Please contact us if you have any questions.



GET IN TOUCH

1 888 685 9478

sales@slingcoamerica.com