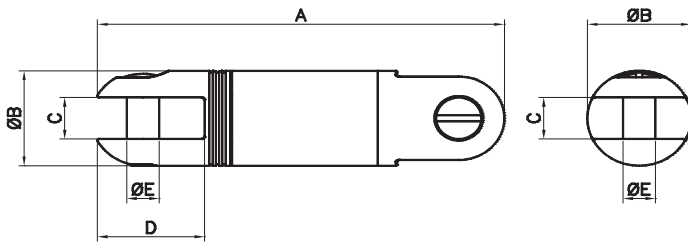


LINE SWIVELS: IMPORTANT SAFETY INFORMATION

- Under no circumstances must the safe working load of any swivel be exceeded. We cannot be held responsible if a swivel is used for any application that exerts a load on the swivel in excess of the safe working loads (SWLs) or a load other than an in line load.
- Safe working loads (SWL) are derived from the Ultimate Load (The load at which the Swivel will ultimately fail) divided by a **Factor of Safety**.
- Slingco recommended **Factors of Safety**:
3:1 based on the ultimate load for underground use (see below for Underground SWLs)
5:1 based on the ultimate load for overhead use (see below for Overhead SWLs).
- Line Swivels are designed to be used in line of a cablegrip (see cablegrip.com) to minimize torsional loadings on the pulled component. **Line Swivels are designed solely for a straight (in-line) tension load and are NOT designed for use around sheaves or bullwheels.**
- SWLs stated are in-line tensile loads and relate to new Line Swivels.
- Worn, defective or incomplete Line Swivels should never be used.
- Risk assessments should be undertaken by the user and risk controlling measures introduced prior to use. Safe operating procedures that follow best practice should be adopted at all times. The user bears full responsibility for their actions.
- The Line Swivel should be checked before each use for wear and damage, including axial and radial play in the bearings. Worn, defective or incomplete Line Swivels should never be used.
- If clevis pins are worn or damaged they should **ONLY** be replaced with Slingco Line Swivel pins. Kits are available consisting of two pins. Prior to use clevis pins **MUST** be screwed in to their full extent and torqued to a minimum of 5 Nm (45 lbf in).
- The line swivel must not be modified or dismantled. The warranty covers the unit in the form supplied by Slingco and any attempt to modify or dismantle it will result in the warranty becoming void. It may also result in damage to property and cause severe bodily harm, or death.



Slingco Part No.	Safe Working Load Underground		Safe Working Load Overhead		A		Ø B		C		D		Ø E	
	lb	kN	in	mm	in	mm	in	mm	in	mm	in	mm	in	mm
ZSW2091	2,250	10.0	1,350	6.0	3-3/8"	86	7/8	22	3/8	10	7/8	22	5/16	8
ZSW2092	3,500	15.6	2,100	9.36	4	99	1	25	7/16	11	1-1/16	26	3/8	10
ZSW2093	5,000	22	3,000	13.2	4-15/16	126	1-1/4	32	9/16	14	1-1/4	32	3/8	10
ZSW2094	7,000	31.1	4,200	18.7	5-3/16	132	1-3/8	35	9/16	14	1-13/32	36	1/2	12.5
ZSW2096	10,000	44.5	6,000	26.7	6-3/16	157	1-5/8	41	45/64	18	1-3/4	45	5/8	16
ZSW2097	15,000	66	9,000	39.6	7-5/16	186	2-3/32	53	25/32	20	2-1/8	54	23/32	18
ZSW2649	4,000	17.8	2,400	10.6	4-3/4	121	1-1/4	32	19/32	15	1-3/16	30	3/8	10
ZSW2929	8,000	35.5	4,800	21.3	5-3/8	136	1-1/2	38	5/8	16	1-3/8	35	7/16	11
ZSW6122	10,000	44.5	6,000	26.7	7	178	1-7/8	48	3/4	19	1-3/4	44	5/8	16
ZSW6123	16,000	71.1	9,600	42.7	10-5/32	258	2-7/16	62	1	25	2-11/16	68	7/8	22
ZSW2857	30,000	134	18,000	80	11-1/8	283	2-1/2	63	1	25	2-3/4	70	7/8	22



Slingco America, Inc.
 130 Celtic Blvd, Tyrone,
 Georgia, 30290, USA
 TOLL FREE: 888 685 9478
 sales@slingcoamerica.com

Slingco Limited
 Gateway Business Park, New Hall Hey Road,
 Rawtenstall, BB4 6JG, England
 Tel: +44 [0]1706 855558
 sales@slingco.com

Slingco Australia Pty. Ltd.
 L9, 1 York Street, Sydney,
 NSW 2000, Australia
 Sales: +61 3 8840 6556
 sales@slingcoaustralia.com.au

888-685-9478

+44 [0]1706 855558

+61 3 8840 6556

slingco.com

Swivels Data Sheet: MAN13543 – RevA Date March 2024

Slingco makes no warranty, express or implied, with respect to this product nor with respect to its specifications. In no event shall Slingco be liable for any direct, indirect, punitive, incidental, special consequential damages to property or life, whatsoever, arising out of or connected with the use or misuse of this product. This product is intended for use by qualified professionals having adequate knowledge of its proper use. *March 2024 - v1.0*