

**100 TON HYDRAULIC CRIMPER**  
**SAFE OPERATION AND**  
**MAINTENANCE INSTRUCTIONS**  
SLINGCO PART NOS. TCR08490 & TCR15649

**⚠ ATTENTION**

**READ** and **UNDERSTAND** all of the instructions and safety information in this manual before operating or servicing this tool.

Failure to read and understand these warnings and safe handling instructions could result in severe personal injury or death.

**KEEP THIS MANUAL WITH TOOL.**

Thank you for using Slingco® products. This manual must be read and understood prior to operating this product. Special attention should be paid to the section **'Safety Information'**.

This manual should be kept available to all operating and maintenance personnel.

Additional or replacement manuals may be obtained at no charge by contacting your local Slingco office.

## CONTENTS

SAFETY INFORMATION AND WARNINGS	3-4
PRODUCT DESCRIPTION	5
OPERATING INSTRUCTIONS	6-7
TROUBLESHOOTING	8
MAINTENANCE	9
PARTS GUIDE - TCR08490	10-11

# SAFETY INFORMATION

## ⚠ WARNING



**DO NOT** attempt to disassemble or repair this product. Doing so will violate the terms of the warranty.

This product is **NOT** an insulator. Use protective equipment when working near power lines.

## ⚠ ATTENTION



■ Read and follow the operator's manual before using tool.

Use all appropriate personal safety equipment when handling, servicing, and operating crimper.

Read all instructions and warnings carefully. Follow all safety precautions to avoid injury or damage to property.



■ Only crimp connectors that fit the tool specifications. **DO NOT** attempt to crimp oversized connectors.

Do not inspect or clean tool while the tool is connected to the power source.

## ⚠ CAUTION



■ Do **NOT** operate crimping tool without dies in place. Damage to the ram or crimping head may occur.

## ⚠ WARNING

ELECTRICAL SHOCK HAZARD



- This tool is **NOT** insulated for use on or near energized conductors.
- Failure to observe this warning could result in severe injury or death.

## ⚠ WARNING

FLYING OBJECTS HAZARD



- Do not operate without eye protection, or serious injury may occur.

## ⚠ WARNING

PINCH POINT HAZARD



- Keep hands away from closing dies, or serious injury may occur.

## ⚠ WARNING

HIGH PRESSURE FLUID HAZARD



- Do not use hands to check for leaks.
- Depressurize the hydraulic system before servicing.
- Keep hoses away from body.
- Failure to observe these warnings could result in serious injury.

## SAFETY INFORMATION (CONT.)

### WORK AREA SAFETY

1. Keep the area around the equipment clean and free of obstructions.
2. Ensure bystanders remain at a safe distance from the work area.

### PERSONAL SAFETY

1. Stay alert while using this hydraulic equipment to maintain safe operation. Do not use under the influence of drugs, alcohol or medicine.
2. Wear fitted clothing and secure hair to prevent entanglement during operation.
3. Maintain firm footing, stay properly secured, and work within a safe range of motion.

### TOOL USE AND CARE

1. Use the tool only when all components are in proper working condition.
2. Ensure all users are trained and have read and understood the safe operation and maintenance instructions before use.
3. Inspect the tool before and after each use to confirm it is in safe working condition.
4. Maintain all tool components, checking for tightness and proper function before operation.
5. Always operate the tool in dry conditions.
6. Keep the tool dry, properly lubricated, and stored in a safe location.

### SERVICE

1. Have the tool serviced only by qualified technicians. Do not attempt to disassemble or repair this tool.
2. Use only factory Slingco replacement parts when servicing the tool.

## DESCRIPTION - TCR08490

### SPECIFICATIONS

- Height: 14.9"
- Weight: 78.5 lb
- Max. pressure: 700 bar/10,000 psi
- Max. output: 100 Tons
- Oil required: 422cc
- Ram stroke: 1.16"

### ACCESSORIES:

- Slingco steel carrying case

### CRIMPING RANGE


- **Copper:** Up to 2.5" O.D. Sleeve
- **Aluminum:** Up to 3" O.D. Sleeve
- **Steel:** Up to 1.25" O.D. Sleeve

**The TCR08490 single-action crimper can be converted to double-action by installing the HYD15164 3/8" female fitting.**

**Part number TCR15649 includes TCR08490 and HYD15164 (installation required).**

## DOUBLE-ACTION CONVERSION INSTRUCTIONS

### WARNING

 Work on hydraulic systems can expose personnel to high-pressure fluid, sharp edges, and unexpected component movement.

Use appropriate personal protective equipment (PPE) for the task, following facility's safety requirements and risk assessments. PPE should include, but not be limited to, eye protection, gloves, and protective clothing.

Ensure the work area is clean and free of ignition sources.

### TOOLS

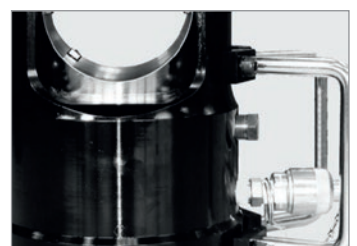
- 15/16" Wrench
  - Sealant or PTFE tape compatible with system conditions
  - Lint-free cloth
1. Fully retract the crimper and shut off, depressurize, and disconnect the hydraulic system before beginning work.
  2. Remove the threaded vent (see page 10, item 46) from the hydraulic crimper.
  3. Inspect the vent and the mating threads on the crimper for damage or wear.
  4. Prior to installation, inspect the fitting for damage, contamination, or deformation on threads, sealing surfaces, and internal components.
  5. Clean both male and female connection threads with a lint-free cloth.
  6. Apply the appropriate thread sealant or PTFE tape to the male threads, following the product manufacturer's instructions.
  7. Align the fitting so the connection is straight, avoiding cross-threading.
  8. Hand-tighten the fitting until it naturally stops.
  9. Tighten the fitting with the wrench using the torque value per the appropriate standard or company SOP.
    - If torque specifications are unavailable, tighten until snug, then apply an additional 1/4-1/2 turn to fully seat the seal.
  10. Confirm the fitting is properly aligned and securely tightened.
  11. Connect a double acting hydraulic system and restore system pressure slowly.
  12. Check for leaks at low pressure first, then under full operating pressure.

## OPERATING INSTRUCTIONS

### ⚠ WARNING

⚠ Make sure all parts of the product are clean and that no loose parts exist.

1. Pull the arresting pin beside the body and slide off the upper die holder.
2. Rotate die release pins clockwise.
3. Insert die set into the upper and lower die seat.
4. Slide both die sets into proper position and ensure the die release pins are locked.
5. Pull arresting pin and replace upper die holder, being sure pin locks holder into place.
6. Before operating, attach the hose coupler to the coupler input on the tool head. Make sure it is well connected so oil flow is unobstructed. (Coupler image on pg. 7.)
7. Operate the pump and advance piston, and allow it to retract completely. Do this several times in order to remove air trapped in the hydraulic system.
8. Insert conductor into the desired connector and place connector between the appropriate dies for the first compression. Make sure the fitting is properly centered on the lower die.
9. Operate the pump to advance the lower die until both dies touch while crimping.



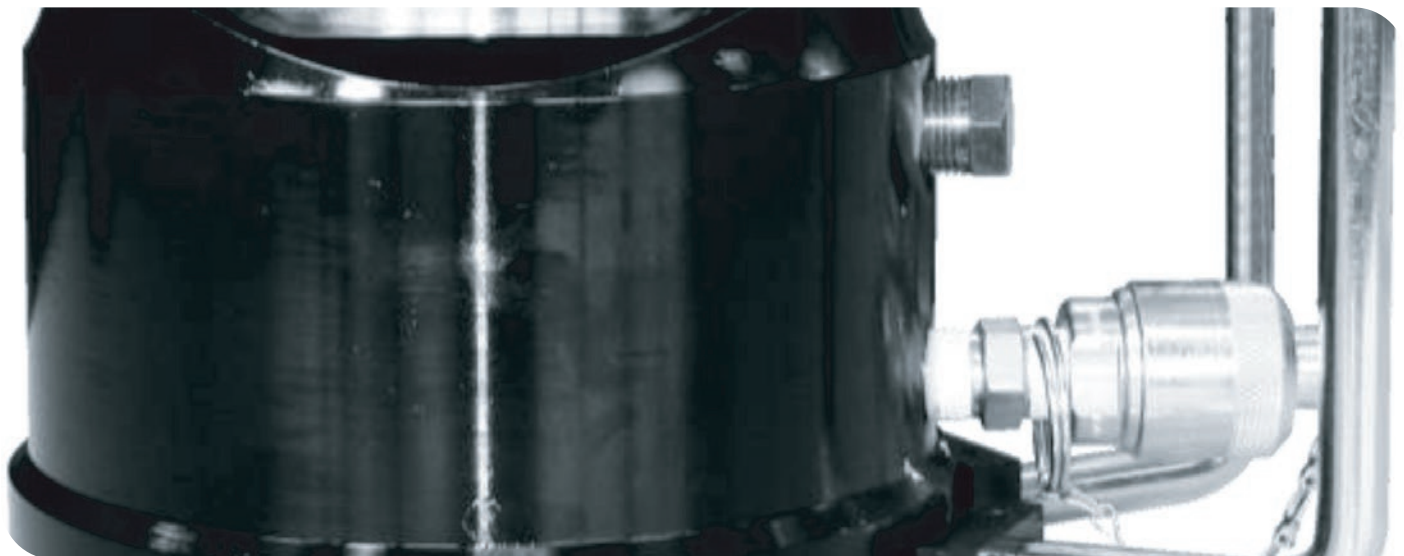
**DO NOT OPERATE THE HYDRAULIC CRIMPING TOOL WITHOUT DIES SECURELY INSTALLED IN THE UPPER & LOWER DIE SEAT!**

## OPERATING INSTRUCTIONS (CONT.)

The operation completes when the safety relief valve is activated and die retracts.

**NOTE: The TCR08490 single-action crimper can be converted to double-action by installing the HYD15164 3/8" female fitting. After conversion, a double-action pump is required for operation.**

10. Repeat the compression process according to your specifications.
11. Turn off the pump after the crimping operation is finished and the lower piston is retracted completely.
12. Pull the arresting pin beside the body and slide off the upper die holder. Remove the crimped connector from the tool.
13. To remove or replace the upper and lower dies, rotate the release pins and slide the dies out of the crimping head.
14. If the couplers cannot be dismantled, restart the pump to release the internal pressure then turn off the pump before disconnecting. Replace the dust caps on the couplers.
15. After use, clean the product and check to ensure that all pieces are in working condition. Apply rust preventive oil to the crimper after use.



## TROUBLESHOOTING

### THE CONNECTOR CANNOT BE CRIMPED

1. One or more tool parts require repair. Replace the parts immediately to prevent serious injury or property damage.
2. The connector applied is the incorrect size. Apply the appropriate size connector.
3. Hydraulic system is not building pressure. Inspect and service the hydraulic system following the manufacturer's recommendations and procedures.

### PISTON IS STUCK OR UNABLE TO RETRACT

1. The cylinder piston may be deformed. This can result from crimping an off-center connector or using the tool in a manner it was not intended. Contact your Slingco service representative.
2. The connection between the hose and crimper fitting is not seated properly. Reseat the hose and fitting per manufacturer instructions.

### PISTON ACTION IS SLOW OR SPONGY

1. There is air in the hydraulic system. Follow step #7 on page 6 to expel any air in the system.
2. Hose is undersized. Attach the appropriate sized hose.

### PRESSURE LEAKS AWAY

1. Release valve is leaking. Contact your Slingco service representative.
2. Piston seal is leaking. Contact your Slingco service representative.
3. Fluid leaks on the cylinder or pump body. Contact your Slingco service representative.

### IMPORTANT

- Following any operation, the piston **MUST BE FULLY RETRACTED** to keep the tool in good condition.
- Ensure dies are installed before operating the crimper—using it without dies will damage the crimp head.

## MAINTENANCE

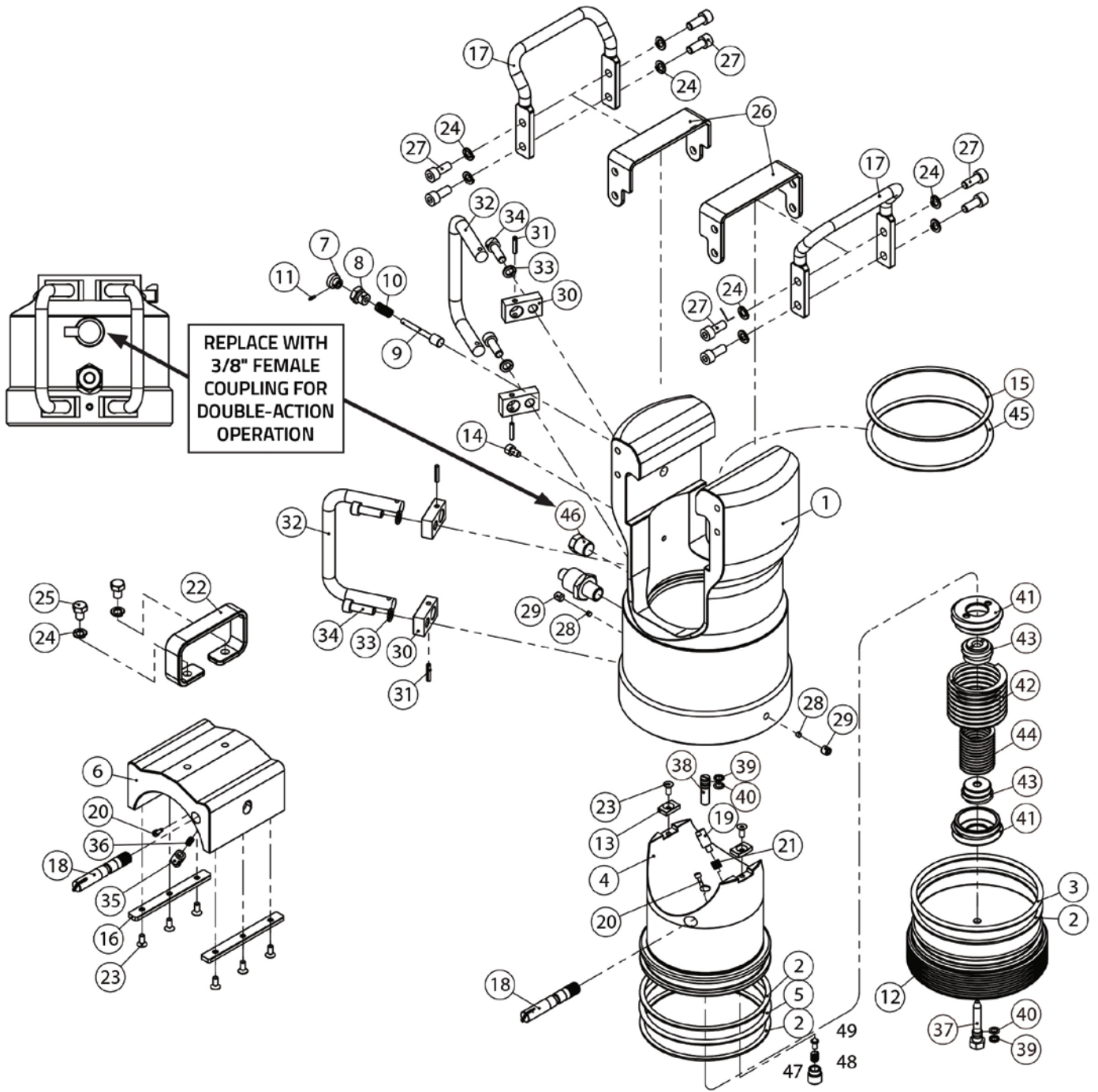
### FOLLOW THESE TIPS TO ENSURE LONG PRODUCT LIFE

- Keep the tool head clean and free of dirt, metal chips, and debris.
- Apply rust-preventative oil routinely to protect the tool.
- Prevent contact between the tool and solvents or water to maintain proper function and longevity.
- Change the pump oil regularly. Contaminated oil may cause malfunctions or damage to the tool.
- Use only new **SHELL T15** hydraulic fluid or an approved equivalent. Using an incorrect oil type can damage the tool head and pump.
- Always lift and maneuver the tool by its handles. Avoid supporting it by the hydraulic hose or couplers, and never drop it into the carrying case or onto the ground.
- Store the tool in environments with controlled temperature and humidity, away from direct sunlight.
- Recommended operating temperatures are 14°F to 104°F. Hydraulic fluid temperatures above 149°F may soften seals and cause leaks.

### IMPORTANT

 **DO NOT ATTEMPT TO DISASSEMBLE OR REPAIR THIS TOOL!**

# PARTS GUIDE - TCR08490



## PARTS GUIDE - TCR08490

Part Ref.	Part Number	Description	Qty	Part Ref.	Part Number	Description	Qty
1	TCR10659	Cylinder	1	29	TCR10686	Screw	2
2*	TCR10660	Backup Ring	3	30	TCR10598	Locating Block	4
3*	TCR10661	O-Ring	1	31	TCR10599	Conical Pin	4
4	TCR10662	Main Piston	1	32	TCR10614	Extra Handle (bottom)	2
5*	TCR10663	O-Ring	1	33	TCR10607	Spring Washer	4
6	TCR10664	Upper Die Seat	1	34	TCR10687	Screw	4
7	TCR10665	Adjuster	1	35+	TCR10688	Arresting Pin	2
8	TCR10666	Screw	1	36+	TCR10689	Compression Spring	1
9	TCR10667	Stop Collar	1	37	TCR10706	Screw	1
10+	TCR10668	Compression Spring	1	38	TCR10624	Screw	1
11+	TCR10669	Spring Pin	1	39*	TCR10617	Backup Ring	2
12	TCR10670	Cylinder Cap	1	40*	TCR10618	O-Ring	2
13	TCR10671	Guide Pieces	2	41	TCR10625	Connector Ring	2
14	TCR10672	Screw	1	42	TCR10626	Spring	1
15*	TCR10673	Backup Ring	1	43	TCR10690	Connector Ring	2
16	TCR10674	Guide Pieces	2	44	TCR10691	Spring	1
17	TCR10675	Handles (top)	2	45*	TCR10692	O-Ring	1
18	TCR10676	Stop Collar	2	46	TCR10693	Threaded Vent (Replace with 3/8" female coupling for double-action operation)	1
19+	TCR10677	Arresting Pin	1	47	TCR10694	Screw	1
20+	TCR10678	Arresting Pin	2	48+	TCR10695	Compression Spring	1
21+	TCR10679	Compression Spring	1	49	TCR10696	Conical Pin	1
22	TCR10680	Cylinder Cap Handle	1		TCR10735	Case	1
23	TCR09057	Screw	8		LAB08443	Slingco Logo Label	1
24	TCR10681	Washer	10		LAB08734	Warning Label	1
25	TCR10682	Hex Nut	2				
26	TCR10683	Protection Piece	2				
27	TCR10684	Screw	8				
28	TCR10685	Copper Pin	2				

Seal Kit Part Number is TCR09918 (\*)

Detent Kit Part Number is TCR09926 (+)

Replacement Label Kit Part Number is LAB12517

3/8" Female Coupling Part Number is HYD15164

## **⚠ ATTENTION**

**READ** and **UNDERSTAND** all of the instructions and safety information in this manual before operating or servicing this tool.

Failure to read and understand these warnings and safe handling instructions could result in severe personal injury or death.

**KEEP THIS MANUAL WITH TOOL.**



**Slingco America, Inc.**  
130 Celtic Blvd, Tyrone,  
Georgia, 30290, USA  
TOLL FREE: 888 685 9478  
sales@slingcoamerica.com

**888-685-9478**

**Slingco Limited**  
Gateway Business Park, New Hall Hey Road,  
Rawtenstall, BB4 6JG, England  
Tel: +44 [0]1706 855558  
sales@slingco.com

**+44 [0]1706 855558**

**Slingco Australia Pty. Ltd.**  
L9, 1 York Street, Sydney,  
NSW 2000, Australia  
Sales: +61 3 8840 6556  
sales@slingcoaustralia.com.au

**+61 3 8840 6556**

**slingco.com**

100 Ton Hydraulic Crimper Maintenance Manual: MAN10844 - Rve 002 Date January 2026

Slingco makes no warranty, express or implied, with respect to this product nor with respect to its specifications. In no event shall Slingco be liable for any direct, indirect, punitive, incidental, special consequential damages to property or life, whatsoever, arising out of or connected with the use or misuse of this product. This product is intended for use by qualified professionals having adequate knowledge of its proper use. *January 2026 - v2.2*