

**60 TON HYDRAULIC CRIMPER
SAFE OPERATION AND
MAINTENANCE INSTRUCTIONS**

SLINGCO PART NOS. TCR7003 & TCR7018

⚠ ATTENTION

READ and **UNDERSTAND** all of the instructions and safety information in this manual before operating or servicing this tool.

Failure to read and understand these warnings and safe handling instructions could result in severe personal injury or death.

KEEP THIS MANUAL WITH TOOL.

Thank you for using Slingco® products. This manual must be read and understood prior to operating this product. Special attention should be paid to the section **'Safety Information'**.

This manual should be kept available to all operating and maintenance personnel.

Additional or replacement manuals may be obtained at no charge by contacting your local Slingco office.

CONTENTS

SAFETY INFORMATION	3-4
PRODUCT DESCRIPTION	5
OPERATING INSTRUCTIONS	6-7
TROUBLESHOOTING	8
MAINTENANCE	9
PARTS GUIDE - TCR7003	10-11
PARTS GUIDE - TCR7018	12-13

SAFETY INFORMATION

⚠ WARNING



DO NOT attempt to disassemble or repair this product. Doing so will violate the terms of the warranty.

This product is **NOT** an insulator. Use protective equipment when working near power lines.

⚠ ATTENTION



- Read and follow the operator's manual before using tool.

Use all appropriate personal safety equipment when handling, servicing, and operating crimper.

Read all instructions and warnings carefully. Follow all safety precautions to avoid injury or damage to property.



- Only crimp connectors that fit the tool specifications. **DO NOT** attempt to crimp oversized connectors.

Do not inspect or clean tool while the tool is connected to the power source.

⚠ CAUTION



- Do **NOT** operate crimping tool without dies in place. Damage to the ram or crimping head may occur.

⚠ WARNING

ELECTRICAL SHOCK HAZARD



- This tool is **NOT** insulated for use on or near energized conductors.
- Failure to observe this warning could result in severe injury or death.

⚠ WARNING

FLYING OBJECTS HAZARD



- Do not operate without eye protection, or serious injury may occur.

⚠ WARNING

PINCH POINT HAZARD



- Keep hands away from closing dies, or serious injury may occur.

⚠ WARNING

HIGH PRESSURE FLUID HAZARD



- Do not use hands to check for leaks.
- Depressurize the hydraulic system before servicing.
- Keep hoses away from body.
- Failure to observe these warnings could result in serious injury.

SAFETY INFORMATION (CONT.)

WORK AREA SAFETY

1. Keep the area around the equipment clean and free of obstructions.
2. Bystanders should stay clear of the work area to ensure safety.

PERSONAL SAFETY

1. Stay alert while using this hydraulic equipment to prevent serious injury.
Do not use under the influence of drugs, alcohol, or medicine.
2. Do not wear loose hair or clothes that may get caught while the equipment is in operation.
3. Work safely. Ensure firm footing, be properly secured and do not over-extend yourself while operating equipment.

TOOL USE AND CARE

1. Do not use this tool if there are any abnormalities or damage to any of its components.
2. All users should be familiar with its use before operating and have read and understood completely the safe operation and maintenance instructions.
3. Inspect the tool before and after every use. Do not use this tool if it is damaged in any way.
4. Personal injury can be caused by operating damaged or poorly maintained tools.
Check for loose parts before use.
5. Do not use this tool in wet conditions. Store this tool in a dry place and keep properly lubricated and oiled.

SERVICE

1. This tool must be repaired by qualified technicians. Do not attempt to disassemble or repair this tool yourself.
2. When having the tool serviced, always use factory Slingco replacement parts.

DESCRIPTION

SPECIFICATIONS


- Height: 17"
- Weight: 45 lb
- Max. pressure: 700 bar/10,000 psi
- Max. output: 60 Tons
- Oil required: 312cc
- Ram stroke: 1.5"
- Accessories:
 - Slingco steel carrying case
- TCR7003 - Single-Action Cylinder
- TCR7018 - Double-Action Cylinder



DO NOT OPERATE THE HYDRAULIC CRIMPING TOOL WITHOUT DIES SECURELY INSTALLED IN THE UPPER & LOWER DIE SEAT!

OPERATING INSTRUCTIONS

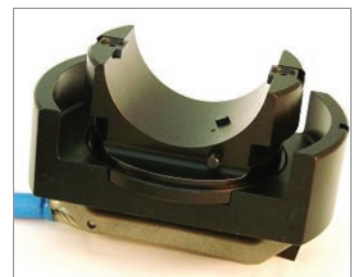
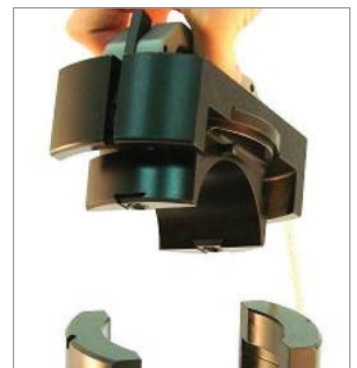
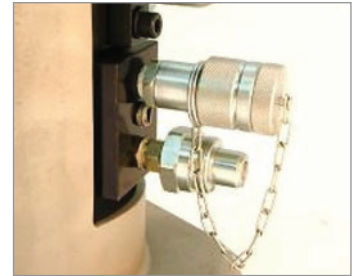
WARNING

 Make sure all parts of the product are clean and that no loose parts exist.

1. Place the tool on its stand and rotate the head until the coupler is positioned at the opening provided in the stand.
2. Before operating, attach the hose coupler firmly to the coupler in on the tool head. Make sure they are well connected so oil flow is unobstructed.

NOTE: To operate model TCR7018 a double-acting hydraulic pump rated at 700 bar/10,000psi is required (couplers shown to the right).

3. Remove the cylinder cap from the cylinder. Press the cap trigger and twist the cap 90-degrees. Lift the cap off the U-head.
4. Select the appropriate die set. Press the button on the upper die holder and slide the die in until it clicks into place on the die retainer. Repeat the process for the lower die.
5. Replace the cap and twist it back until it locks into place.
6. Operate the pump and advance and retract the piston several times in order to remove air trapped in the hydraulic system.
7. Insert conductor into the desired connector and place connector between the dies for the first compression. Make sure the connector is properly centered on the lower die.



OPERATING INSTRUCTIONS (CONT.)

8. Operate the pump to advance the lower die until both dies touch while crimping. The operation completes when the hydraulic pressure reaches 700 bar/10,000psi and the safety relief valve is activated.
9. Retract the piston with lower die by releasing the oil pressure in the tool. Repeat the compression process according to your specifications.
10. Turn off the pump after the crimping operation is finished and the lower piston is retracted completely.
11. Twist and lift off the cap from the cylinder and remove the fitting from the tool.
12. To remove or replace the upper and lower dies, press the release pins and slide the dies out of the U-head.
13. If the couplers cannot be dismantled, restart the pump to release the internal pressure then turn off pump before disconnecting. Replace the dust caps on the couplers.
14. After use clean the product and check to ensure that all pieces are in working condition. Apply rust preventive oil to the crimper before returning it to the carrying case.

TROUBLESHOOTING

THE CONNECTOR CANNOT BE CRIMPED

1. One or more tool parts require repair. Replace the parts immediately to prevent serious injury or property damage.
2. The connector applied is the incorrect size.

PISTON IS STUCK OR UNABLE TO RETRACT

1. The cylinder piston might be deformed. Causes may include crimping an off-center connector or from the tool being used in a manner for which it was not intended.

PISTON ACTION IS SLOW OR SPONGY

1. There is air in the hydraulic system. Follow step #6 on page 6 to expel any air in the system.

PRESSURE LEAKS AWAY

1. Release valve is leaking. Contact your Slingco® service representative.
2. Piston seal is leaking. Contact your Slingco® service representative.
3. Fluid leaks on the cylinder or pump body. Contact your Slingco® service representative.

IMPORTANT

- Under any operation, the piston **MUST BE FULLY RETRACTED** to keep the tool in good condition.
- Do not test the crimper **without dies** to avoid damage to the Crimp Head.

MAINTENANCE

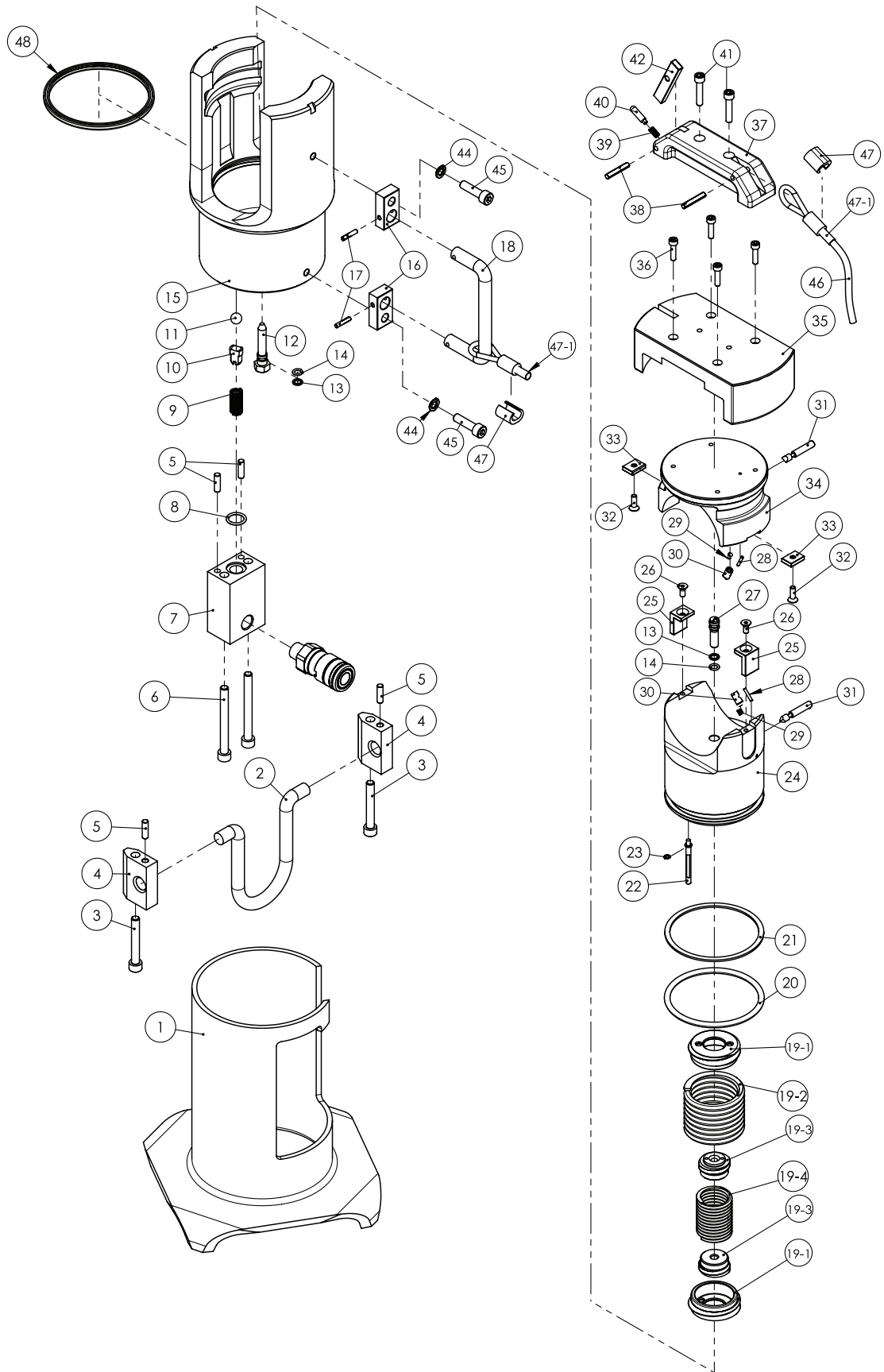
FOLLOW THESE TIPS TO ENSURE LONG PRODUCT LIFE

- Keep the tool head free of dirt and metal chips. Routine application of rust preventative oil to the product is needed.
- Avoid bringing the tool into contact with solvents or water.
- Routine renewal of pump oil is required. Particles mixed in the pump oil may cause malfunctions or damage to the product.
- Use only new **SHELL T15** hydraulic fluid or equivalent. Using the incorrect type of oil will cause damage to the tool head and pump.
- **DO NOT** lift the tool by the hydraulic hose or couplers, or let the tool drop to the ground or into the carrying case.
- **DO NOT** store this product in places with high temperatures, high humidity, or in direct sunlight. Suggested working temperatures are 14 °F to 104 °F. Hydraulic fluid temperatures over 149 °F might soften seals and cause fluid leaks.

IMPORTANT

 **DO NOT ATTEMPT TO DISASSEMBLE OR REPAIR THIS TOOL!**

PARTS GUIDE - TCR7003



PARTS GUIDE - TCR7003

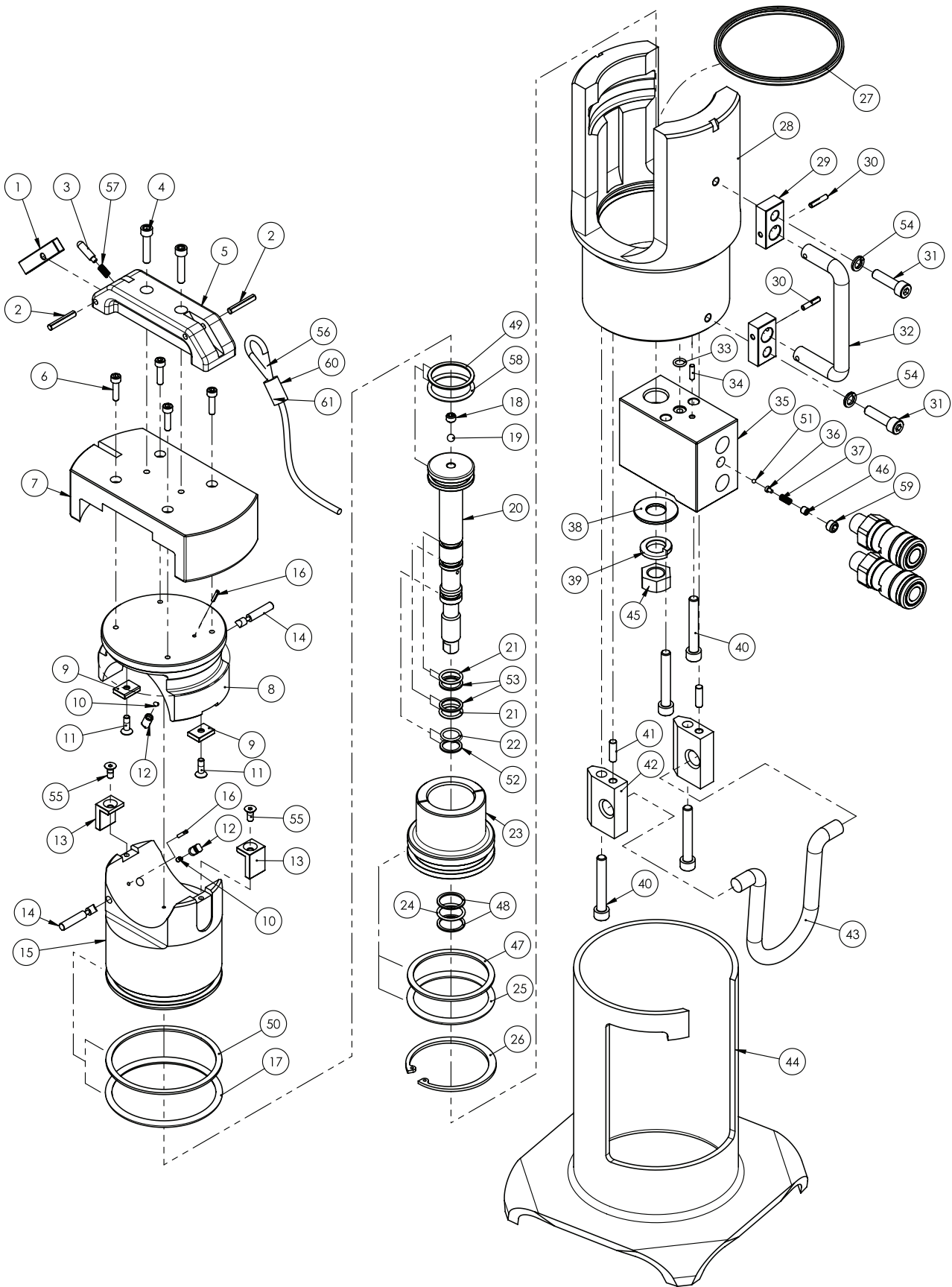
Part Ref.	Part Number	Description	Qty	Part Ref.	Part Number	Description	Qty
1	TCR10606	Stand	1	27	TCR10624	Screw	1
2	TCR10605	Handle	1	28+	TCR09050	Spring Pin	2
3	TCR10602	Screw	2	29+	TCR09051	Compression Spring	2
4	TCR10604	Locating Block	2	30+	TCR09052	Arresting Pin	2
5	TCR10603	Pin	4	31+	TCR09053	Release Pin	2
6	TCR10612	Screw	2	32	TCR09055	Screw	2
7	TCR10613	Oil Feed Block	1	33	TCR09054	Guide Block	2
8*	TCR10596	O-Ring	1	34	TCR10595	Die Holder	1
9	TCR09276	Compression Spring	1	35	TCR10594	Cap	1
10	TCR10615	Ball Seat	1	36	TCR10593	Screw	4
11	TCR09049	Ball	1	37	TCR09063	Handle	1
12	TCR10616	Screw	1	38	TCR09061	Conical Pin	2
13*	TCR10617	Back-Up Ring	2	39	TCR09060	Compression Spring	1
14*	TCR10618	O-Ring	2	40	TCR09059	Reverse Lever Fulcrum Pin	1
15	TCR10619	Cylinder	1	41	TCR09062	Screw	2
16	TCR10598	Locating Block	2	42	TCR09058	Trigger	1
17	TCR10599	Conical Pin	2	44	TCR10607	Spring Washer	2
18	TCR10601	Handle	1	45	TCR10600	Screw	2
19	TCR10620	Spring Set	1	46	TCR10608	Wire	1
20*	TCR09278	O-Ring	1	47	TCR10609	Ferrule	2
21*	TCR09279	Back-Up Ring	1	48*	TCR10597	Oil Seal	1
22	TCR10621	Release Valve Stem	1		TCR10734	Case	1
23	TCR10622	Spring Washer	1	!	LAB08443	Slingco Logo Label	1
24	TCR10623	Main Piston	1	!	LAB08442	Warning Label	1
25	TCR09056	Guide Block	2				
26	TCR09057	Screw	2				

Seal Kit Part Number is TCR09048 (*)

Detent Kit Part Number is TCR09937 (+)

Replacement Label Kit Part Number is LAB12515 (!)

PARTS GUIDE - TCR7018



PARTS GUIDE - TCR7018

Part Ref.	Part Number	Description	Qty	Part Ref.	Part Number	Description	Qty
1	TCR09058	Trigger	1	33*	TCR10637	O-Ring	1
2	TCR09061	Conical Pin	2	34	TCR10638	Pin	1
3	TCR09059	Reverse Lever Fulcrum Pin	1	35	TCR10639	Oil Feed Block	1
4	TCR09062	Screw	2	36	TCR10640	Ball Seat	1
5	TCR09063	Handle	1	37	TCR10641	Compression Spring	1
6	TCR10593	Screw	4	38	TCR10642	Washer	1
7	TCR10594	Cap	1	39	TCR10643	Spring Washer	1
8	TCR10595	Die Holder	1	40	TCR10602	Screw	4
9	TCR09054	Guide Block	2	41	TCR10603	Pin	2
10+	TCR09051	Compression Spring	2	42	TCR10604	Locating Block	2
11	TCR09055	Screw	2	43	TCR10605	Handle	1
12+	TCR09052	Arresting Pin	2	44	TCR10606	Stand	1
13	TCR09056	Guide Block	2	45	TCR10644	Hex Nut	1
14+	TCR09053	Release Pin	2	46	TCR10645	Locating Screw	1
15	TCR10627	Main Piston	1	47*	TCR10646	Back-Up Ring	1
16+	TCR09050	Spring Pin	2	48*	TCR10647	Back-Up Ring	2
17*	TCR09278	O-Ring	1	49*	TCR10648	Back-Up Ring	1
18	TCR10628	Screw	1	50*	TCR09279	Back-Up Ring	1
19	TCR10629	Ball	1	51	TCR10649	Ball	1
20	TCR10630	Main Piston	1	52*	TCR10650	Back-Up Ring	1
21*	TCR10596	O-Ring	2	53*	TCR10651	Back-Up Ring	2
22*	TCR10631	O-Ring	1	54	TCR10607	Spring Washer	2
23	TCR10632	Piston	1	55	TCR09057	Screw	2
24*	TCR10633	O-Ring	1	56	TCR10608	Wire	1
25*	TCR10634	O-Ring	1	57	TCR09060	Compression Spring	1
26	TCR10635	Retaining Ring	1	58*	TCR10652	O-Ring	1
27*	TCR10597	Oil Seal	1	59	TCR10653	Screw	1
28	TCR10636	Cylinder	1	60	TCR10609	Ferrule	2
29	TCR10596	Locating Block	2	61	TCR10610	Sleeve	2
30	TCR10599	Conical Pin	2		TCR10734	Case	1
31	TCR10600	Screw	2	!	LAB08443	Slingco Logo Label	1
32	TCR10601	Handle	1	!	LAB08442	Warning Label	1

Seal Kit Part Number is TCR10356 (*)

Detent Kit Part Number is TCR09937 (+)

Replacement Label Kit Part Number is LAB12516 (!)

⚠ ATTENTION

READ and **UNDERSTAND** all of the instructions and safety information in this manual before operating or servicing this tool.

Failure to read and understand these warnings and safe handling instructions could result in severe personal injury or death.

KEEP THIS MANUAL WITH TOOL.



Slingco America, Inc.
130 Celtic Blvd, Tyrone,
Georgia, 30290, USA
TOLL FREE: 888 685 9478
sales@slingcoamerica.com

888-685-9478

Slingco Limited
Gateway Business Park, New Hall Hey Road,
Rawtenstall, BB4 6JG, England
Tel: +44 [0]1706 855558
sales@slingco.com

+44 [0]1706 855558

Slingco Australia Pty. Ltd.
L11, 1 York Street, Sydney,
NSW 2000, Australia
Tel: +61 2 8313 5596
sales@slingcoaustralia.com.au

+61 3 8840 6556

slingco.com

60 Ton Hydraulic Crimper Tool Maintenance Manual ASD325 - Rve 002 Date2 October 2023

Slingco makes no warranty, express or implied, with respect to this product nor with respect to its specifications. In no event shall Slingco be liable for any direct, indirect, punitive, incidental, special consequential damages to property or life, whatsoever, arising out of or connected with the use or misuse of this product. This product is intended for use by qualified professionals having adequate knowledge of its proper use. *October 2023 - v2.0*