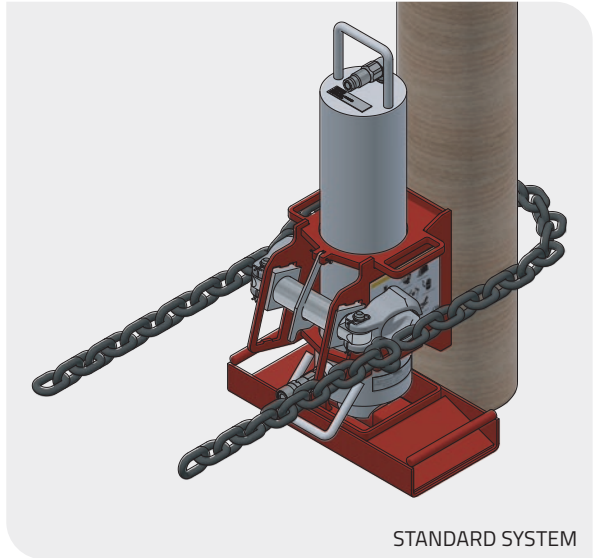


DELUXE SYSTEM



STANDARD SYSTEM

**POLE PULLER
OPERATION AND
SAFETY GUIDE**

SLINGCO STANDARD PART NO. TPE10551
SLINGCO DELUXE PART NO. TPE09386

⚠ ATTENTION

READ and **UNDERSTAND** all of the instructions and safety information in this manual before operating or servicing this tool.

Failure to read and understand these warnings and safe handling instructions could result in severe personal injury or death.

KEEP THIS MANUAL WITH TOOL.

Thank you for using Slingco® products. This manual must be read and understood prior to operating this product. Special attention should be paid to the section **'Safety Information'**.

This manual should be kept available to all operating and maintenance personnel.

Additional or replacement manuals may be obtained at no charge by contacting your local Slingco office.

CONTENTS

| | |
|------------------------|-----|
| SAFETY INFORMATION | 3-4 |
| PRODUCT DESCRIPTION | 5 |
| OPERATING INSTRUCTIONS | 5-7 |
| PARTS GUIDE | 8-9 |

SAFETY INFORMATION

⚠ ATTENTION

DO NOT perform any service or maintenance on this tool other than described in this manual.

Read and follow the operator's manual before using this tool.

This manual should be kept available to all operating and maintenance personnel.

⚠ WARNING SAFETY SHOES REQUIRED



- Safety shoes required when using this product.

⚠ WARNING PINCH POINT HAZARD



- Keep hands away from mechanism, or serious injury may occur.

⚠ WARNING HARD HAT REQUIRED



- **DO NOT** operate without proper head protection.

⚠ WARNING SAFETY GOGGLES REQUIRED



- **DO NOT** operate without eye protection, or serious injury may occur.

⚠ WARNING HIGH PRESSURE FLUID HAZARD



- Do not use hands to check for leaks.
- Depressurize the hydraulic system before servicing.
- Keep hoses away from body.
- Serious injury may occur.

⚠ WARNING SUSPENDED LOAD



- Heavy suspended objects can fall, causing property damage, severe injury, or even death.
- Slingco Pole Puller does not support load of item being extracted.
- **DO NOT** lift or pull more than rated load.

⚠ WARNING ELECTRICAL SHOCK HAZARD



- This tool is **NOT** insulated for use on or near energized conductors. **DO NOT USE** on live circuits.
- Failure to observe this warning could result in severe injury or death.

⚠ WARNING HEAT WARNING



- Hot surface. Be cautious when touching.

⚠ WARNING GLOVES REQUIRED



- **DO NOT** operate without proper hand protection.

SAFETY INFORMATION (CONT.)

WARNING

SLIPPERY WHEN WET (OUTRIGGER PAD)



- Outrigger pad surface is slippery when wet.

WARNING

TWO PERSON LIFT



- **DO NOT** lift or move this equipment without assistance.

WORK AREA SAFETY

1. Keep the area around the equipment clean and free of obstruction.
2. Bystanders should stay clear of the work area to ensure safety.

PERSONAL SAFETY

1. Stay alert while using the equipment to prevent serious injury. Do not use under the influence of drugs, alcohol or medications.
2. Do not wear loose hair or clothes that may get caught while the equipment is in operation.
3. Work safely. Ensure firm footing, be properly secured and do not over-extend yourself while operating equipment.

TOOL USE AND CARE

1. **DO NOT** use this tool if there are any abnormalities or damage to any of its components.
2. Inspect the tool before and after every use. Do not use this tool if it is damaged in any way. Ensure that all pins are secure. Be sure to inspect all hydraulic hoses and couplers for cracks, leaks and wear.
3. When having the tool repaired, always use factory Slingco replacement parts. Tools must be serviced and/or repaired by Slingco or a factory authorized service center.

DESCRIPTION

SPECIFICATIONS

- Max operating pressure: 2,800 psi
- Recommended flow: 4-8 gpm
- Lift at max pressure: 50,120 lb

SYSTEM TOTAL WEIGHT

- **Standard:** 128 lb
- **Deluxe:** 157 lb

PART WEIGHT

- Hydraulic cylinder - 57 lb
- Chain - 14 lb
- Base weldment - 22 lb
- Back plate - 6 lb
- Pole puller pad - 23 lb
- Swivel assembly - 35 lb

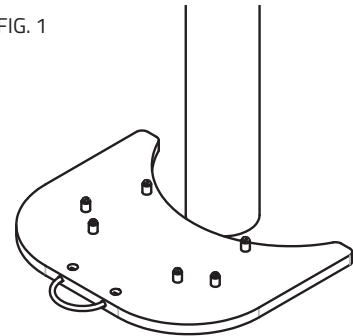
OPERATING INSTRUCTIONS

Check the flow lever on the hydraulic power source, being sure that it is in the off position.

1. Support or secure the pole prior to setting up the pole puller unit. When using the derrick truck in securing and support of the pole to be pulled, **DO NOT** use derrick truck to assist in pulling of pole.

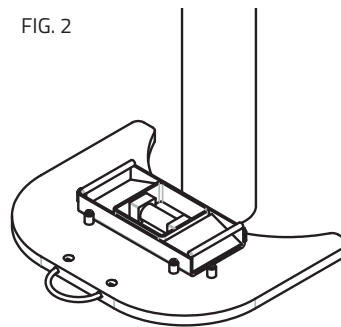
2. Place the optional pole puller pad on the ground with the circular cutout nested around the pole. Ensure pad rests flat on the ground. (Fig. 1)

FIG. 1



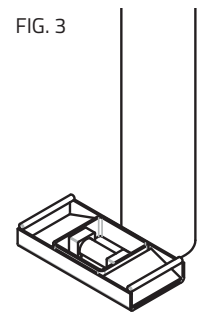
- 3a. Use the bushings on the pole puller pad to secure the base plate next to the pole. (Fig. 2)

FIG. 2



- 3b. If pole puller pad is not being used place the base plate flat on the ground next to the base of the pole. (Fig. 3)

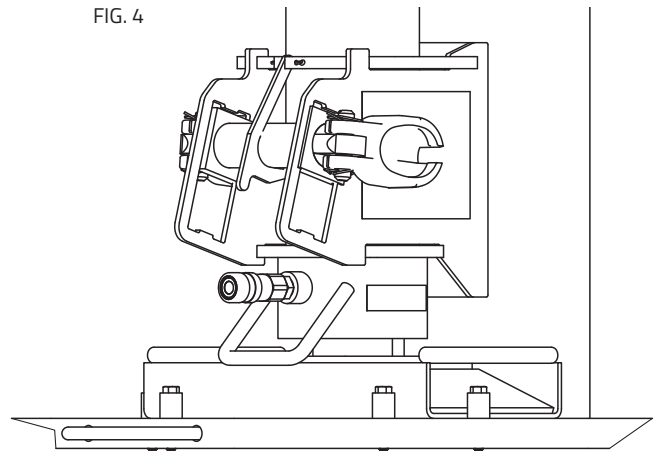
FIG. 3



OPERATING INSTRUCTIONS (CONT.)

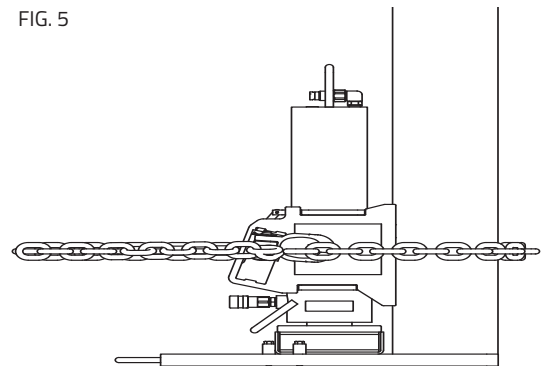
4. Locate the curved rod end of the cylinder and place the curved end on the center mount of the base plate. Set the cylinder in an upright position with the fittings pointed away from the pole.
5. Slide the swivel chain hook assembly over the top of the cylinder, lowering it until it rests on the base of the cylinder.
6. Slide the chain hook swivel bar upwards until the latch hook locks it securely into place. (Fig. 4)

FIG. 4



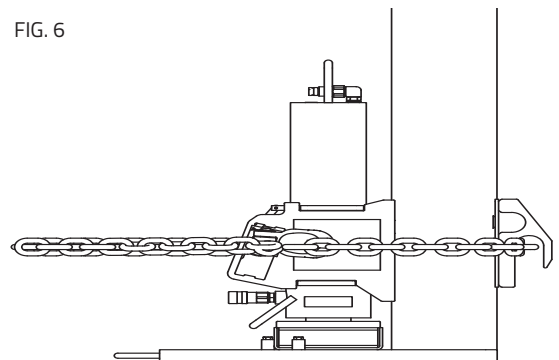
7. Take the pole chain and locate the center of the chain, now place the center of the chain next to the back of the pole. Bring both sides of the chain around the pole and attach to the chain hook castings. Be sure to leave a minimum amount of slack in the chain. There should be a similar amount of excess chain hanging from each chain hook. (Fig. 5)

FIG. 5



8. Place the optional back plate tooth between the chain and the pole with the teeth resting against the pole. (Fig. 6).

FIG. 6



OPERATING INSTRUCTIONS (CONT.)

9. Release latch hook. The chain hook swivel bar should drop reducing the slack in the chain.

10. Identify the hydraulic power source for the pole puller and be sure the hydraulic power source is in the off position.

11. Inspect the couplings connections for any dirt or debris and be sure they are clean prior to connecting.

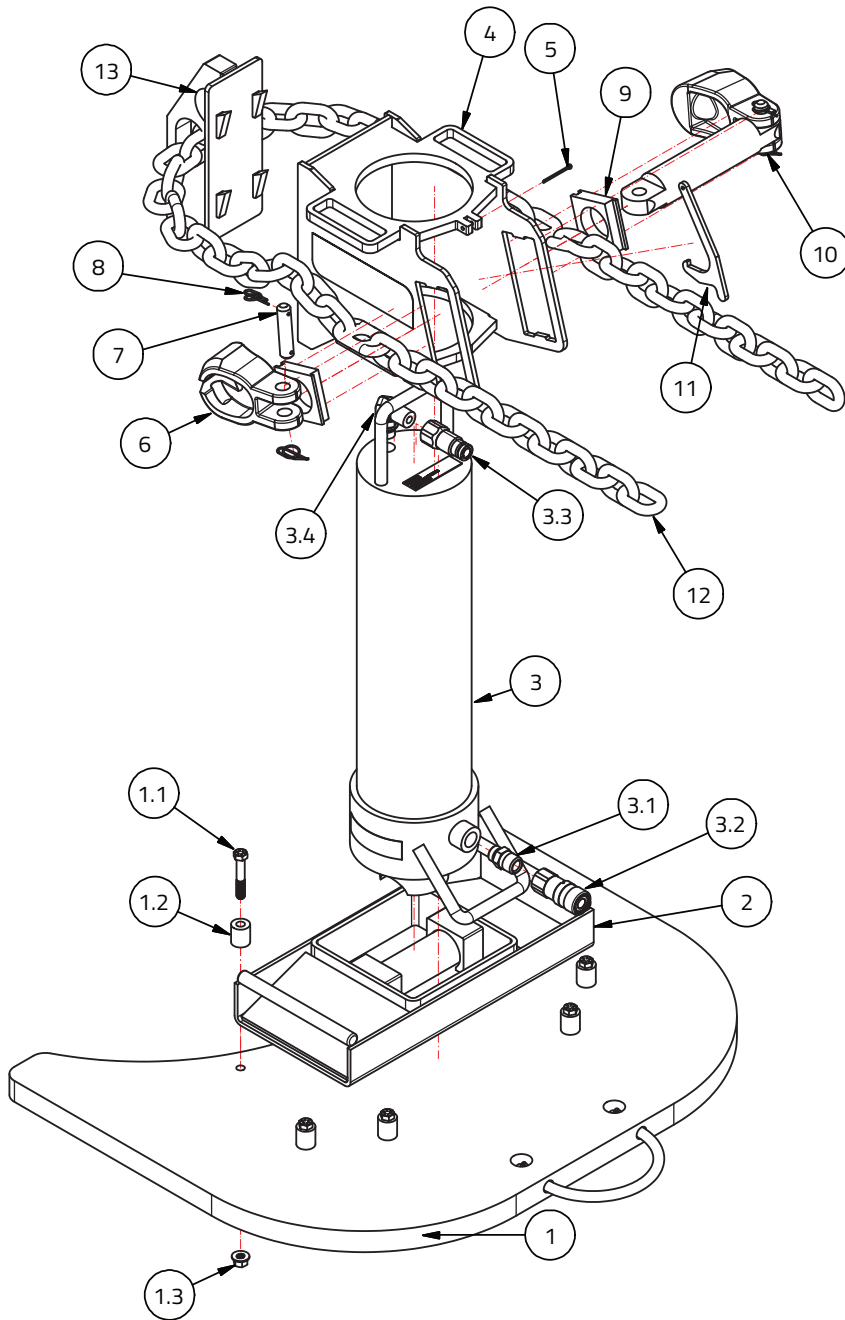
12. Connect appropriate hydraulic hose fittings to the return and pressure ports.

13. **DO NOT EXCEED** an operating pressure of 2800 psi. It is recommended that the power source is allowed to run idle for a short period of time prior to operation to warm the hydraulic reservoir fluid.

14. The pole puller is now ready to be operated. Be sure to operate the cylinder to maximum extension and then retract. Be sure to keep the swivel plate assembly and base plate in the appropriate position prior to every extension of the cylinder. If required tap swivel weldment or back plate with hammer to release assembly back to the base of the cylinder prior to next pull.

15. Continue to perform step 14 until the pole is free from the ground. If at any point the chain becomes too tight to unhook, adjust or release during or after completion of pull, remove the locking cotter pin that secures the chain hook casting to release the chain. **DO NOT** cut chain.

PARTS GUIDE



| Part Ref. | Part Number | Description | Qty |
|-----------|-------------|--|-----|
| 1 | TPE09378 | Pole Puller Pad(*) | 1 |
| 1.1 | FHX09379 | 3/8"-16 X 2.25" Long Grade 8 Hex Head Bolt(*) | 6 |
| 1.2 | TPE09382 | Spacer(*) | 6 |
| 1.3 | FNL09381 | 3/8"-16 Grade G Distorted Thread Flang Locknut(*) | 6 |
| 2 | TPE11999 | Base Weldment(#) | 1 |
| 3 | | Hydraulic Cylinder | 1 |
| 3.1 | | 8 SAE Male to 1/2"NPT Male Straight Fitting | 1 |
| 3.2 | | 1/2" NPT Port and 3/8" Body Size Flat Face Coupler | 1 |
| 3.3 | | 1/ 2" NPT Port and 3/8" Body Size Flat Face Nipple | 1 |
| 3.4 | | 8 SAE Male to 1/2"NPT Male 90 Degree Fitting | 1 |
| 4 | TPE09385 | Swivel Weldment | 1 |
| 5 | FCP09370 | Cotter Pin | 1 |
| 6 | TPE09397 | Chain Hook Casting(#) | 2 |
| 7 | TPE09376 | Swivel Pin | 2 |
| 8 | FCP09373 | Locking Cotter Pin | 4 |
| 9 | TPE09375 | Port | 2 |
| 10 | TPE09374 | Middle Arm(#) | 1 |
| 11 | TPE09372 | Latch Hook | 1 |
| 12 | TPE09371 | Chain(#) | 1 |
| 13 | TPE09367 | Back Plate Weldment(*) | 1 |

- All items denoted with a (*) are only included with the deluxe system
- All items denoted with a (#) can be re-ordered.

PARTS GUIDE (CONT.)

REPAIR KIT OPTIONS

| Part Number | Description | Qty | Part Number | Description | Qty |
|-----------------|-----------------------------------|-----|-----------------|---------------------------------|-----|
| TPE10570 | Cylinder Seal Kit | | TPE10552 | Swivel Weldment Assembly | |
| TPE10746 | Pole Puller Pad Repair Kit | | <i>includes</i> | Swivel Weldment (TPE09385) | 1 |
| <i>includes</i> | Bolt (FHX09379) | 2 | | Port (TPE09375) | 2 |
| | Spacer (TPE09382) | 2 | | Middle Arm (TPE09374) | 1 |
| | Locknut (FNL09381) | 2 | | Latch Hook (TPE09372) | 1 |
| TPE10748 | Pole Puller Repair Kit | | | Swivel Pin (TPE09376) | 2 |
| <i>includes</i> | Port (TPE09375) | 2 | | Locking Cotter Pin (FCP09373) | 4 |
| | Latch Hook (TPE09372) | 1 | | Chain Hook Casting (TPE09397) | 2 |
| | Swivel Pin (TPE09376) | 2 | | Cotter Pin (FCP09370) | 1 |
| | Locking Cotter Pin (FCP09373) | 4 | | | |
| | Cotter Pin (FCP09370) | 1 | | | |

ATTENTION

READ and **UNDERSTAND** all of the instructions and safety information in this manual before operating or servicing this tool.

Failure to read and understand these warnings and safe handling instructions could result in severe personal injury or death.

KEEP THIS MANUAL WITH TOOL.

WARNING

Cancer and Reproductive Harm www.P65Warnings.ca.gov



Slingco America, Inc.
3100 Jonquil Drive SE, Smyrna,
GA 30080, USA
TOLL FREE: 888 685 9478
sales@slingcoamerica.com

888-685-9478

Slingco Limited
Gateway Business Park, New Hall Hey Road,
Rawtenstall, BB4 6JG, England
Tel: +44 [0]1706 855558
sales@slingco.com

+44 [0]1706 855558

Slingco Australia Pty. Ltd.
L11, 1 York Street, Sydney,
NSW 2000, Australia
Tel: +61 3 8840 6556
sales@slingcoaustralia.com.au

+61 3 8840 6556

slingco.com

Pole Puller Maintenance Manual: MAN10794 – RevA Date July 2025

Slingco makes no warranty, express or implied, with respect to this product nor with respect to its specifications. In no event shall Slingco be liable for any direct, indirect, punitive, incidental, special consequential damages to property or life, whatsoever, arising out of or connected with the use or misuse of this product. This product is intended for use by qualified professionals having adequate knowledge of its proper use. July 2025 - v1.8