



# DIRECTIONAL DRILLING SWIVELS

## SAFE OPERATION AND MAINTENANCE

### INSTRUCTIONS

SLINGCO PART NOS. ZSW11133 & ZSW11134

#### **ATTENTION**

**READ** and **UNDERSTAND** all of the instructions and safety information in this manual before operating or servicing this tool.

Failure to read and understand these warnings and safe handling instructions could result in severe personal injury or death.

**KEEP THIS MANUAL WITH TOOL.**

Thank you for using Slingco® products. This manual must be read and understood prior to operating this product. Special attention should be paid to the section 'Safety Information'.

This manual should be kept available to all operating and maintenance personnel. Additional or replacement manuals may be obtained at no charge by contacting your local Slingco office.

#### AVAILABLE DIRECTIONAL DRILLING SWIVELS:

- # ZSW11133 - 8,500 lb Capacity Swivel
- # ZSW11134 - 10,500 lb Capacity Swivel

## SAFETY INFORMATION & INSPECTION

### ⚠ WARNING



To avoid serious injury, **DO NOT** perform any work without wearing a properly rated hard hat & head protection.

### ⚠ WARNING

Read and follow the instructions in this manual prior to using this tool.

⚠ Use appropriate personal safety equipment when handling, servicing, and operating the rotating drilling assembly.

Read all instructions and warnings carefully, and follow all safety precautions to avoid serious injury or potential damage to property

**DO NOT** inspect or clean swivel while it is attached to the drilling assembly.

### ⚠ WARNING SAFETY SHOES REQUIRED



- Proper Safety Shoes **MUST BE** worn at all times.
- Failure to wear proper safety shoes could result in serious injury or dismemberment!

### ⚠ WARNING HIGH-SPEED ROTATION



- Stay clear of rotating assembly while drilling operation is ongoing.
- **DO NOT** wear loose clothing near drilling operation.

### ⚠ WARNING ELECTRICAL SHOCK HAZARD



- **DO NOT** use this device without gloves.
- Failure to observe this warning could result in severe injury or dismemberment.

### ⚠ WARNING FLYING OBJECTS HAZARD



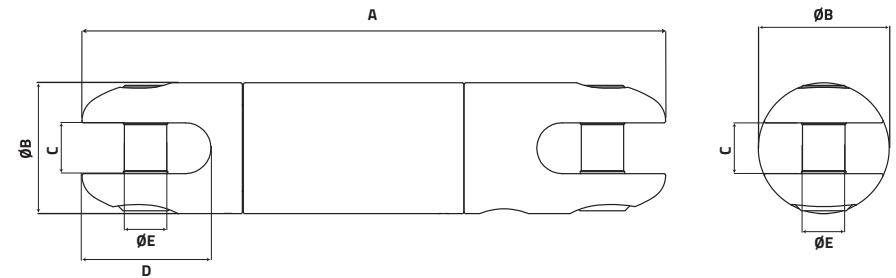
- **DO NOT** operate without eye protection.
- Failure to wear eye protection could result in serious eye injury from flying debris.

## SAFETY INFORMATION & INSPECTION (CONT.)

### INSPECTION

- The directional drilling swivel should be checked before each use for wear and damage, including axial and radial play in the bearings. Worn, defective, or incomplete directional drilling swivels should **NEVER** be used.
- If the directional drilling swivel pins are damaged or worn, they should be replaced **IMMEDIATELY** with Slingco replacement pins for the directional drilling swivel.
- **IF NECESSARY**, lubricate the directional drilling swivel using instructions below.

## SPECIFICATIONS & OPERATION



Part No.	Safe Working Load (3:1)	A	ØB	C	D	ØE
ZSW11133	8,500 lbs (37.8 kN)	184mm 7.24"	Ø41.2 1.62"	16mm 0.63"	40.6mm 1.60"	13.4mm 0.53"
ZSW11134	10,500 lbs (46.7 kN)	211mm 8.31"	Ø50.8 2.00"	19mm 0.75"	45.5mm 1.79"	14.9mm 0.59"

### LUBRICATION

- Locate and clean the grease zerk fitting.
- Using **Valvoline Cobalt Part #872117**, inject grease into zerk fitting slowly while using a hand operated grease gun. Once grease flushes past the seals on the swivels other end, stop pumping, remove grease gun, and wipe excess grease off of the swivel.
- Slingco's directional drilling swivels, with grease zerk fittings, should be cleaned and lubricated after each use. If the swivel is not used for extended periods of time, the swivel should be re-lubricated prior to next use.

# SPECIFICATIONS & OPERATION (CONT.)

## INSTALLATION

- Select the directional drilling swivel size that fits the project specifications.
- Installing the directional drilling swivel with the grease zerk fitting end towards the reams is recommended.
- Connect the swivel between the pulling eye and the reams, and tighten the clevis pins.
- **PRIOR TO USE**, clevis pins **MUST BE** screwed in to their full extent, and torqued to a minimum of 5 Nm (45 in-lb).



**Slingco America, Inc.**  
130 Celtic Blvd, Tyrone,  
Georgia, 30290, USA  
TOLL FREE: 888 685 9478  
sales@slingcoamerica.com

**888-685-9478**

**Slingco Limited**  
Gateway Business Park,  
New Hall Hey Road,  
Rawtenstall, BB4 6JG, England  
Tel: +44 [0]1706 855558  
sales@slingco.com

**+44 [0]1706 855558**

**Slingco Australia Pty. Ltd.**  
L9, 1 York Street, Sydney,  
NSW 2000, Australia  
Sales: +61 3 8840 6556  
sales@slingcoaustralia.com.au

**+61 3 8840 6556**

---

**slingco.com**

Directional Drilling Swivel Maintenance Manual MAN13552 - Rve 001 Date March2024

Slingco makes no warranty, express or implied, with respect to this product nor with respect to its specifications. In no event shall Slingco be liable for any direct, indirect, punitive, incidental, special consequential damages to property or life, whatsoever, arising out of or connected with the use or misuse of this product. This product is intended for use by qualified professionals having adequate knowledge of its proper use. *March2024 - v1.0*